



THE PIONEER VILLAGE AND CAMP NAUMKEAG:
CONSULTATION WITH SALEM'S HISTORIC COMMISSION

JUNE 2, 2021

PRESENTATION AGENDA

- Proposed Project
- Project Goals
- Project Team
- History of the Pioneer Village
- History of Camp Naumkeag and Fort Lee
- Condition of the Sites and Structures
- Site design proposal
- Proposed documentation and incorporation of Camp Naumkeag history
- Proposed project schedule

PROPOSED PROJECT

The proposed project is to relocate the Pioneer Village to the site of the current Camp Naumkeag. Key reasons include:

- The current site of the Pioneer Village is in a coastal flood plain, making the site vulnerable to current storm surges and future sea level rise. The Camp Naumkeag site is higher and comparatively well protected.
- The current site is located within a residential neighborhood, and not easily “discoverable” by visitors to Salem. The Camp Naumkeag site is on the trolley line, adjacent to the Willows and in a location which can also orient and introduce visitors to Fort Lee.

PROJECT GOALS

- Relocate the buildings of Pioneer Village to a more environmentally sustainable location
- Expand the vision at the future site to include both Indigenous and Colonial cultures while preserving some of the elements of the original mission
- Increase the financial sustainability of this new site by making it more visible and accessible

The project will extend the mission of historic preservation and culture by creating a public locus for Salem history in a highly visible and public location which allows for future connections to and an orientation point for Fort Lee.

PROJECT TEAM

- Jenna Ide, Director of Capital Projects & Municipal Operations, City of Salem
- Tricia O'Brien, Superintendent, City of Salem, Park, Recreation and Community Service
- Elizabeth Peterson, Executive Director, Pioneer Village Museum
- Oudens Ello, Architects and Design Team Lead. Team includes:
 - The Public Archaeology Lab, Ginny Adams and Gretchen Pineo
 - ObjectIDEA, Matt Kirchman (Interpretive Design)
 - Stimson Landscape Architecture, Glen Valentine
 - Nitsch Engineering (Civil Engineer)
 - Structures North, John Wathne (Structural Engineer)
 - Massachusetts Tribe, Elizabeth Solomon
- Margaret Wood, Anser Advisory, Consulting Project Manager

HISTORY OF THE PIONEER VILLAGE

The Pioneer Village was the brainchild of American antiquarian George Francis Dow (1868-1936). It was created in the 1930s as the set for a play. Audience members watched a re-enactment of the June 1630 arrival of John Winthrop and the families of Thomas Dudley and Simon Bradstreet in Dow's reimagined Salem of that era. A replica of the Arbella, the flagship of the Winthrop Fleet, was also built at this time. The set was meant to be temporary, but it was preserved by the City of Salem. It was repurposed as the Salem Pioneer Village, one of the first living history museums in the US. The existing Pioneer Village consists of four historic and three non-historic buildings along with related historic (dugout and English wigwam) and non-historic structures.

A Massachusetts Historic Commission (SAL.GM) form was completed by 1988 by a consultant for the Salem Planning Department.



HISTORY OF THE PIONEER VILLAGE



SIGNIFICANCE OF THE PIONEER VILLAGE

The Pioneer Village is significant for four reasons:

- **Indigenous history.** The Pioneer Village offers a unique opportunity to educate and raise awareness about the indigenous people of the area.
- **Colonial history.** The Pioneer Village commemorates and recognizes the arrival of Governor Winthrop, which ensured the success of the Massachusetts Bay Colony through the continuous successful occupation of the future site of Salem.
- **Museum history.** The Pioneer Village is one of America's first living history museums and created a concept for interpretive museums which has been widely adopted. Pioneer Village is further significant as an early example of a 17th century reconstruction using period-correct building technology.
- **Environmental history.** The Pioneer Village is uniquely positioned to expand the understanding and discuss the environmental and cultural impacts of the meeting of native and immigrant cultures.

HISTORY OF CAMP NAUMKEAG

Camp Naumkeag began as a tuberculosis health day camp in 1910. The camp's original buildings were destroyed by a thunderstorm in 1930, and the existing structures were built in 1932. It was operated for 10 years as the Salem Health Camp and subsequently by several organizations as a day camp. The City of Salem acquired the property in 2002. In recent years the YMCA operated a day camp on the site: this program has now been relocated to Forest River Park. Several buildings which were originally on the site have been removed, including a cottage and a small office building. The existing buildings are summarized in the Massachusetts Historic database (Inventory No. SAL.IN) as:



Camp Naumkeag
Data Sheet

Map #	MHC #	Resource/Historic Name	Date
1	3886	The Cottage	by 1932
2	3887	Men's Cabin	by 1932
3	3888	The Lodge	by 1932
4	3889	Women's Cabin	by 1932

FORT LEE

The proposed relocation of the Pioneer Village to the Camp Naumkeag site provides an opportunity to create an orientation point for Fort Lee, which is located on the wooded knoll overlooking the site.

Fort Lee is one of the few Revolutionary War earthwork forts in Massachusetts that has survived relatively intact: it is a tremendous but largely hidden historic resource in Salem.



AERIAL MAP



CONDITION OF THE SITES AND STRUCTURES

In 2018, the City completed assessments of Camp Naumkeag and the Pioneer Village sites and structures. These assessments included estimates to repair the Naumkeag structures: the cost was estimated at +/- \$830,000 to bring them into compliance with current codes. Key issues noted included:

- Compliance with the structural code
- Compliance with energy code
- Compliance with access code

In October 2020, The Public Archaeology Lab, Inc. (PAL) completed an archaeological survey of the Naumkeag site. No potentially archaeological resources were identified during the survey. This survey was subsequently shared with MHC and confirmation of this conclusion was received 12/4/2020.

DOCUMENTATION & RESTORATION

The City of Salem recognizes the important history represented by Camp Naumkeag and the Pioneer Village. The National Register of Historic Places Eligibility of Pioneer Village and Camp Naumkeag will be clarified with the Salem Historical Commission and the Massachusetts Historical Commission.

Pioneer Village was surveyed in 1989, 37 years ago, and found to be ineligible due to lack of integrity, which was repeated in 2018, but with no new or updated information. Based on additional current research and the 1960s reconstructions now being considered historic, its significance and eligibility warrants re-evaluation.

Camp Naumkeag was surveyed in 1998, 23 years ago, and was not recommended eligible for the National Register; however, no definitive statement of ineligibility was included.

The City intends to complete a State Archival Documentation with photographs, narrative and historical images of Pioneer Village and Camp Naumkeag, prior to any changes at either site. Copies of the documentation will be filed in the City and at the State Archives.

The Project Team is considering options for the Pioneer Village relocation to incorporate buildings and a site setting that is comparable to the 17th century interpretive layout of the original 1930 design. Three on-story and one two-story buildings will be relocated from Pioneer Village to Camp Naumkeag and restored. The work will be done by a mover and a timber framer experienced in moving and restoring historic buildings.

QUESTIONS?

SITE DESIGN PROPOSAL

Oudens Ello Visitor's Center

Conservation: Ginny Adams

ObjectIDEA: Interpretive Approach

Stimson: Site Design Approach



Matthew Oudens, AIA, LEED AP, MCPPO - Principal-in-Charge
Oudens Ello Architecture
Architecture / Prime Consultant



Chris Genter, AIA, LEED AP - Project Manager
Oudens Ello Architecture
Architecture / Prime Consultant



Virginia Adams - Senior Architectural Historian
The Public Archaeology Laboratory
Architectural History / Regulatory Requirements



Matt Kirchman - Principal-in-Charge
ObjectIDEA
Visitor Experience / Interpretive Exhibitions

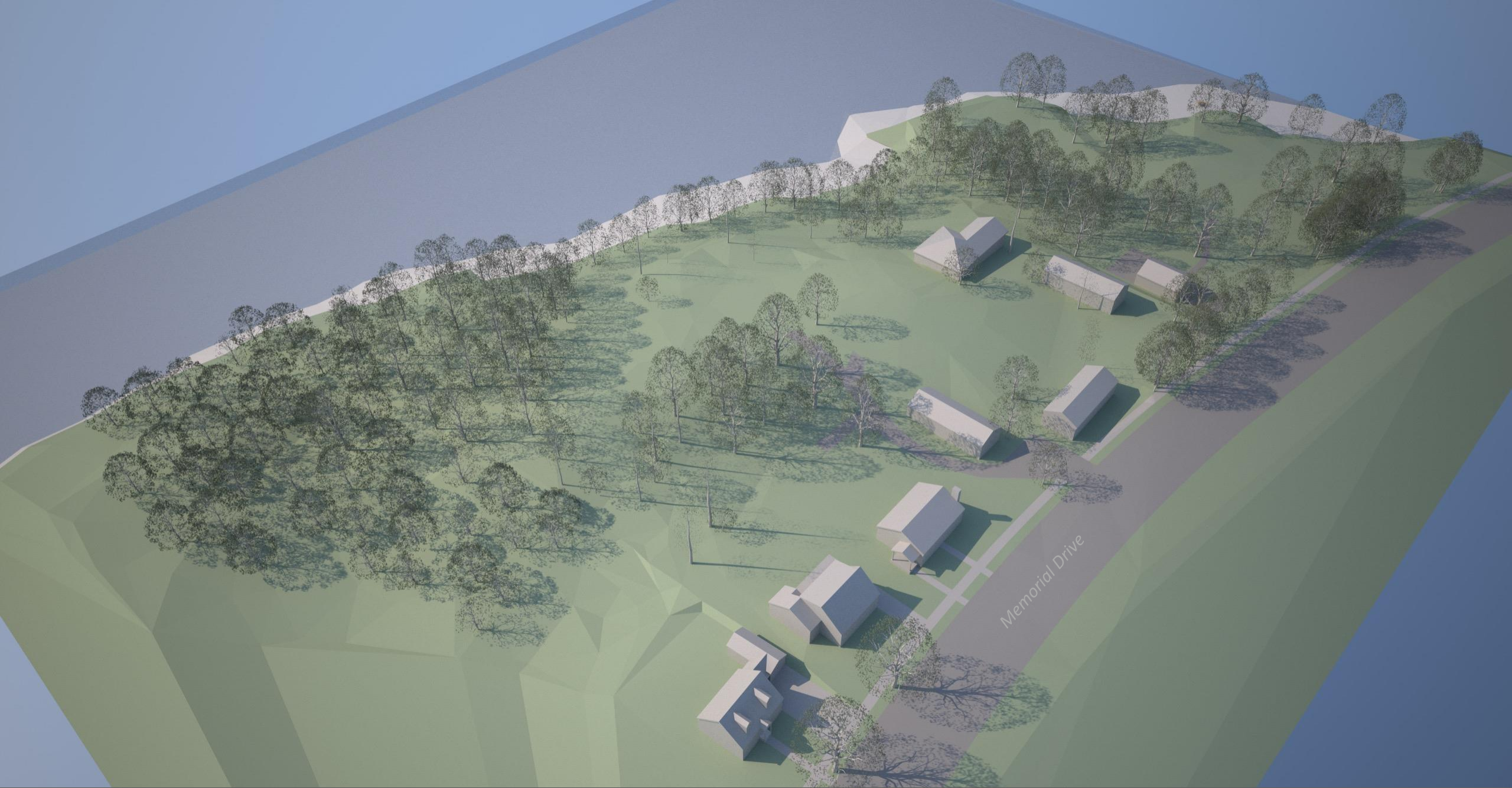


Glen Valentine - Principal-in-Charge
STIMSON
Landscape Architecture

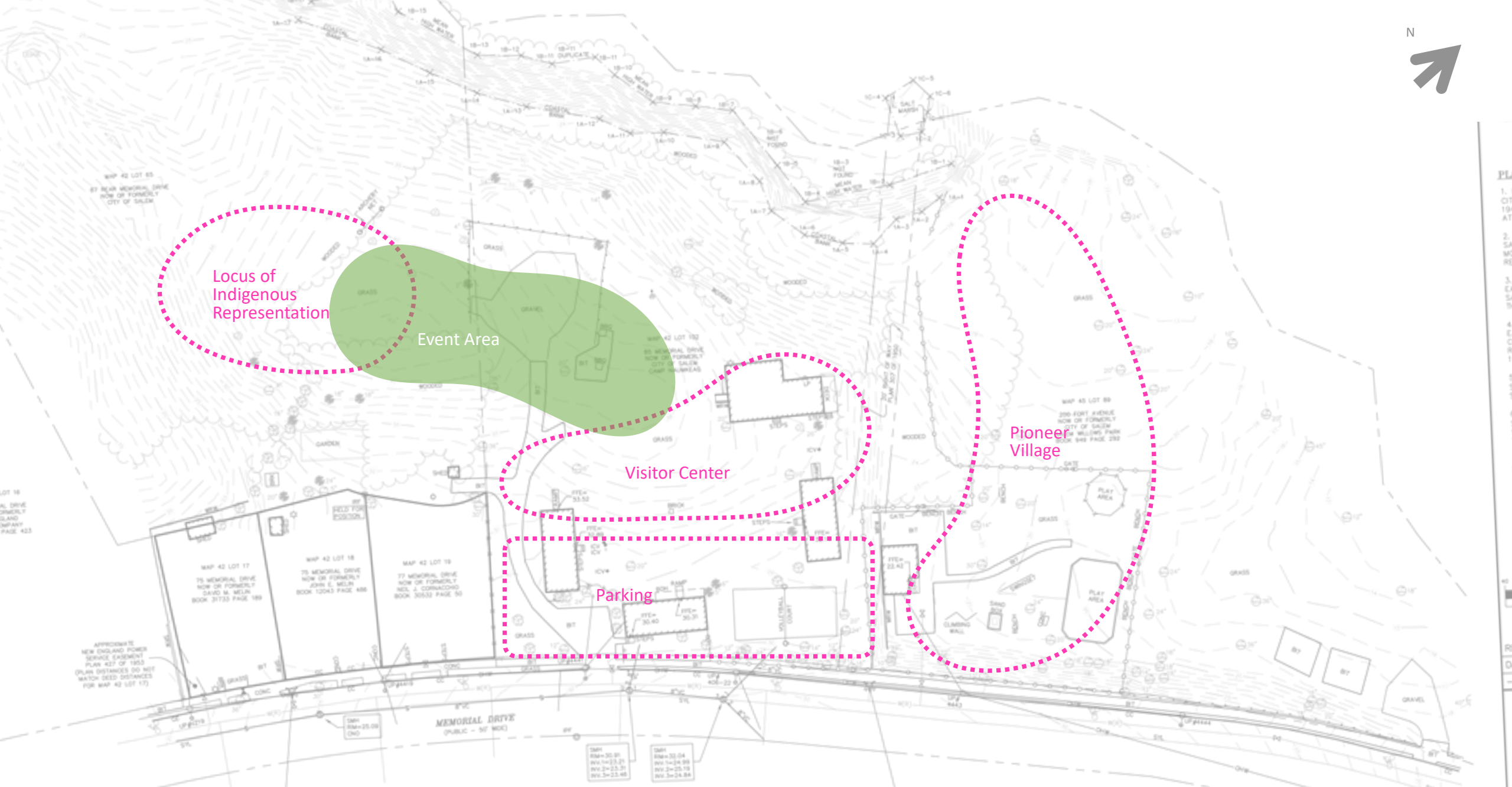
SITE DESIGN PROPOSAL



SURVEY SHOWING TOPOGRAPHY AND EXISTING BUILDINGS

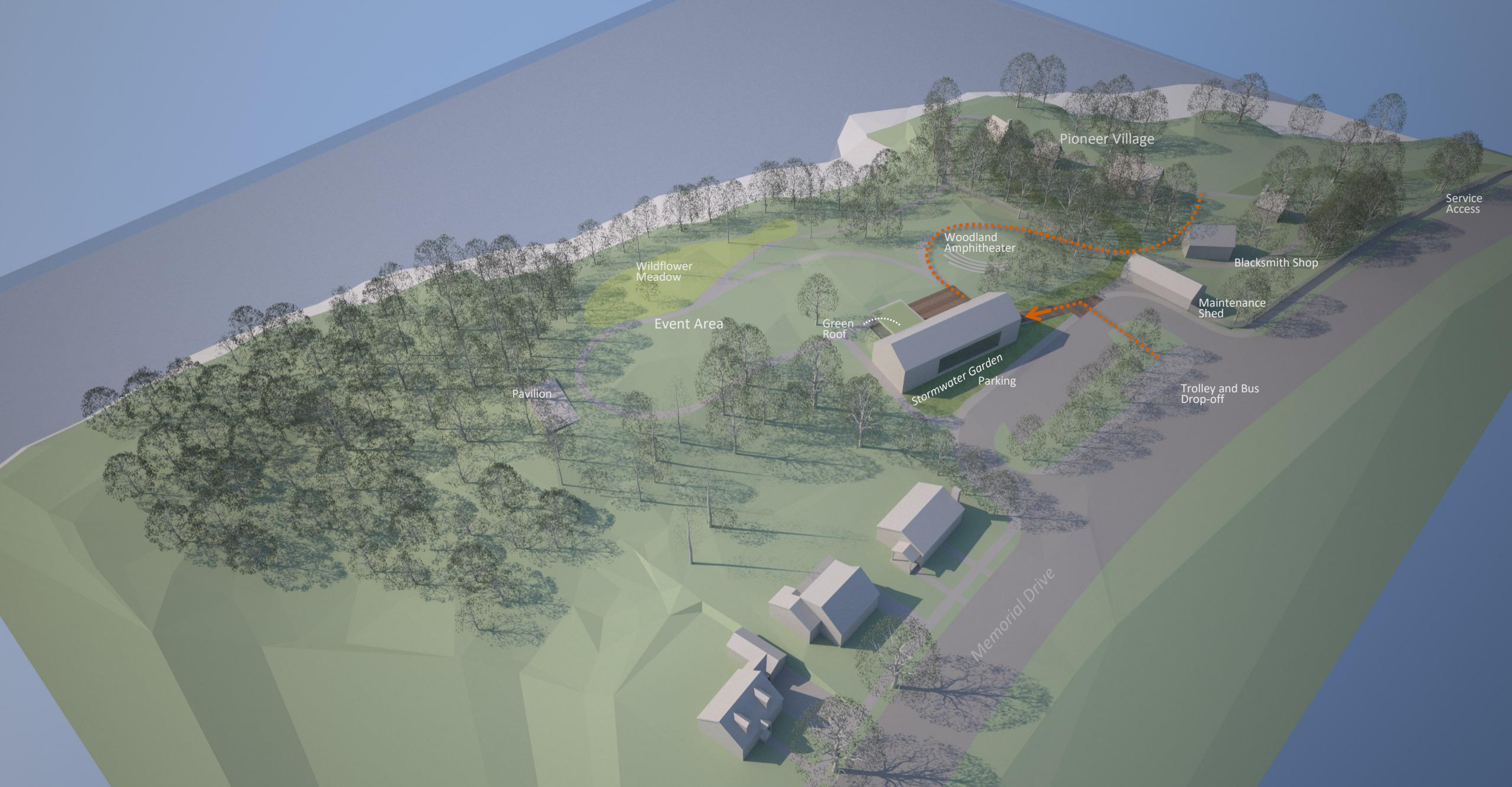


EXISTING SITE FROM EAST



SITE PLAN DIAGRAM





Pioneer Village

Service Access

Blacksmith Shop

Maintenance Shed

Trolley and Bus Drop-off

Memorial Drive

Woodland Amphitheater

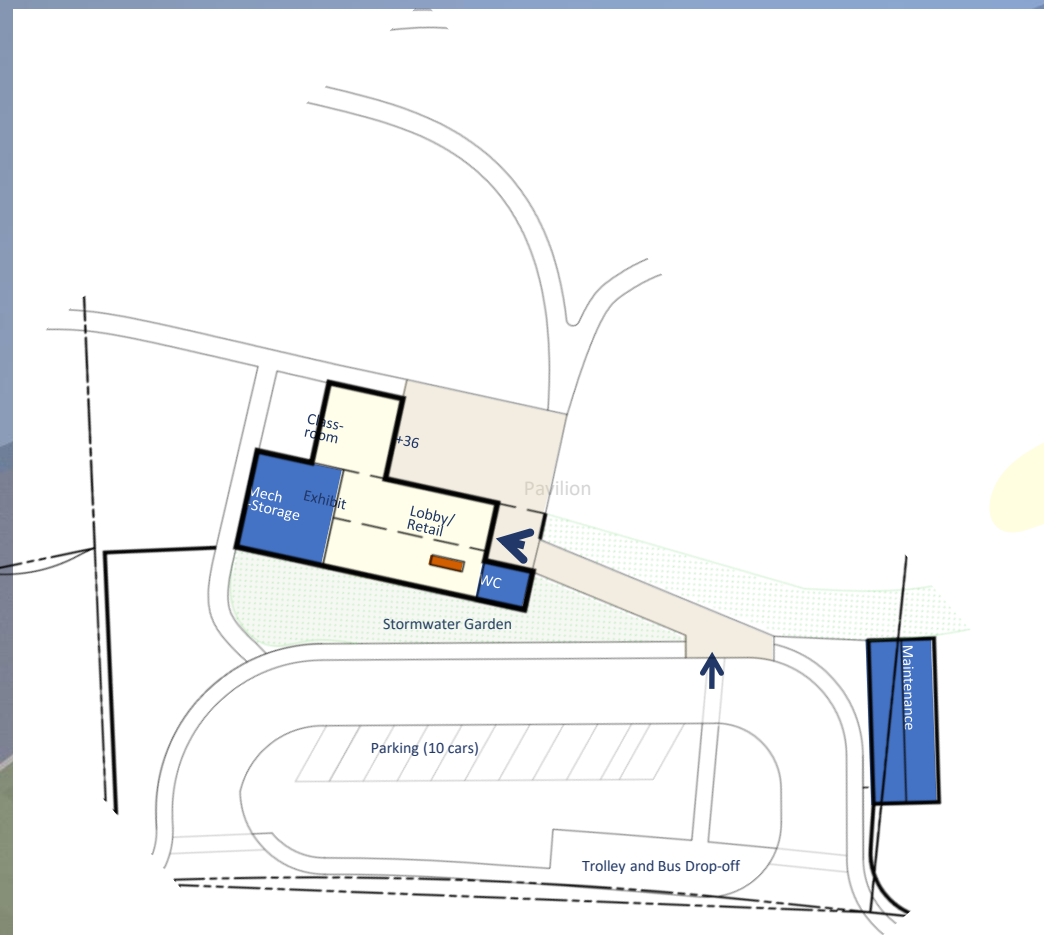
Green Roof

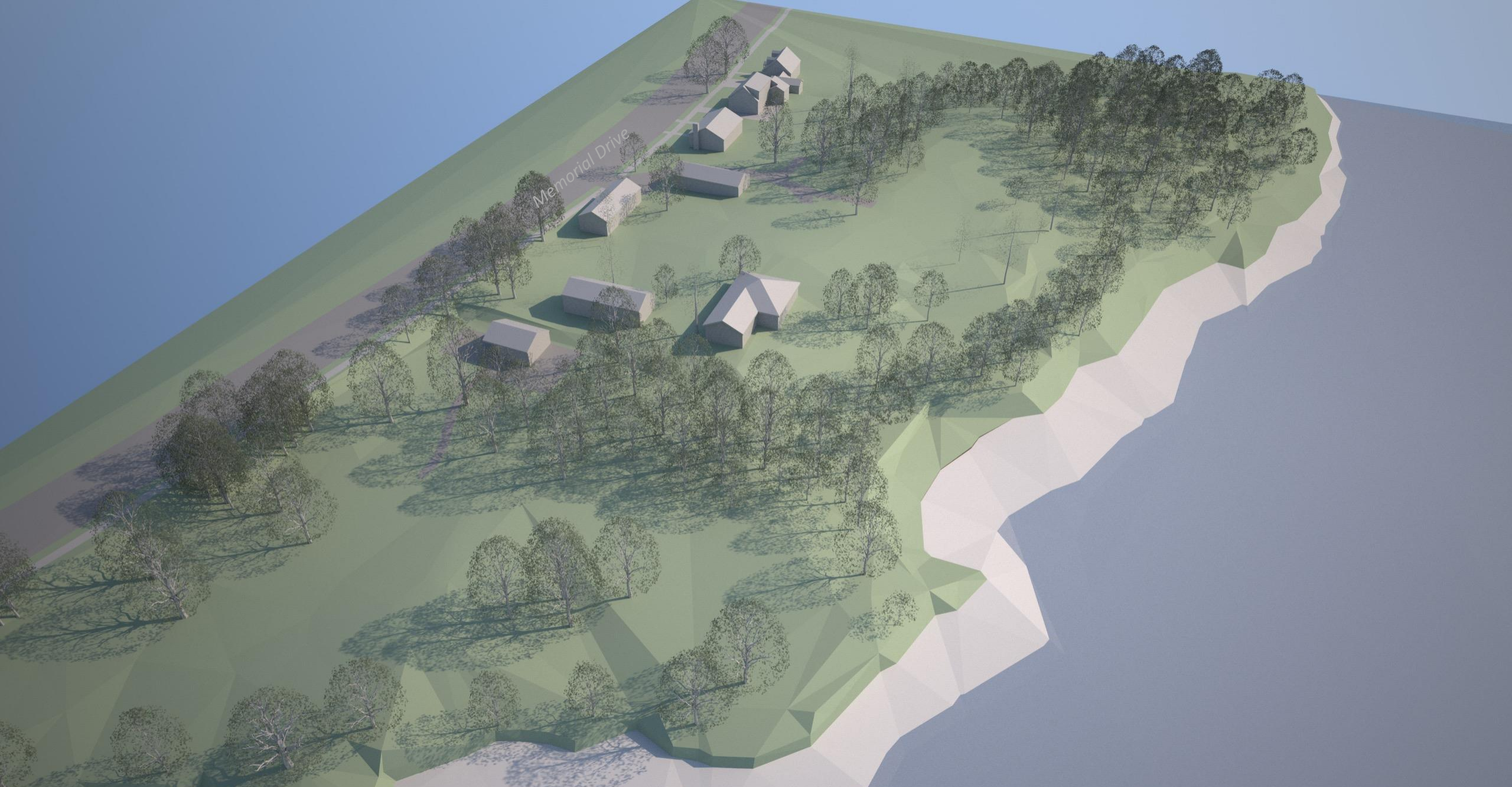
Stormwater Garden
Parking

Event Area

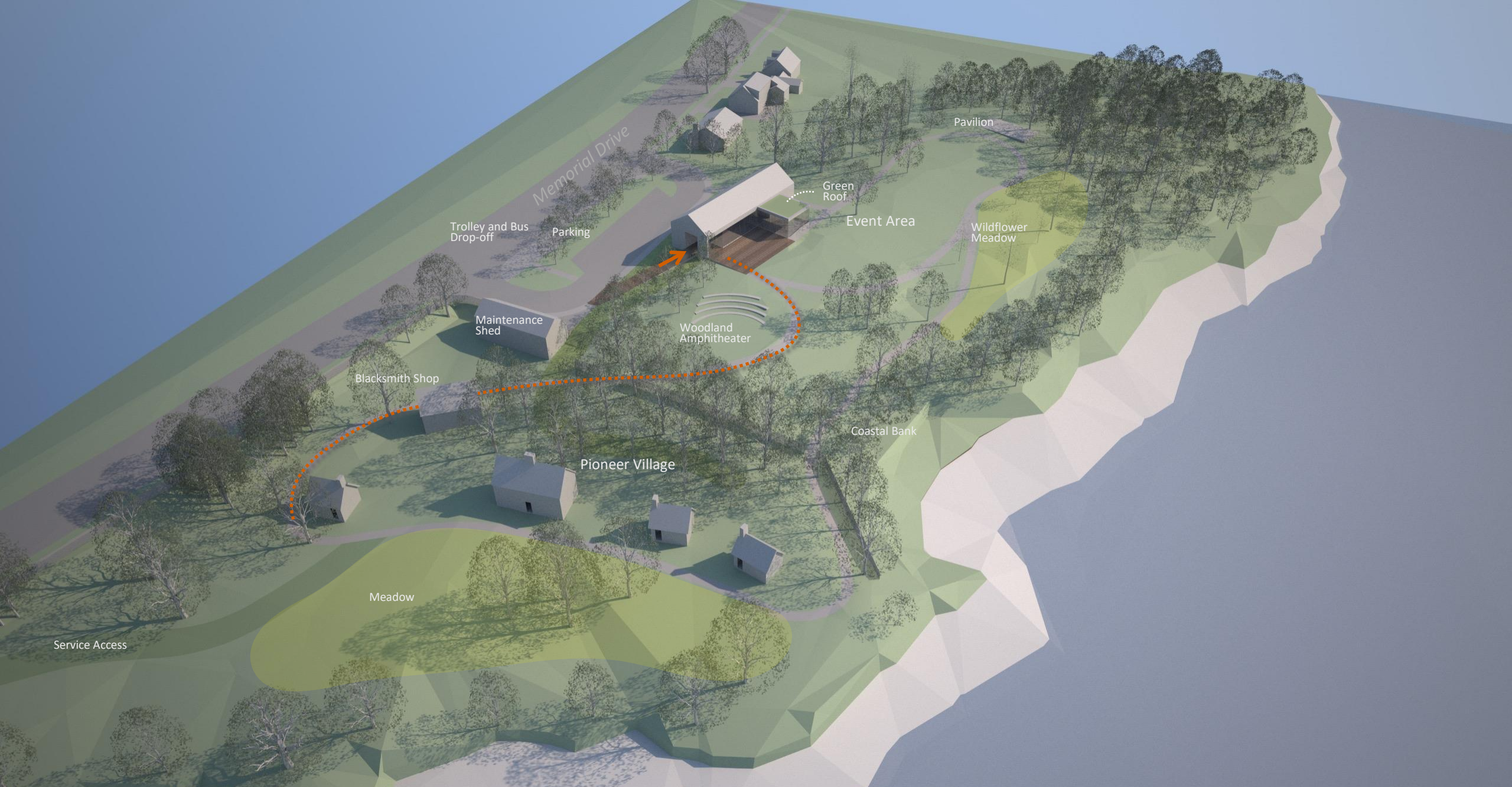
Wildflower Meadow

Pavilion

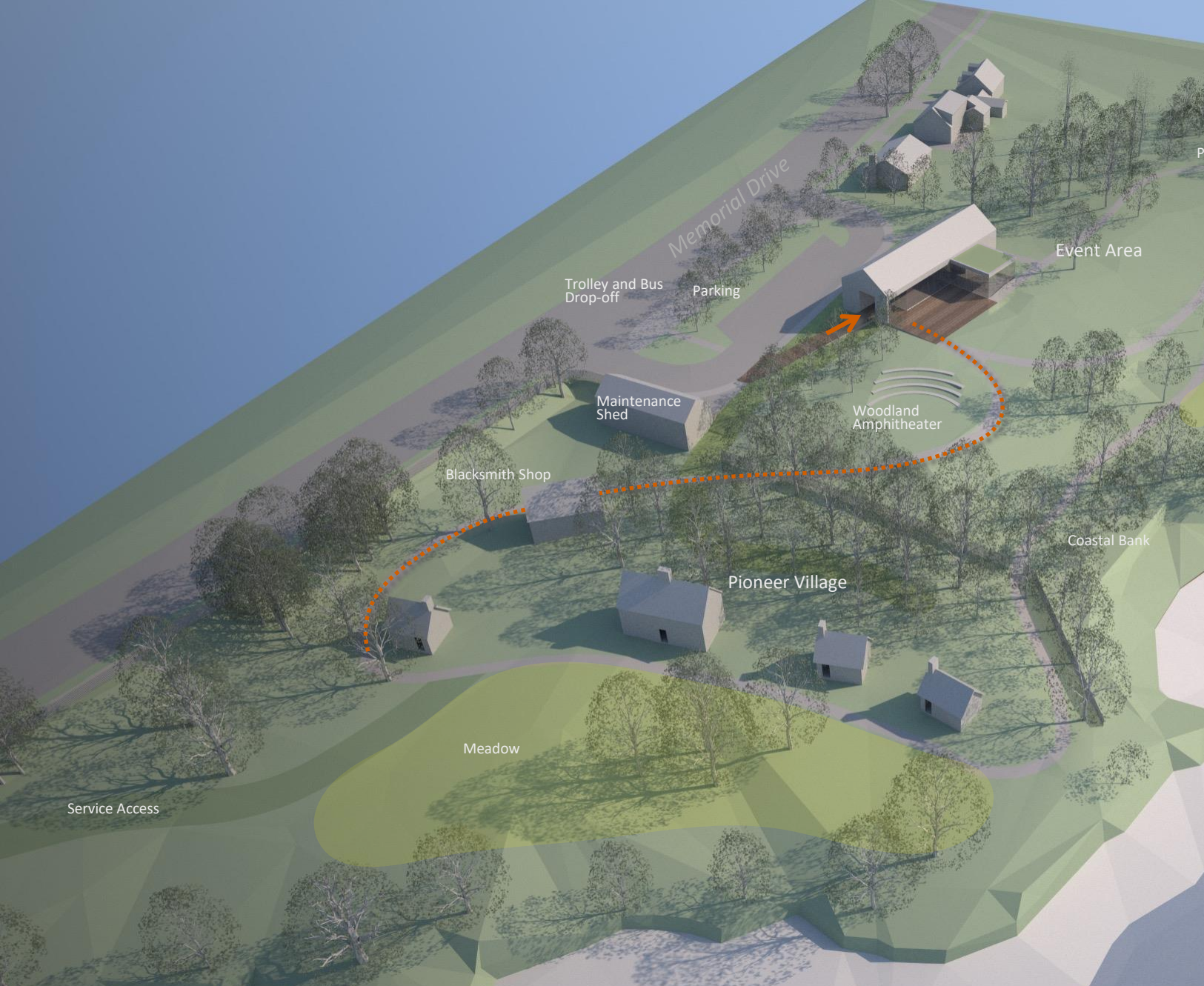




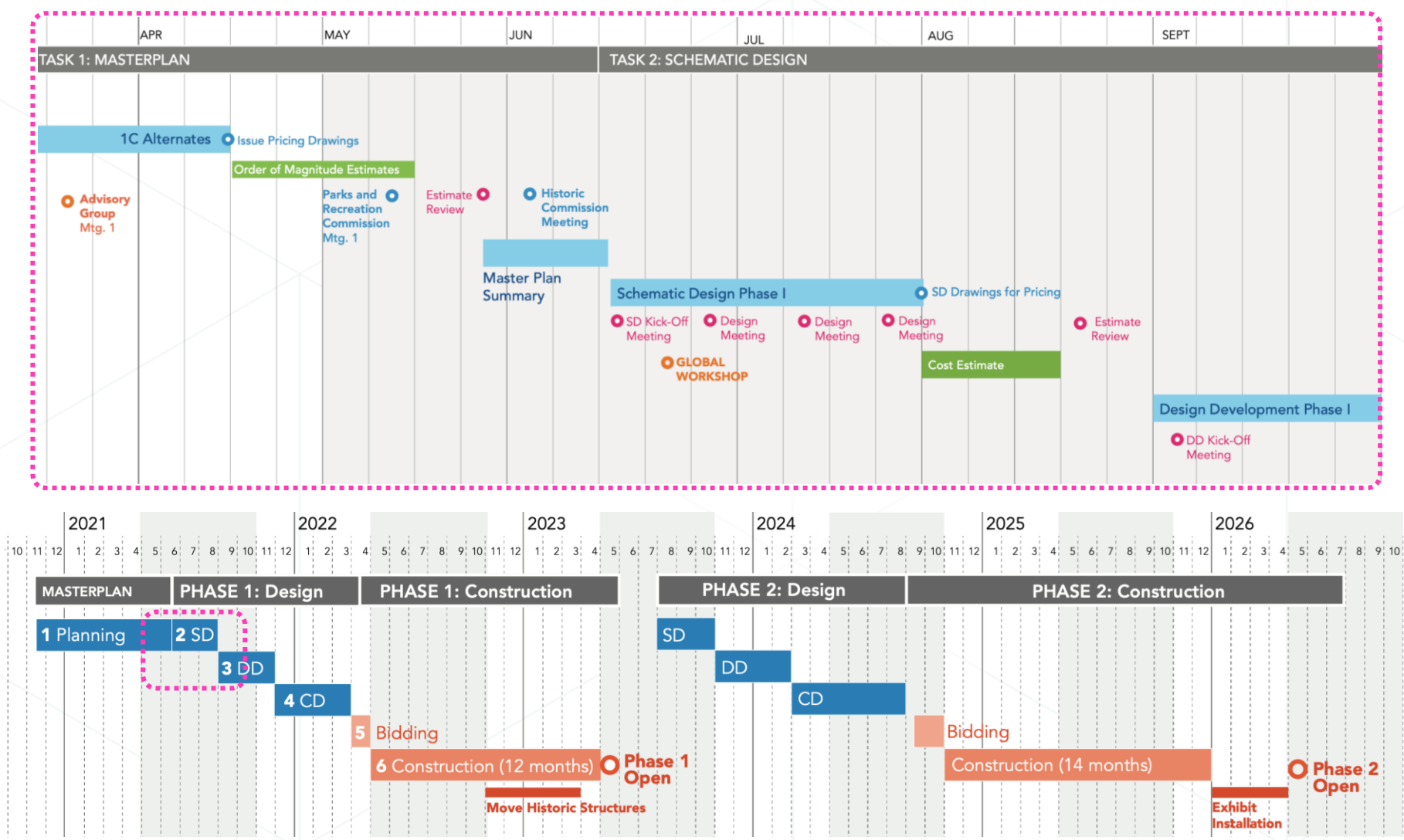
EXISTING SITE FROM WEST



VISITOR CENTER OPTION



PROJECT SCHEDULE



LOCAL CONCERNS WE'VE HEARD

Prior to this presentation, we met with Camp Naumkeag's close abutters as well as members of the project's Advisory Committee. Some concerns the project will need to address in its development include:

- Parking
- Security
- Location for school bus waiting

The project is at an early stage of development and these issues and others we hear will be addressed as part of the development of the design.

QUESTIONS?
