





- Option A:**
- Move Men's Cabin southeast
 - Well positioned for flexible program use.
 - Visible from street.
 - Views to water through trees
 - Close to Pioneer Village buildings; requires robust landscape screening

2.1 - Camp Naumkeag Building Preservation: Option A for Relocation of One Cabin



Option B:

- Rework parking layout and preserve lodge in existing location
- Visible from street
- Difficult to access from rest of site and not well positioned for flexible program use.



- Option C:
- Move Women's Cabin southeast and resort parking lot access road
 - Visible from street
 - Difficult to access from rest of site and not well positioned for flexible program use.

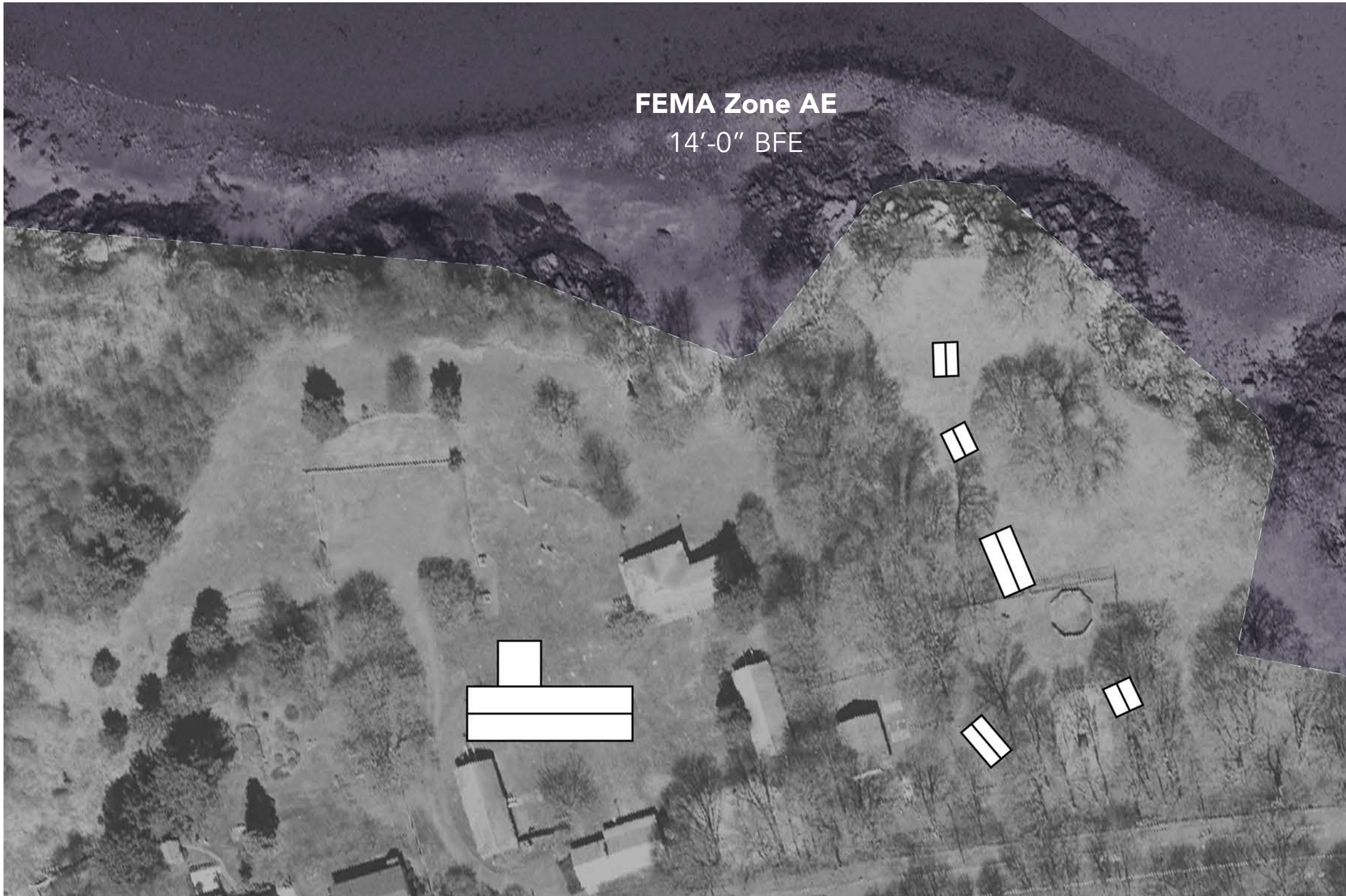




Forest River Park (Existing)

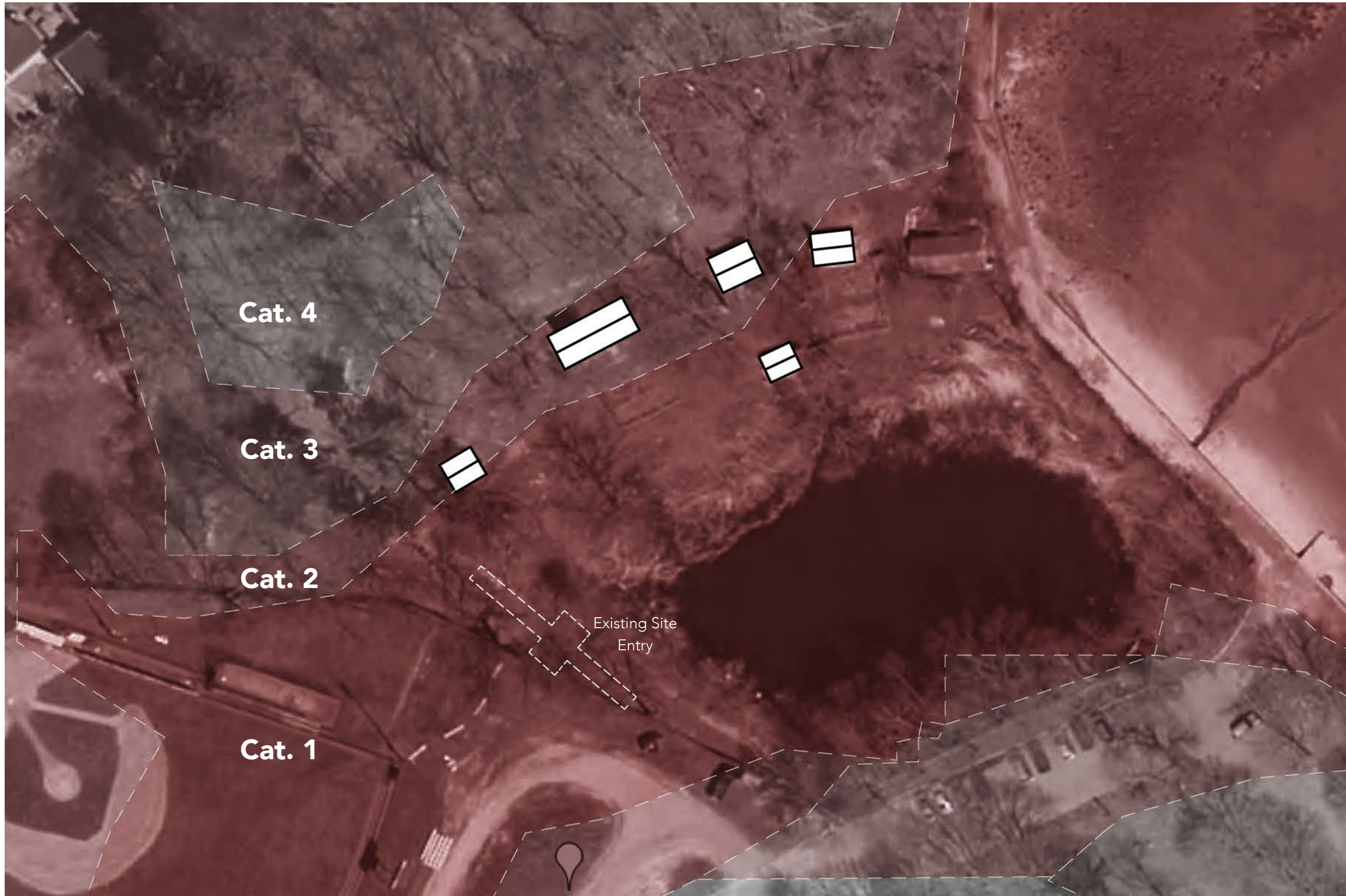


Proposed Site

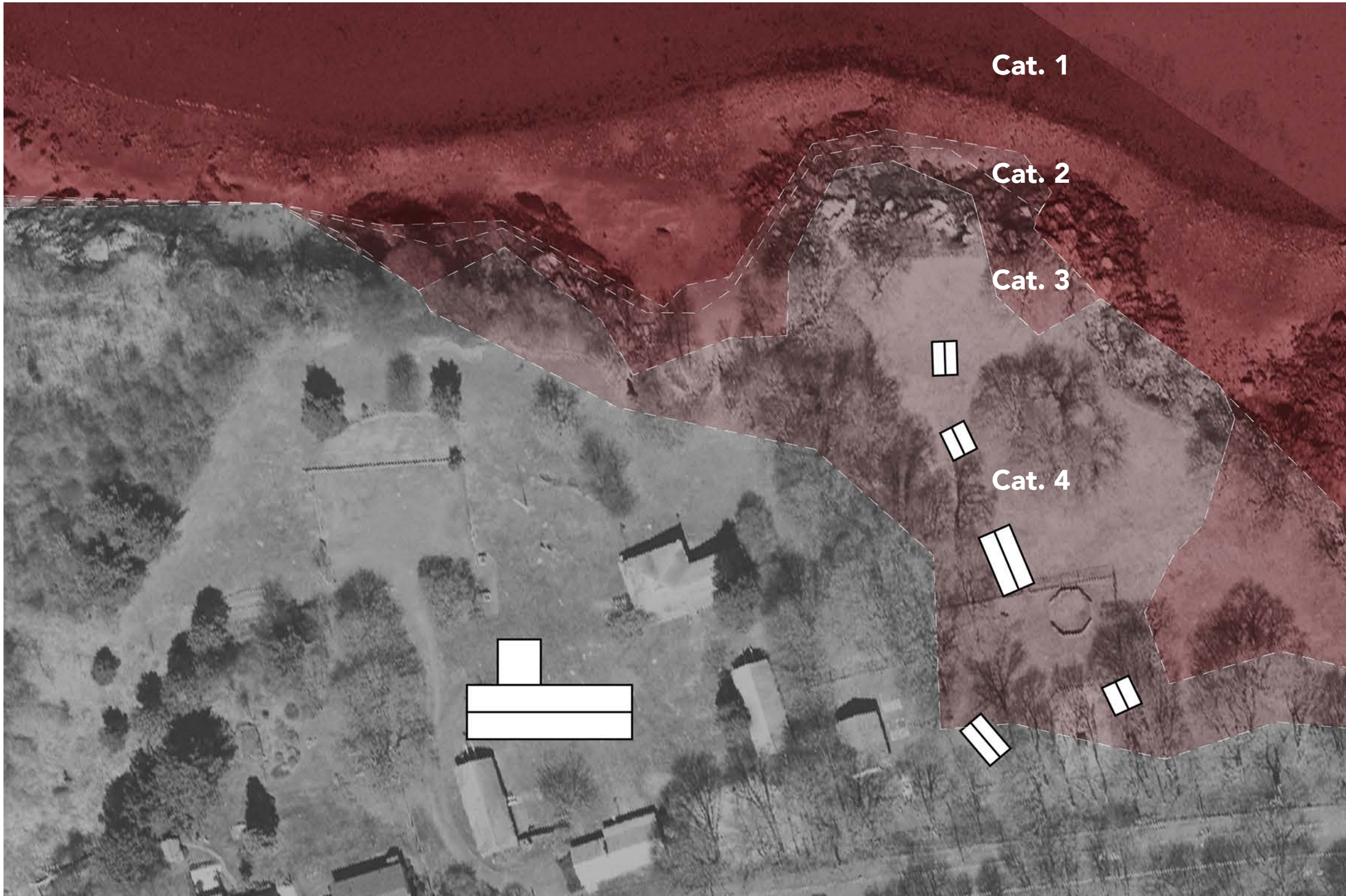


* Data from Massachusetts Office of Coastal Zone Management's
Massachusetts Sea Level Rise and Coastal Flooding Viewer

Forest River Park (Existing)

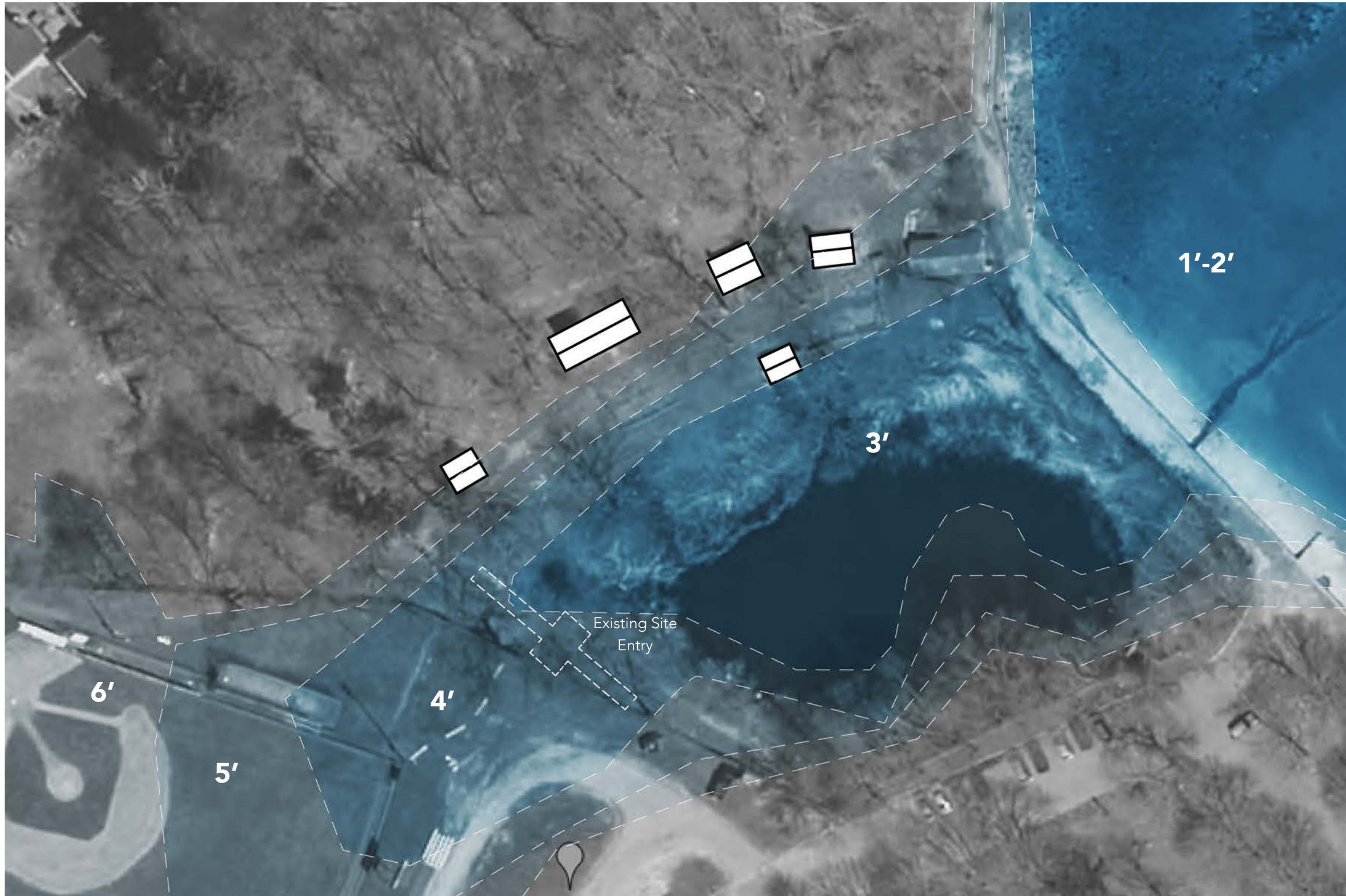


Proposed Site

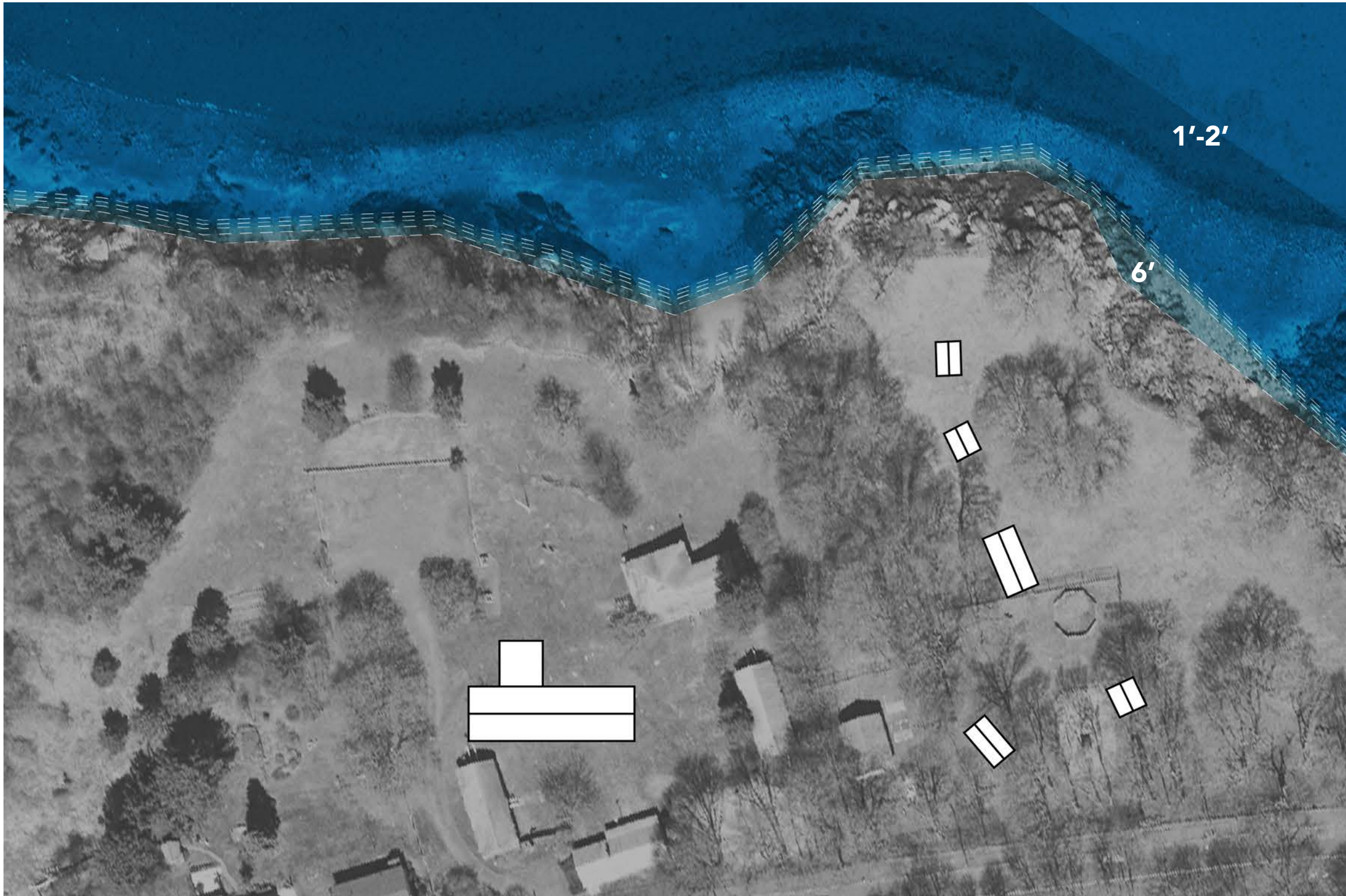


* Data from Massachusetts Office of Coastal Zone Management's
Massachusetts Sea Level Rise and Coastal Flooding Viewer

Forest River Park (Existing)



Proposed Site



* Data from Massachusetts Office of Coastal Zone Management's
Massachusetts Sea Level Rise and Coastal Flooding Viewer

KEY

- Existing Paths
- New/Improved Paths
- Parking Lots
- Proposed Directional/Interpretive Signage
- Proposed Crosswalks

