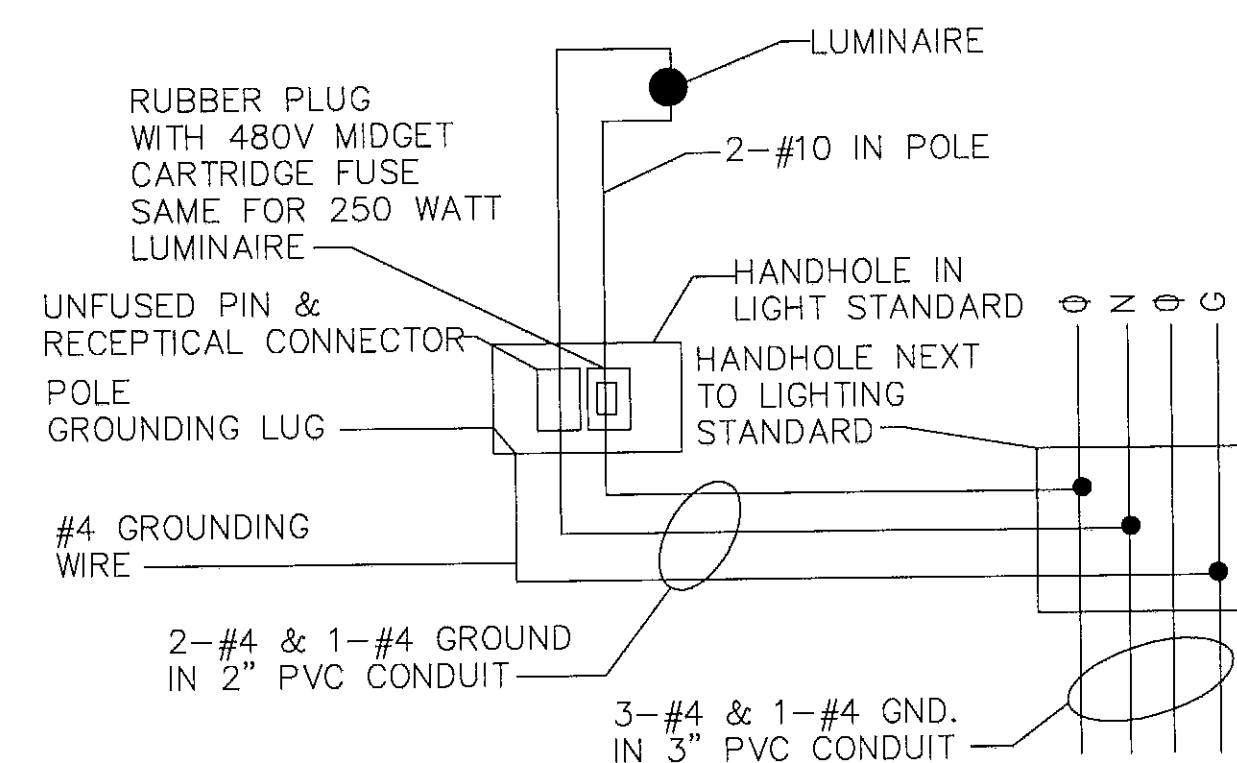
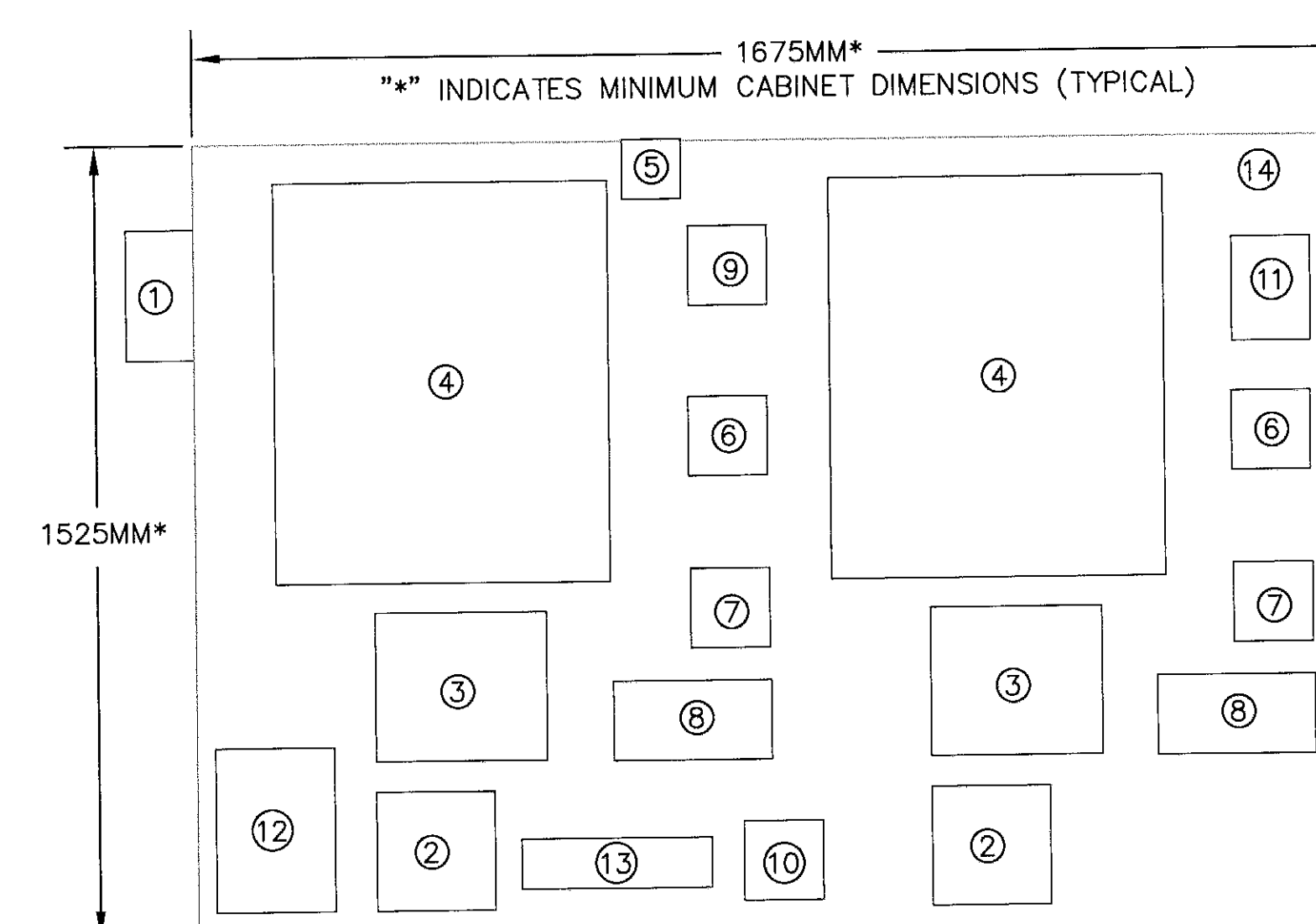


[illegible]

A cross-sectional diagram of a fuse holder assembly. The assembly consists of a central cylindrical component labeled "FUSE CRIMP CONNECTOR" which is inserted into a "RUBBER HOUSING". The housing has two openings on either side, each containing a "FUSE HOLDER FITTING". Two "#4 AWG WIRE" leads extend from the fittings through the housing. The entire assembly is shown in a symmetrical, cross-sectional view.

BASE HALF SECTION

E TYPICAL LIGHT POLE - CITY STANDARD  
SINGLE LUMINAIRE  
(STA. 237+70 TO STA. 276+10)  
NOT TO SCALE



- ① UTILITY METER
- ② 225AF/200AT/2P—240V CIRCUIT BREAKER
- ③ MECHANICALLY HELD LIGHTING CONTACTOR 100A—2P—240V
- ④ MAIN LUGS ONLY 225A DISTRIBUTION PANEL
- ⑤ PHOTOCELL
- ⑥ AUXILIARY CONTROL RELAY
- ⑦ HAND—OFF—AUTO OVERRIDE SWITCH
- ⑧ 20AF/20AT—1P 120 VOLT CIRCUIT BREAKER
- ⑨ 100 WATT INCANDESCENT LAMP SOCKET AND SWITCH
- ⑩ 20A GFI RECEPTACLE
- ⑪ 24hr/365day, ASTRONOMICAL TIME CLOCK
- ⑫ 225AF/200AT/2P—240V SERVICE ENTRANCE RATED CIRCUIT BREAKER
- ⑬ 500W/120V, 1 $\phi$  HEATER KIT WITH STRIP HEATER, GUARDS & THERMOSTAT.
- ⑭ NEMA 3R ENCLOSURE, 2 DOOR (1 LOUVERED), PAD—LOCKABLE.

(NOTE: FIELD VERIFY ARRANGEMENT OF COMPONENTS WITHIN CABINET)