

100% CONSTRUCTION DRAWINGS FOR

BLOCKSIDE FIELD - Synthetic Turf

Swampscott, Massachusetts

January 15, 2017

OWNER:
Town of Swampscott
1 Monument Avenue
Swampscott, Massachusetts 01907



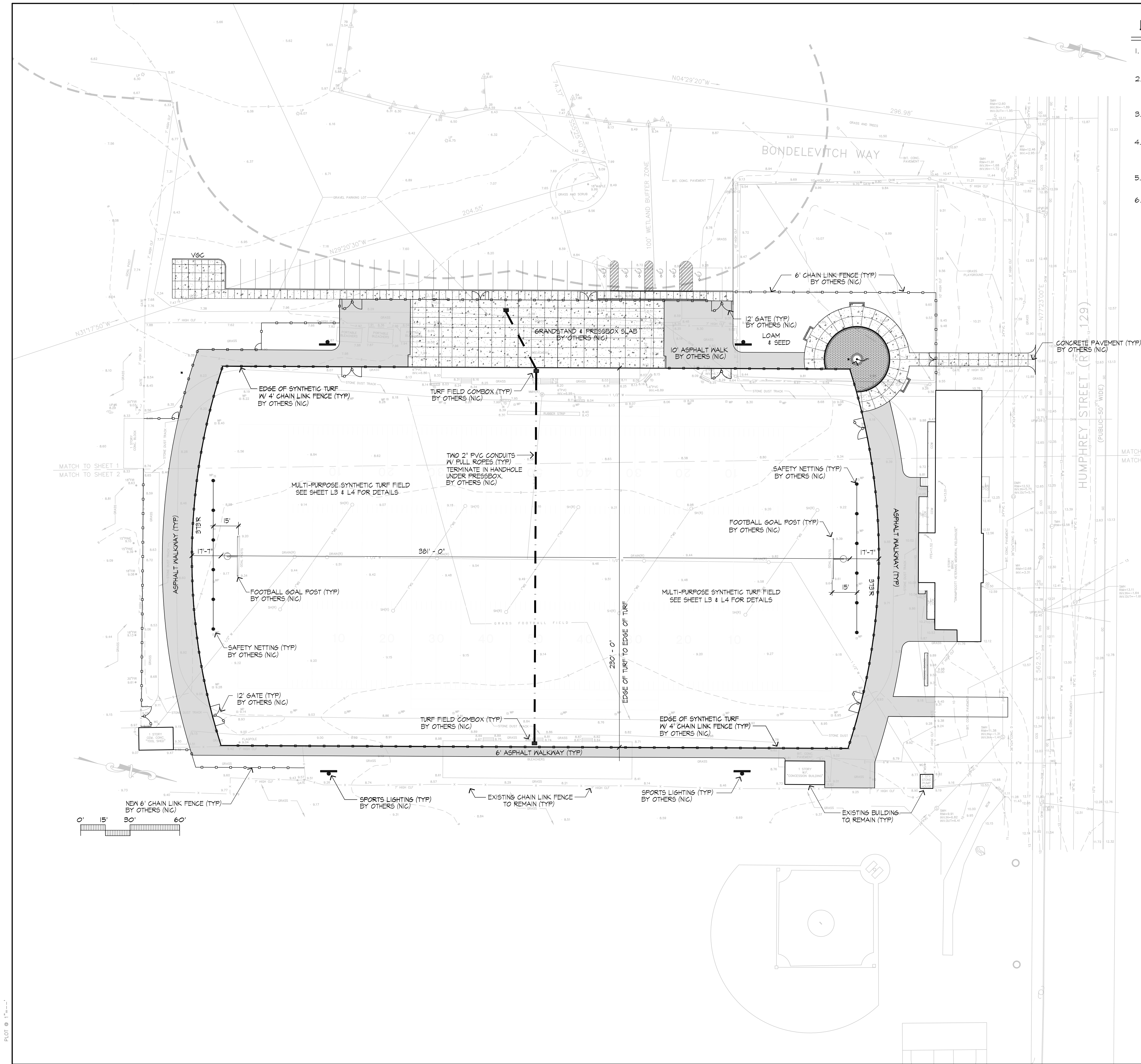
LIST OF DRAWINGS:

- L-1 LAYOUT & MATERIALS PLAN
- L-2 GRADING & DRAINAGE PLAN
- L-3 ATHLETIC FIELD DETAILS
- L-4 ATHLETIC FIELD DETAILS



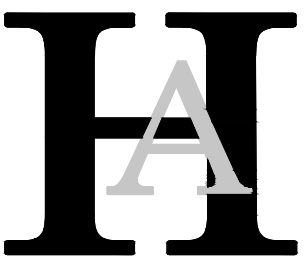
LANDSCAPE ARCHITECT:
Huntress Associates, Inc.
17 Tewksbury Street
Andover, Massachusetts 01810
978.470.8882





LAYOUT AND MATERIAL NOTES

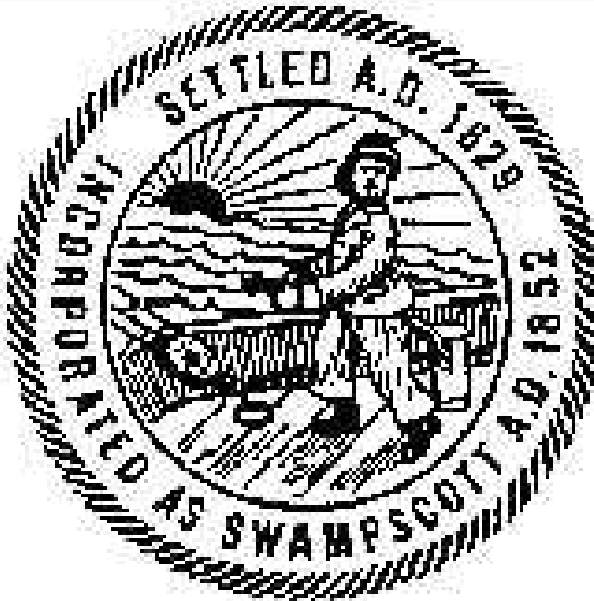
1. TOPOGRAPHIC PLAN OF LAND IN SWAMPSCOTT, MASSACHUSETTS, PREPARED BY MERRIMACK ENGINEERING OF ANDOVER, MASS. DATED JULY 25, 2016
2. SITE IMPROVEMENTS OTHER THAN THE SYNTHETIC TURF SYSTEM, TO BE PROVIDED BY OTHERS AND ARE SHOWN HERE FOR REFERENCE ONLY. SYNTHETIC TURF SYSTEM TO INCLUDE THE TURF, INFILL AND RESILIENT PAD, AS PER THE PLANS AND SPECS.
3. CONTRACTOR(S) SHALL THOROUGHLY FAMILIARIZE THEMSELVES WITH ALL CONSTRUCTION DOCUMENTS, SPECIFICATIONS, AND SITE CONDITIONS PRIOR TO BIDDING AND PRIOR TO CONSTRUCTION.
4. ANY DISCREPANCIES BETWEEN DRAWINGS, SPECIFICATIONS, AND SITE CONDITIONS SHALL BE REPORTED IMMEDIATELY TO THE LANDSCAPE ARCHITECT FOR CLARIFICATION AND RESOLUTION PRIOR TO BIDDING OR CONSTRUCTION.
5. ALL DIMENSIONS ARE TAKEN TO THE FIELD CENTERLINE, EXCEPT WHERE OTHERWISE NOTED.
6. SCREENED IMAGES SHOW EXISTING CONDITIONS. WHERE EXISTING CONDITIONS LIE UNDER OR ARE IMPINGED UPON BY PROPOSED BUILDINGS AND/OR SITE ELEMENTS, THE EXISTING CONDITION WILL BE REMOVED, ABANDONED AND/OR GAPPED OR DEMOLISHED AS REQUIRED.



Huntress Associates, Inc.

Landscape Architecture & Land Planning

17 Tewksbury Street
Andover, Massachusetts 01810
978 470 8882 FAX 978 470 8890



Project:

BLOCKSIDGE FIELD
Synthetic Turf

Swampscott, Massachusetts

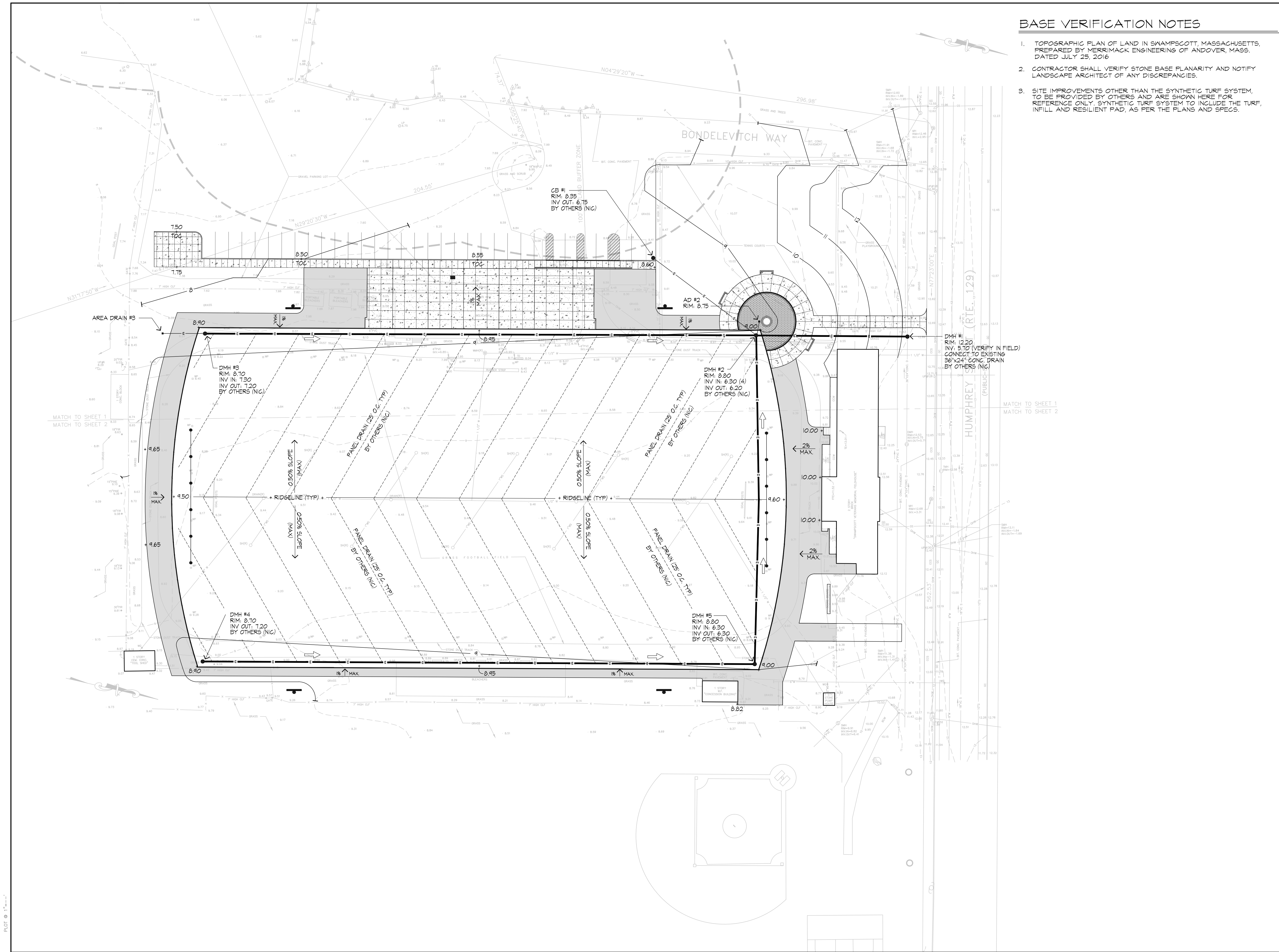
Drawing Title:

Layout & Materials
Plan



Revision Date

Scale: 1" = 30'
Date: 11/5/17
Job: 00-107
File: PR-det
Drawn: CCH
Checked: --
Drawing No. L-1
of 4



BASE VERIFICATION NOTES

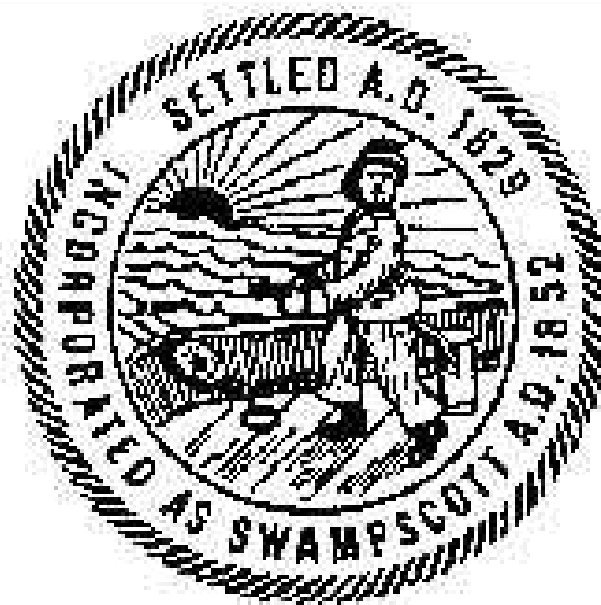
1. TOPOGRAPHIC PLAN OF LAND IN SWAMPSCOTT, MASSACHUSETTS, PREPARED BY MERRIMACK ENGINEERING OF ANDOVER, MASS., DATED JULY 25, 2016
2. CONTRACTOR SHALL VERIFY STONE BASE PLANARITY AND NOTIFY LANDSCAPE ARCHITECT OF ANY DISCREPANCIES.
3. SITE IMPROVEMENTS OTHER THAN THE SYNTHETIC TURF SYSTEM, TO BE PROVIDED BY OTHERS AND ARE SHOWN HERE FOR REFERENCE ONLY. SYNTHETIC TURF SYSTEM TO INCLUDE THE TURF, INFILL AND RESILIENT PAD, AS PER THE PLANS AND SPECS.



Huntress Associates, Inc.

Landscape Architecture & Land Planning

17 Tewksbury Street
Andover, Massachusetts 01810
978 470 8882 FAX 978 470 8890



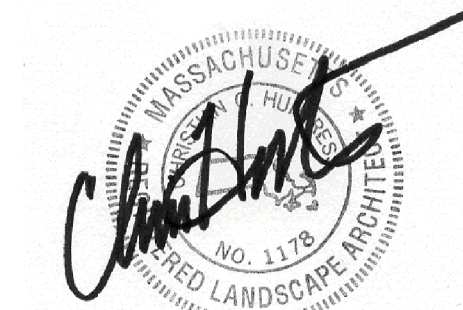
Project:

BLOCKSIDGE FIELD
Synthetic Turf

Swampscott, Massachusetts

Drawing Title:

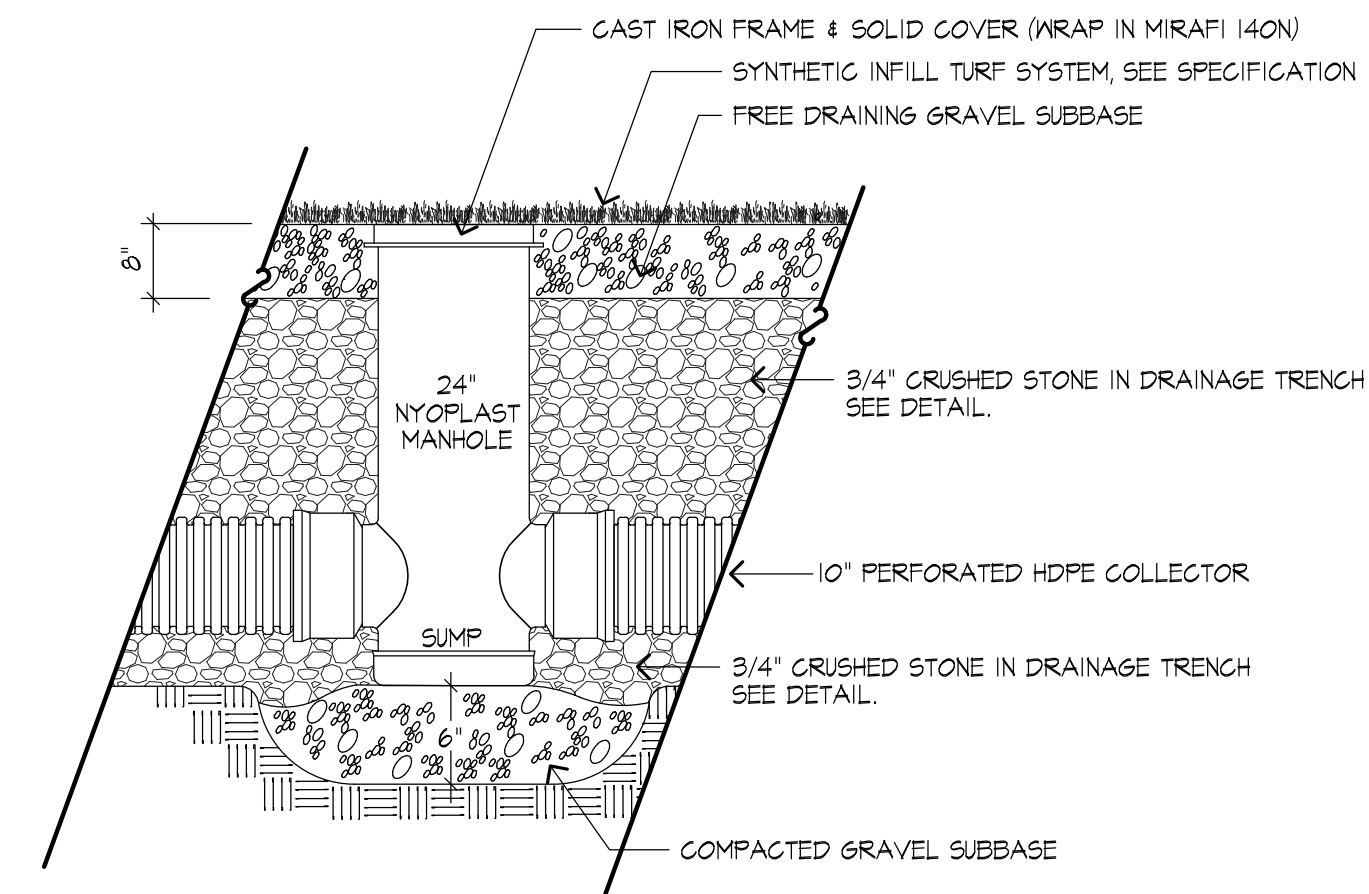
Grading, Drainage
& Utility Plan



Revision Date

Scale: 1" = 30'
Date: 1.15.17
Job: 00-107
File: PR-dot
Drawn: CCH
Checked: --
Drawing No. L-2
of 4

FREE DRAINING STONE BASE TO BE PROVIDED AND INSTALLED BY OTHERS. TURF INSTALLERS TO PROVIDE AND INSTALL INFILL SYNTHETIC TURF SYSTEM, INCLUDING RESILIENT PAD, AS OUTLINED IN THE PROJECT SPECIFICATIONS.



3 NYOPLAST TURF MANHOLE
SCALE: N.T.S.

Diagram illustrating the top view of the access frame assembly. The components labeled are:

- HALF PATCH COVER
- ACCESS FRAME
- STEEL GROUND SLEEVE

The diagram shows a rectangular access frame with a central circular opening. A half patch cover is attached to the left side of the frame. A steel ground sleeve is shown passing through the center of the frame, secured by a nut and washer on the right side. The label "TOP VIEW" is positioned below the diagram.

IN FILL SYNTHETIC TURF SYSTEM

HAND HOLE LID W/ CLAMP KIT

LOCK TOGGLE

FREE DRAINING SUBBASE

LEVELING BOLTS

NOTE: SET TOP OF BOX EDGE LEVEL WITH TOP OF FREE DRAINING SUBBASE

LEVELING BOLTS

COMPACT SUBGRADE

IN FILL SYNTHETIC TURF INSTALLATION

IN FILL TURF HAND HOLE: COMBOX 3500 W/ IN FILL TURF FILLER KIT BY SPORTSFIELD SPECIALTIES

5 HANDHOLE BOX DETAIL
SCALE: NTS



Revision _____ Date _____

Scale:	as noted	Drawing No.
Date:	1.15.17	L-3
Job:	00-107	
File:	PR-det	
Drawn:	CCH	
Checked:	--	of
		4

