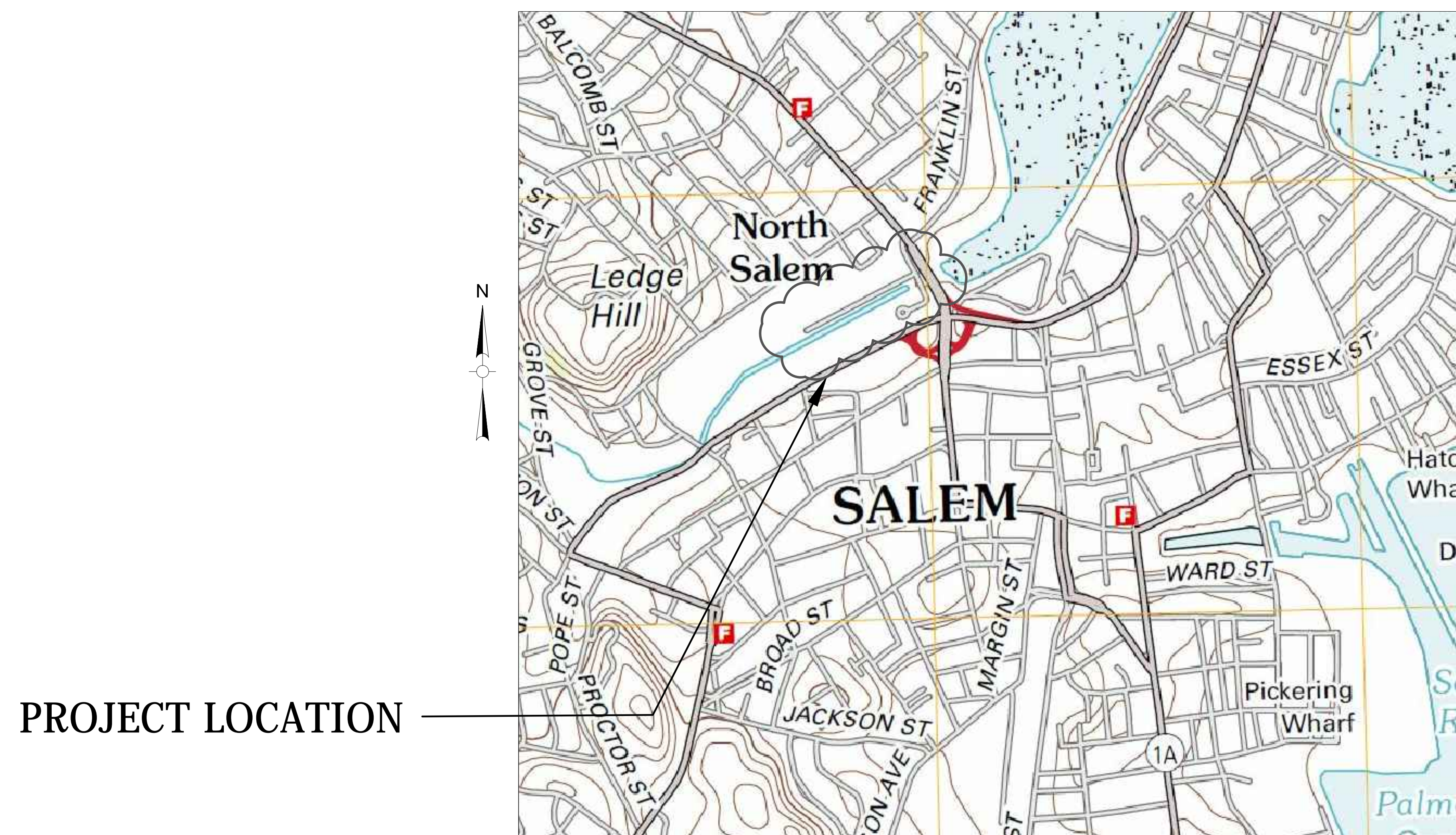


CITY OF SALEM, MASSACHUSETTS

COMMERCIAL STREET RETROFIT PROJECT

MARCH 2016



LOCUS MAP (NO SCALE)

DRAWING INDEX:

G-1: COVER
G-2: GENERAL NOTES
C-1-C-4: PLAN DRAWINGS
D-1-D-4: DETAILS


NEW ENGLAND CIVIL ENGINEERING CORP.



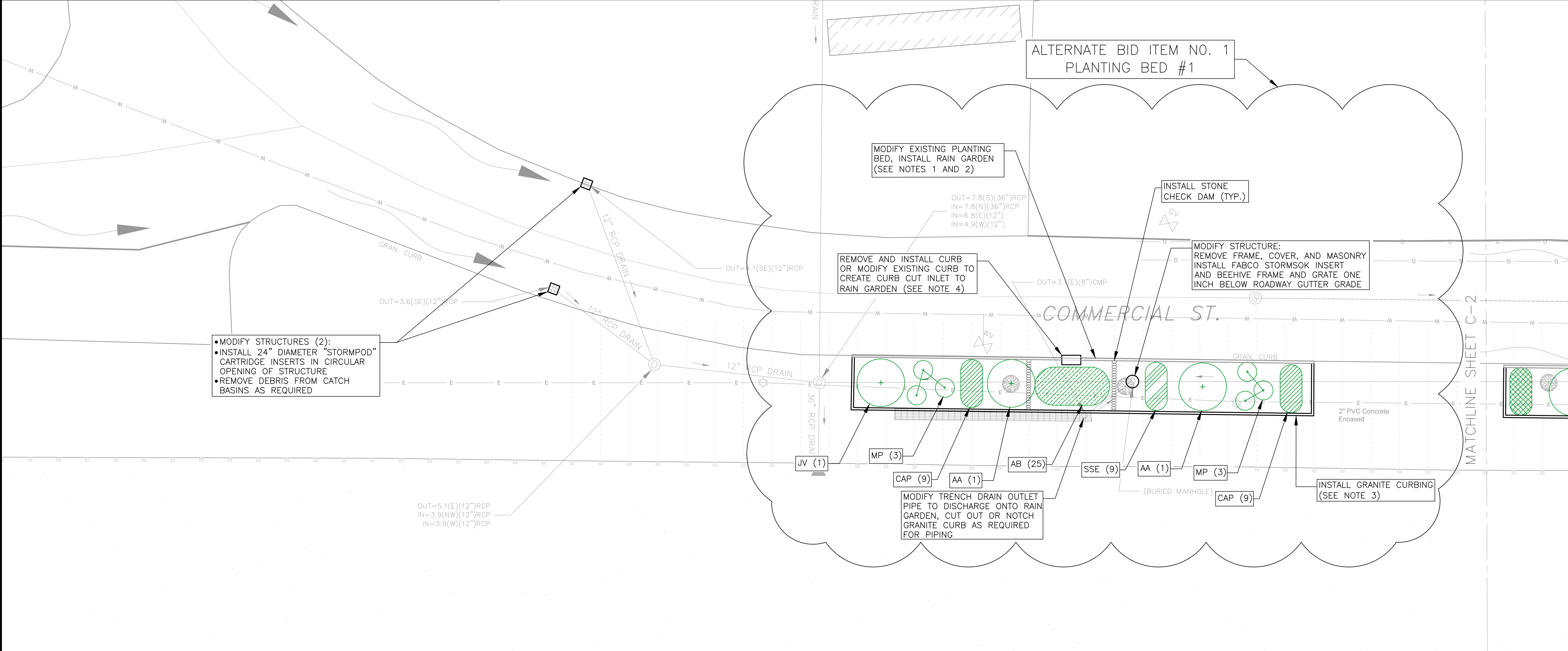
120 Washington Street
Suite #202E
Salem, MA 01970

(978) 741-7401
(978) 741-7402 (fax)

GENERAL NOTES					LEGEND				
<p>1. THE EXISTENCE, SIZE, LOCATION, ORIENTATION AND DESCRIPTION OF UTILITIES ARE FROM THE EXISTING INFORMATION PROVIDED, BUT ARE APPROXIMATE ONLY AND THE ENGINEER DOES NOT GUARANTEE THEIR NUMBER OR LOCATIONS. THE CONTRACTOR SHALL VERIFY THE LOCATIONS OF ALL UNDERGROUND UTILITIES BEFORE EXCAVATING.</p> <p>2. ALL INVERT DEPTHS ARE APPROXIMATE AND RELATIVE TO RIM ELEVATION. BENCHMARKS ARE NOT PROVIDED, CONTRACTOR RESPONSIBLE TO COMPLETE LEVEL SURVEY TO SET GRATES AND CURBING.</p> <p>3. PROPOSED INVERT ELEVATIONS AND SLOPES OF NEW OR REPLACEMENT SEWER/DRAIN PIPES AND SERVICES TO BE DETERMINED IN THE FIELD BY THE ENGINEER BASED ON CONTRACTOR'S SURVEY OF EXISTING INVERT ELEVATIONS OF CONNECTING DRAIN STRUCTURES AND EXPLORATORY EXCAVATIONS (TEST PITS).</p> <p>4. ALL SERVICES NOT SHOWN ON PLANS. CONTRACTOR TO ASSUME ALL HOMES SERVED BY WATER, SEWER, GAS, ELECTRIC, AND TELECOMMUNICATION AND PROTECT, RELOCATE, AND REPLACE SERVICES AS REQUIRED.</p> <p>5. LINES FOR POLICE AND FIRE ALARM BOXES, STREET LIGHTS, TRAFFIC SIGNALS AND OVERHEAD POWER, TELEPHONE AND CABLE TELEVISION LINES ARE NOT SHOWN ON THE PLANS. THE APPROPRIATE UTILITY COMPANIES OR AUTHORITIES SHALL BE CONSULTED FOR LOCATIONS OF THE ABOVE.</p> <p>6. ALL BURIED UTILITIES (WATER, GAS, SEWER, DRAIN, ELECTRIC, TELECOM) ARE SHOWN SCHEMATICALLY AND NOT TO SCALE AND CANNOT BE USED TO SCALE OFF OUTSIDE PIPE DIAMETERS, CONTRACTOR TO ASSUME ALL BURIED ELECTRIC AND TELECOM CONDUITS ARE INSTALLED IN MULTIPLE CONDUIT DUCT BANKS AND MAY BE CONCRETE ENCASED WHICH INCREASES THE DIMENSIONS OF THE DUCT BANKS, IN ADDITION, FLOWABLE FILL MAY ALSO EXIST ABOVE AND AROUND DUCT BANKS. CONTRACTOR TO COMPLETE TEST PITS AND ADJUST LAYOUT AND MEANS AND METHODS TO AVOID CONFLICTS BETWEEN NEW AND EXISTING UTILITIES.</p> <p>7. THE CONTRACTOR SHALL BE AWARE THAT BORINGS HAVE NOT BEEN PROVIDED AND THE EXISTING SOIL CONDITIONS AND GROUNDWATER LEVEL ARE NOT KNOWN. CONTRACTOR SHALL ASSUME THAT CONSTRUCTION DEWATERING DUE TO GROUNDWATER AND REMOVAL AND DISPOSAL OF UNSUITABLE SOILS WILL BE REQUIRED DURING CONSTRUCTION THROUGHOUT THE PROJECT AREA.</p> <p>8. THE CONTRACTOR SHALL BE AWARE THAT GROUNDWATER LEVELS ARE KNOWN TO BE HIGH AND HIGHLY VARIABLE DUE TO THE CLOSE PROXIMITY OF THE PROJECT TO THE OCEAN AND TIDAL IMPACTS. CONTRACTOR SHALL SCHEDULE CONSTRUCTION ACTIVITIES TO ACCOUNT FOR TIDAL IMPACTS ON GROUNDWATER LEVELS. CONTRACTOR SHALL ANTICIPATE GROUNDWATER DEWATERING WILL BE REQUIRED DURING CONSTRUCTION, WITH INCREASED DEWATERING REQUIRED DURING RAINFALL AND HIGH TIDE CONDITIONS.</p> <p>9. THE CONTRACTOR'S ATTENTION IS DIRECTED TO EXISTING LABELED SEWER MANHOLE OR DRAINAGE MANHOLE COVERS SHOWN ON THE PLANS AS THEY MAY NOT ACCURATELY REPRESENT THE UNDERGROUND SERVICE. PRIOR TO ANY WORK THE CONTRACTOR SHALL NOTIFY THE ENGINEER OR AN EXISTING COVER NOT ACCURATELY REPRESENTING THE SERVICE BELOW.</p> <p>10. CONTRACTOR SHALL BE AWARE THAT DRAIN PIPES ARE CONNECTION TO THE RIVER, WITHOUT TIDE GATES AND ARE TIDALLY INFLUENCED. CONTRACTOR TO SCHEDULE WORK TO AVOID HIGH TIDE / WET WEATHER CONDITIONS AS REQUIRED.</p> <p>11. EXISTING PAVEMENT THICKNESS, SIDEWALK MATERIALS, AND SUBBASE MATERIALS VARY AND MAY INCLUDE MULTIPLE, VARIED PAVEMENT MATERIALS.</p> <p>12. BEFORE EXCAVATING, BLASTING, BACKFILLING, GRADING, PAVEMENT RESTORATION, OR REPAIRING, ALL UTILITY COMPANIES, PUBLIC AND PRIVATE, MUST BE CONTACTED, INCLUDING THOSE IN CONTROL OF UTILITIES NOT SHOWN ON THESE PLANS. SEE CHAPTER 370, ACT OF 1963, MASSACHUSETTS GENERAL LAWS. THE OWNER AND ENGINEER ASSUME NO RESPONSIBILITY FOR DAMAGES INCURRED AS A RESULT OF UTILITIES OMITTED OR INACCURATELY SHOWN.</p> <p>13. THE CONTRACTOR SHALL PREMARK THE EXCAVATION AREA IN WHITE PAINT PRIOR TO CALLING THE DIG SAFE CENTER (TEL. NO. 1-888-DIG-SAFE). THE CONTRACTOR SHALL CONTACT THE DIG SAFE CENTER AT LEAST THREE BUSINESS DAYS PRIOR TO ANY EXCAVATION. IN ADDITION, NOTIFICATION SHALL ALSO BE GIVEN TO ALL AFFECTED PRIVATE AND/OR PUBLIC UTILITIES TO PERMIT STREET MARKING OF THEIR LINES.</p> <p>14. IF THE CONTRACTOR DAMAGES UTILITY SERVICES, HE SHALL IMMEDIATELY NOTIFY THE RESPECTIVE UTILITY COMPANY AND SHALL IMMEDIATELY REPLACE OR REPAIR.</p> <p>15. WHERE UTILITY RELOCATION IS REQUIRED, THE CONTRACTOR SHALL NOTIFY THE AFFECTED UTILITY COMPANY AT LEAST 30 DAYS IN ADVANCE OF CONSTRUCTION AND SHALL COORDINATE THE PROPOSED WORK WITH THE UTILITY RELOCATION.</p> <p>16. THE CONTRACTOR SHALL VERIFY EXISTING CONDITIONS INFORMATION AND REPORT ANY DISCREPANCIES BETWEEN THE PLANS AND THE ACTUAL CONDITIONS TO THE ENGINEER PRIOR TO BEGINNING WORK.</p> <p>17. EXPLORATORY EXCAVATIONS (TEST PITS) SHALL BE EXCAVATED AT THOSE LOCATIONS INDICATED ON THE PLANS AND WHERE ORDERED AND APPROVED BY THE OWNER. TEST PIT EXCAVATIONS SHALL BE MADE TO DETERMINE THE LOCATIONS OF ALL EXISTING UTILITIES OR STRUCTURES IN ADVANCE OF CONSTRUCTION OPERATIONS SO THAT ANY REQUIRED CHANGES IN ALIGNMENT AND/OR GRADE OF THE PROPOSED WORK OR UTILITY LOCATIONS MAY BE DETERMINED. ALL DECISIONS RELATIVE TO UTILITY CONFLICTS AND RELOCATION REQUIREMENTS WILL BE MADE BY THE RESIDENT ENGINEER.</p> <p>18. DAMAGE OF PROPERTY BEYOND THE WORK LIMITS CAUSED BY THE CONTRACTOR'S OPERATIONS SHALL BE REPAIRED BY THE CONTRACTOR AT THE CONTRACTOR'S EXPENSE, SUBJECT TO THE APPROVAL OF THE ENGINEER.</p> <p>19. WHERE WATER LINES, DRAINAGE PIPES OR STRUCTURES ARE ABANDONED IN PLACE, CONTRACTOR SHALL MAKE SURE THAT ALL CONNECTING PIPES, INLETS AND OUTLETS ARE PLUGGED.</p> <p>20. CONTRACTOR TO PROTECT AND SUPPORT OR REMOVE AND REPLACE SIGNS, POSTS, HYDRANTS, FENCES, GATES, OR OTHER SURFACE FEATURES THAT OBSTRUCT CONSTRUCTION OPERATIONS OR ARE DAMAGED BY CONSTRUCTION.</p> <p>21. AREAS DISTURBED DURING CONSTRUCTION SHALL BE RESTORED BY THE CONTRACTOR TO THEIR ORIGINAL CONDITION AT THE CONTRACTOR'S EXPENSE.</p> <p>22. ALL EXISTING MANHOLE FRAMES AND COVERS AND CATCH BASIN FRAMES AND GRATES REMOVED BUT NOT REUSED, AND SELECTED FOR SALVAGE BY THE OWNER, SHALL REMAIN THE PROPERTY OF THE OWNER AND SHALL BE DELIVERED BY THE CONTRACTOR TO A LOCATION DESIGNATED BY THE OWNER. CASTINGS NOT SELECTED BY THE OWNER FOR SALVAGE SHALL BE DISPOSED OF BY THE CONTRACTOR.</p> <p>23. CONTRACTOR SHALL BACKFILL, COMPACT, AND PAVE IN ACCORDANCE WITH THE REQUIREMENTS OF THE MASSACHUSETTS HIGHWAY DEPARTMENT (MHD) AND THE CITY OF SALEM AS DIRECTED BY ENGINEER, INCLUDING AT A MINIMUM THE REQUIREMENTS SHOWN ON DETAILS.</p> <p>24. PERMANENT PAVEMENT SHALL BE PLACED BETWEEN APRIL 15TH AND OCTOBER 15TH OF EACH CALENDAR YEAR.</p> <p>25. THE CONTRACTOR SHALL PROTECT TRAVELED WAYS AND PEDESTRIAN WAYS FROM CONSTRUCTION DEBRIS AT ALL TIMES.</p> <p>26. CONTRACTOR SHALL MAINTAIN A SINGLE LANE (TWO-WAY) OF TRAFFIC AT ALL TIMES AND ACCESS FOR EMERGENCY VEHICLES AND PEDESTRIANS. CONTRACTOR SHALL COORDINATE TRAFFIC MANAGEMENT PLAN WITH LOCAL POLICE DEPARTMENT. CONTRACTOR SHALL BE RESPONSIBLE FOR MANAGEMENT OF TRAFFIC AND PUBLIC SAFETY, INCLUDING SIGNAGE AND DETOURS. TRENCHES MUST BE PASSABLE AND GRAVEL MUST BE MAINTAINED. CONTRACTOR SHALL PREPARE A TRAFFIC MANAGEMENT PLAN IN ACCORDANCE WITH THE REQUIREMENTS OF THE LOCAL POLICE DEPARTMENT IF REQUIRED. CONTRACTOR SHALL REVIEW TRAFFIC MANAGEMENT PLAN WITH THE POLICE DEPARTMENT PRIOR TO BEGINNING CONSTRUCTION LAYOUT.</p> <p>27. CONTRACTOR SHALL NOT BE PROVIDED A STAGING AREA BY THE OWNER.</p> <p>28. ALL EROSION AND SEDIMENTATION CONTROL DEVICES SHALL BE INSTALLED AND APPROVED BY THE ENGINEER PRIOR TO THE COMMENCEMENT OF CONSTRUCTION. DEVICES SHALL INCLUDE AT A MINIMUM GEOTEXTILE (SILT SACK) IN ALL CATCH BASINS AND A BARRIER CONSISTING OF A SILT FENCE OR MULCH SOCK AROUND SOIL STOCKPILES AND ALONG PROJECT BOUNDARY AS DIRECTED.</p> <p>29. CONTRACTOR SHALL MAINTAIN EDGE OF ROADWAY DRAINAGE PATTERNS INCLUDING REPLACEMENT OF PAVED AND UNPAVED SWALES, BERMS, AND CURBS.</p> <p>30. THE CONTRACTOR SHALL PROVIDE METHODS DURING DEWATERING OPERATIONS AND TO CONTROL STORM WATER RUNOFF THAT WILL NOT ALLOW SILT OR DEBRIS TO ENTER EXISTING DRAINAGE FACILITIES OR CREATE NUISANCES. THE CONTRACTOR SHALL BE RESPONSIBLE FOR CLEANING EXISTING OR NEW FACILITIES IF SILTATION OCCURS DUE TO THE CONTRACTOR'S OPERATIONS.</p> <p>31. THE CONTRACTOR SHALL DISPOSE OF ALL DEMOLISHED MATERIALS, RUBBISH, EXCAVATED MATERIAL AND DEBRIS, UNLESS OTHERWISE NOTED. IN ACCORDANCE WITH ALL LOCAL, STATE AND FEDERAL REQUIREMENTS HAVING JURISDICTION. THE CONTRACTOR SHALL BE RESPONSIBLE FOR OBTAINING AND PAYING FOR ALL REQUIRED DISPOSAL PERMITS AND FEES.</p> <p>32. NO TRASH, GREASE TUBES, OR DEBRIS SHALL BE THROWN INTO CONSTRUCTION TRENCHES PRIOR TO BACKFILL.</p> <p>33. CONTRACTOR TO MAINTAIN HAZMAT SPILL KITS ON SITE AT ALL TIMES.</p> <p>34. CONTRACTOR SHALL BE RESPONSIBLE FOR CONTROLLING DUST DURING CONSTRUCTION OPERATIONS INCLUDING BUT NOT LIMITED TO REGULAR STREET SWEEPING AND APPLICATIONS OF CALCIUM CHLORIDE OR OTHER APPROVED DUST INHIBITOR.</p> <p>35. CONTRACTOR IS RESPONSIBLE TO PROTECT ALL TREES TO REMAIN WITHIN PROJECT AREA FROM DAMAGE.</p> <p>36. SIDEWALK, CURB, DRIVEWAY APRONS, AND ADA RAMP REPAIRS AND REPLACEMENTS ARE NOT SHOWN ON DRAWINGS AND SHALL BE DETERMINED IN THE FIELD BY THE ENGINEER IN AREAS WHERE PROPOSED WORK IMPACTS EXISTING SIDEWALKS.</p>					<div>EXISTING</div> <div>PROPOSED</div> <div>SEWER MANHOLE</div> <div>DRAIN MANHOLE</div> <div>ELECTRIC MANHOLE</div> <div>UTILITY POLE</div> <div>LIGHT POST</div> <div>CATCH BASINS</div> <div>OUTFALL</div> <div>GAS VALVE</div> <div>WATER GATE VALVE</div> <div>TREE</div> <div>SEWER LINE</div> <div>DRAIN LINE</div> <div>GAS LINE</div> <div>WATER LINE</div> <div>ELECTRIC LINE</div> <div>TELEPHONE LINE</div> <div>HYDRANT</div> <div>CURB INLET</div> <div>TIE BACK</div> <div>TIMBER PILE</div>				

Client	CITY OF SALEM, MASSACHUSETTS	Scale	1" = 20'				 <div>New England Civil Engineering Corp. 120 Washington Street SALEM, MASSACHUSETTS</div>	Sheet
Project	COMMERCIAL STREET RETROFIT PROJECT	Date	3/3/2016					
		Job	Commercial Street					
		Designed by	WMR					
		Drawn by	DJW					
	GENERAL NOTES AND LEGEND	Checked by	WMR	No.	Description	Date		G-2
		Approved by	WMR	File: H:\Clients\Salem\CommercialSt_Grant\CAD\Commercial St Details\CoverNotes.dwg				

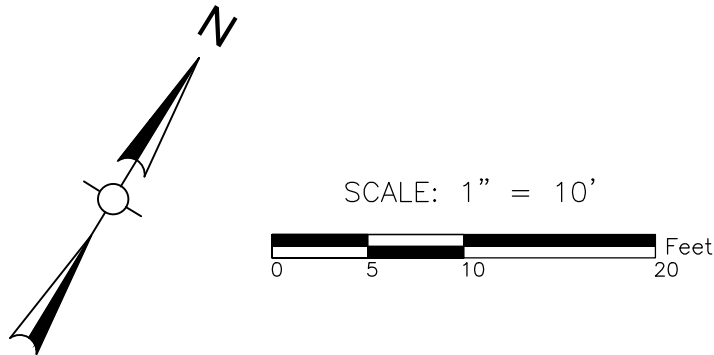
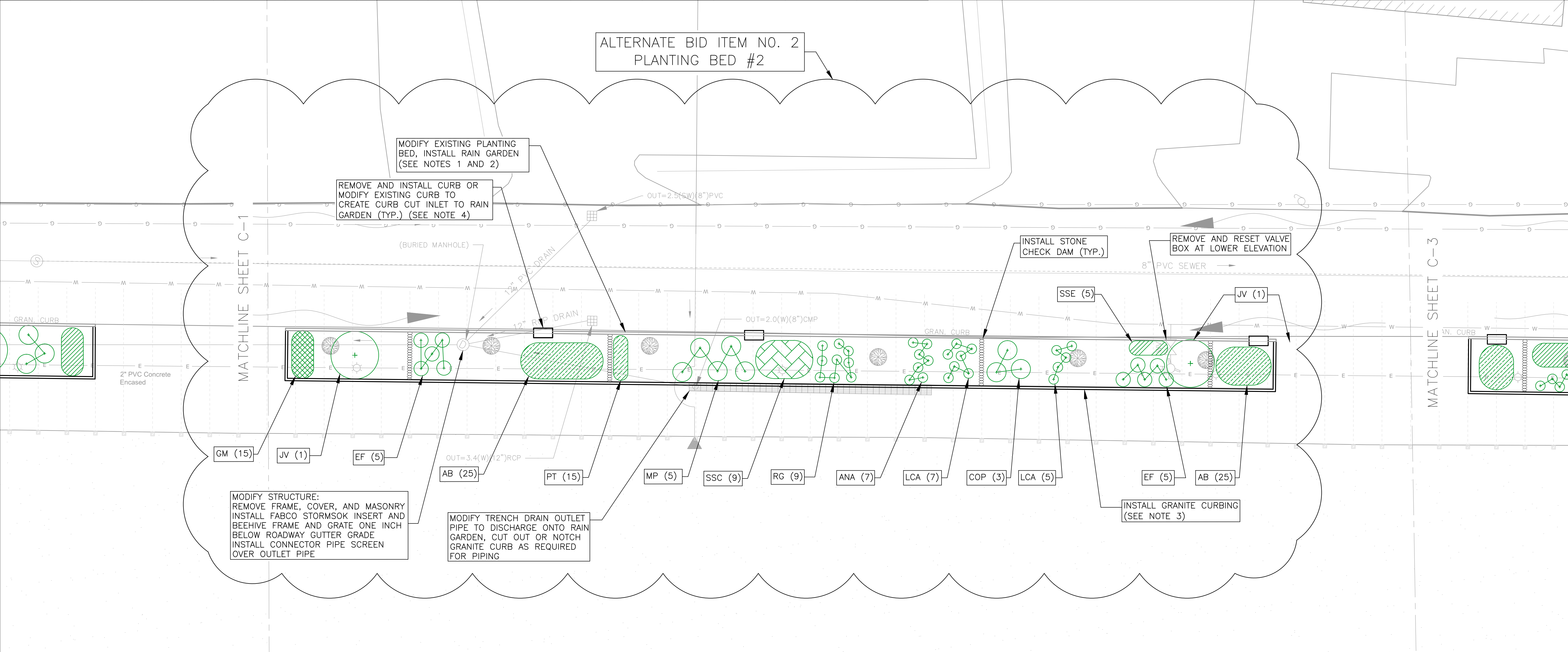
PLANT LIST FOR THIS SHEET ONLY						
SYMBOL	AB	CAP	SSE	MP	AA	JV
QUANTITY	25	18	9	6	2	1
COMMON NAME	American Beachgrass	Weeping Sedge	Seaside Goldenrod	Northern Bayberry	Shadblow Serviceberry	Eastern Red Cedar
LATIN NAME	<i>Ammophila breviligulata</i>	<i>Carex pendula</i>	<i>Solidago sempervirens</i>	<i>Myrica pennsylvanica</i>	<i>Amelanshier canadensis</i>	<i>Juniperus virginiana</i>
DESCR.	grass	grass	perennial	shrub	tree	tree
SIZE	100 bare root plants per bundle/ 5-8 bundles per box	#3	Gallon	#3	#3	#3



- NOTES:
- 1.) REMOVE AND DISPOSE EXISTING LANDSCAPING TIMBERS, PLANTS, AND SOIL TO DEPTH OF 30" BELOW SIDEWALK GRADE. FURNISH AND INSTALL 18" MINIMUM DEPTH RAIN GARDEN SOIL AND PLANTINGS AS SHOWN, INSTALL STONE CHECK DAMS AND MULCH.
 - 2.) HAND EXCAVATION REQUIRED TO EXPOSE AND SUPPORT STREET LIGHT CONDUITS, EXPOSE SPRINKLER PIPING AND WIRES (TO BE DISCONNECTED AND REMOVED BY CONTRACTOR), AND EXPOSE AND PROTECT RETAINING WALL TIE BACK CABLES (SEE DETAIL SHEETS).
 - 3.) REMOVE AND RESET OR FURNISH AND INSTALL GRANITE CURB TO INCLUDE SAW CUTTING PAVEMENT, SETTING CURBS IN CONCRETE, AND BACKFILL / PAVING OF TRENCH. THE CITY HAS STOCKPILED SOME GRANITE CURBING ON COMMERCIAL STREET THAT MAY BE USED FOR THIS PROJECT, OTHERWISE CONTRACTOR TO FURNISH AND DELIVER CURB AS DIRECTED.
 - 4.) CURB INLETS TO INCLUDE REMOVING CURB, CUTTING, AND RE-INSTALLING IN ACCORDANCE WITH NOTE 3.

Client	CITY OF SALEM, MASSACHUSETTS	Scale	1"=10'						
Project	COMMERCIAL STREET RETROFIT PROJECT	Date	3/1/2016						
	PLANTING BED #1	Job	Commercial Street						
		Designed by	WMR						
		Drawn by	DJW						
		Checked by	WMR	No.	Description	Date			
		Approved by	WMR	File: H:\Clients\Salem\CommercialSt_Grant\CAD\Commercial St_Design.dwg					
						New England Civil Engineering Corp.			Sheet
						120 Washington Street SALEM, MASSACHUSETTS			C-1

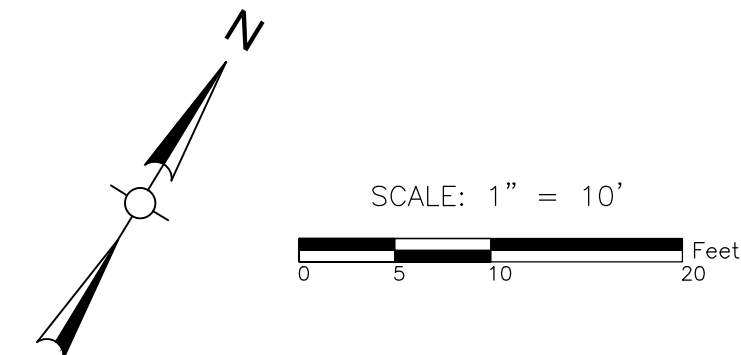
PLANT LIST FOR THIS SHEET ONLY												
SYMBOL	AB	SSC	GM	ANA	LCA	SSE	PT	RG	EF	MP	COP	JV
QUANTITY	50	9	15	7	12	5	15	9	10	5	3	2
COMMON NAME	American Beachgrass	Little Bluestem	Geranium	New England Aster	Sea Lavender	Seaside Goldenrod	Winter Cinquefoil	Black Eyed Susan	Joe Pyeweed	Northern Bayberry	Sweet Fern	Eastern Red Cedar
LATIN NAME	Ammophila breviligulata	Schizachyrium scoparium	Geranium macrorrhizum	Aster novae-angliae	Limonium carolinianum	Solidago sempervirens	Potentilla tridentata	Rudbeckia Goldstrum	Eupatorium fistulosum	Myrica pennsylvanica	Comptonia peregrina	Juniperus virginiana
DESCR.	grass	grass	perennial	perennial	perennial	perennial	perennial	perennial	perennial	shrub	shrub	tree
SIZE	100 bare root plants per bundle/ 5-8 bundles per box	#2	Quart	Gallon	Gallon	Gallon	Quart	Gallon	Gallon	#3	#1	#3



- NOTES:
- 1.) REMOVE AND DISPOSE EXISTING LANDSCAPING TIMBERS, PLANTS, AND SOIL TO DEPTH OF 30" BELOW SIDEWALK GRADE. FURNISH AND INSTALL 18" MINIMUM DEPTH RAIN GARDEN SOIL AND PLANTINGS AS SHOWN, INSTALL STONE CHECK DAMS AND MULCH.
 - 2.) HAND EXCAVATION REQUIRED TO EXPOSE AND SUPPORT STREET LIGHT CONDUITS, EXPOSE SPRINKLER PIPING AND WIRES (TO BE DISCONNECTED AND REMOVED BY CONTRACTOR), AND EXPOSE AND PROTECT RETAINING WALL TIE BACK CABLES (SEE DETAIL SHEETS).
 - 3.) REMOVE AND RESET OR FURNISH AND INSTALL GRANITE CURB TO INCLUDE SAW CUTTING PAVEMENT, SETTING CURBS IN CONCRETE, AND BACKFILL / PAVING OF TRENCH. THE CITY HAS STOCKPILED SOME GRANITE CURBING ON COMMERCIAL STREET THAT MAY BE USED FOR THIS PROJECT, OTHERWISE CONTRACTOR TO FURNISH AND DELIVER CURB AS DIRECTED.
 - 4.) CURB INLETS TO INCLUDE REMOVING CURB, CUTTING, AND RE-INSTALLING IN ACCORDANCE WITH NOTE 3.

Client	CITY OF SALEM, MASSACHUSETTS	Scale	1"=10'				New England Civil Engineering Corp.	120 Washington Street SALEM, MASSACHUSETTS	Sheet C-2
Project	COMMERCIAL STREET RETROFIT PROJECT	Date	3/2/2016						
		Job	Commercial Street						
		Designed by	WMR						
		Drawn by	DJW						
		Checked by	WMR	No.	Description	Date			
	PLANTING BED #2	Approved by	WMR	File: H:\Clients\Salem\CommercialSt_Grant\CAD\Commercial St_Design.dwg					

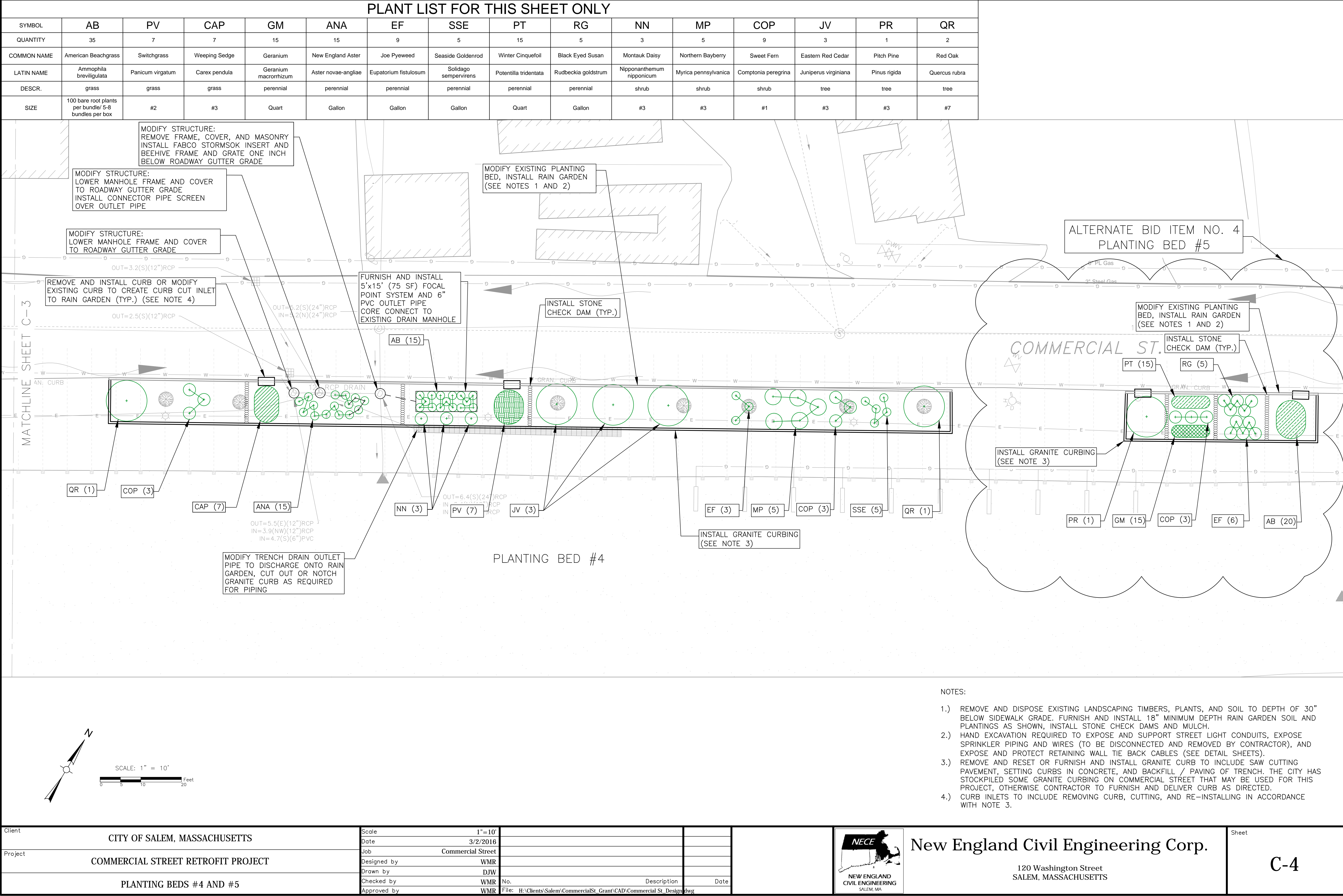
PLANT LIST FOR THIS SHEET ONLY												
SYMBOL	AB	SSC	PV	CAP	GM	ANA	EF	SSE	PT	MP	COP	AA
QUANTITY	50	7	5	8	15	16	12	3	60	3	6	3
COMMON NAME	American Beachgrass	Little Bluestem	Switchgrass	Weeping Sedge	Geranium	New England Aster	Joe Pyeweed	Seaside Goldenrod	Winter Cinquefoil	Northern Bayberry	Sweet Fern	Shadblow Serviceberry
LATIN NAME	Ammophila breviligulata	Schizachyrium scoperium	Panicum virgatum	Carex pendula	Geranium macrorrhizum	Aster novae-angliae	Eupatorium fistulosum	Solidago sempervirens	Potentilla tridentata	Myrica pennsylvanica	Comptonia peregrina	Amelanshier canadensis
DESCR.	grass	grass	grass	grass	perennial	perennial	perennial	perennial	perennial	shrub	shrub	tree
SIZE	100 bare root plants per bundle/ 5-8 bundles per box	#2	#2	#3	Quart	Gallon	Gallon	Gallon	Quart	#3	#1	#3

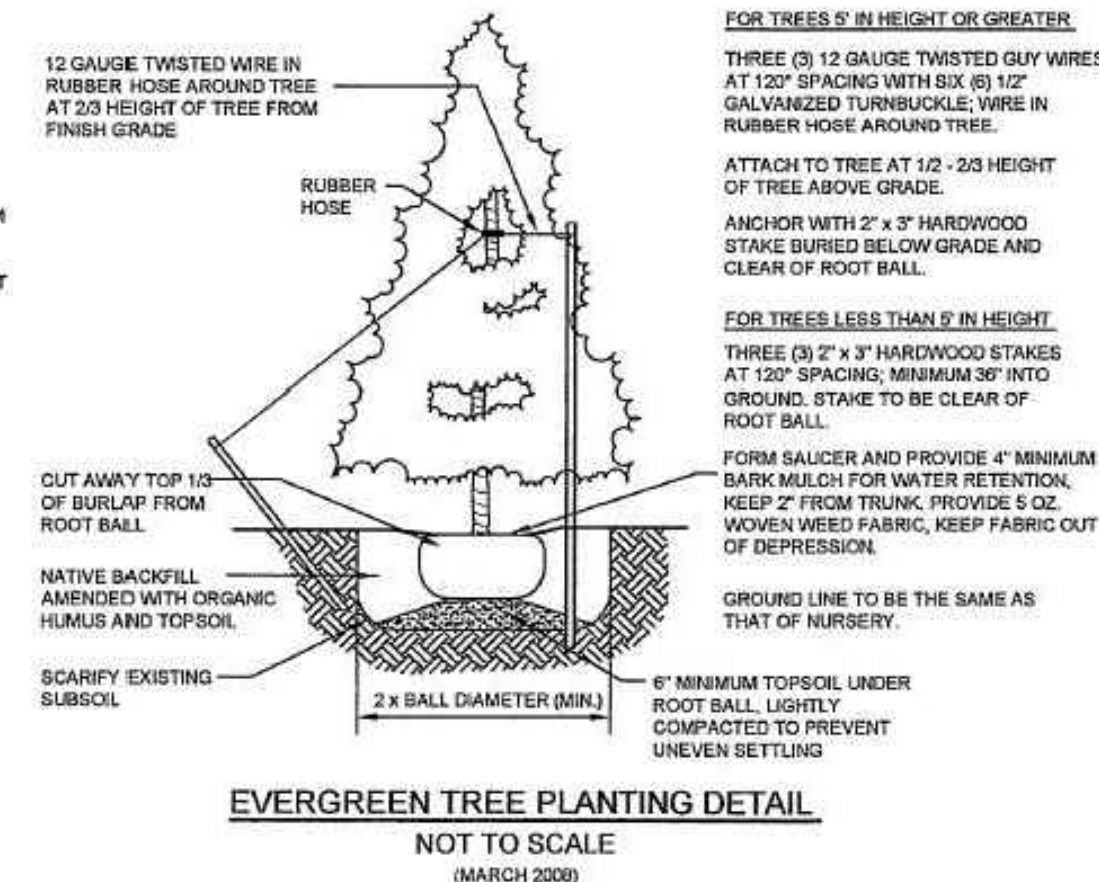
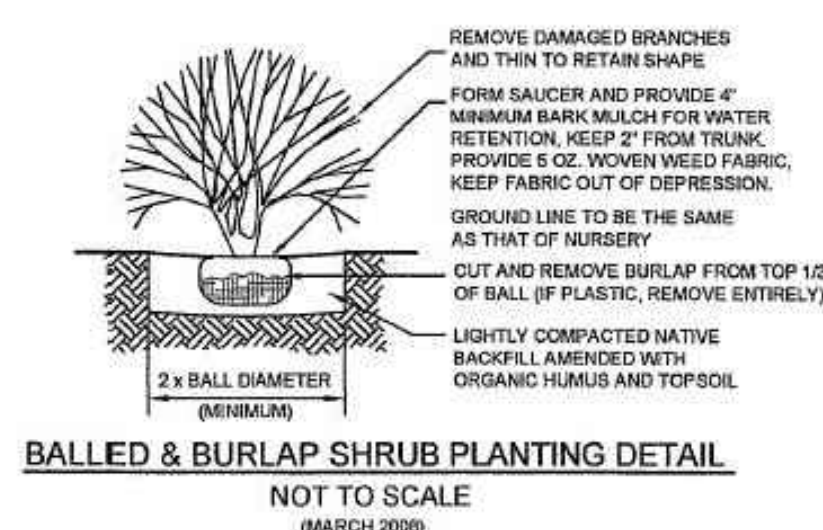
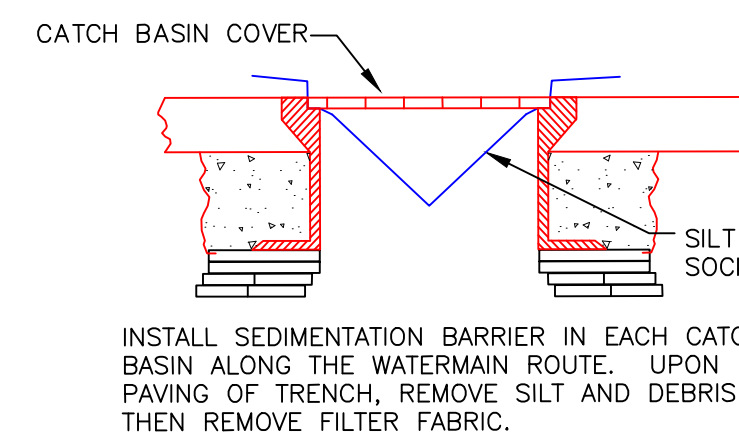
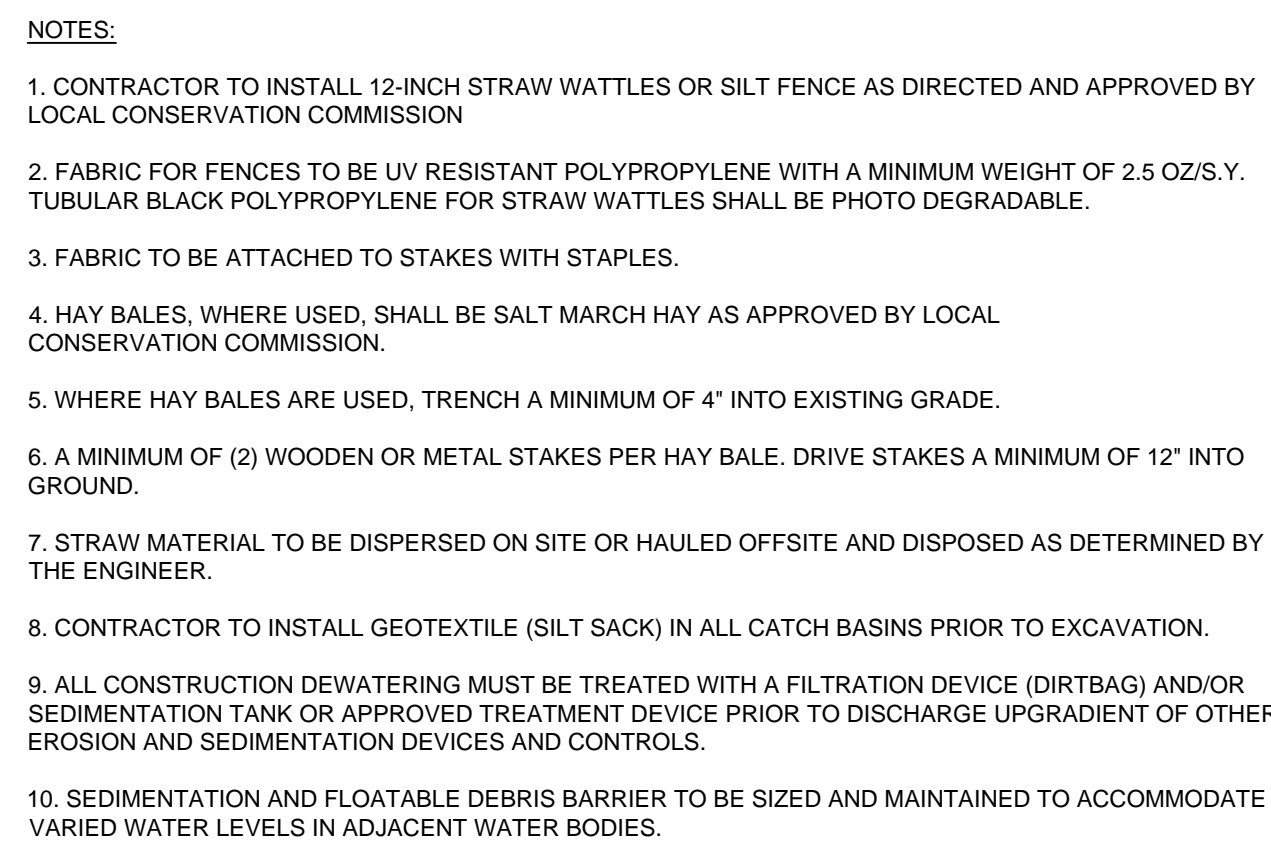


- 1.) REMOVE AND DISPOSE EXISTING LANDSCAPING TIMBERS, PLANTS, AND SOIL TO DEPTH OF 30" BELOW SIDEWALK GRADE. FURNISH AND INSTALL 18" MINIMUM DEPTH RAIN GARDEN SOIL AND PLANTINGS AS SHOWN, INSTALL STONE CHECK DAMS AND MULCH.
- 2.) HAND EXCAVATION REQUIRED TO EXPOSE AND SUPPORT STREET LIGHT CONDUITS, EXPOSE SPRINKLER PIPING AND WIRES (TO BE DISCONNECTED AND REMOVED BY CONTRACTOR), AND EXPOSE AND PROTECT RETAINING WALL TIE BACK CABLES (SEE DETAIL SHEETS).
- 3.) REMOVE AND RESET OR FURNISH AND INSTALL GRANITE CURB TO INCLUDE SAW CUTTING PAVEMENT, SETTING CURBS IN CONCRETE, AND BACKFILL / PAVING OF TRENCH. THE CITY HAS STOCKPILED SOME GRANITE CURBING ON COMMERCIAL STREET THAT MAY BE USED FOR THIS PROJECT, OTHERWISE CONTRACTOR TO FURNISH AND DELIVER CURB AS DIRECTED.
- 4.) CURB INLETS TO INCLUDE REMOVING CURB, CUTTING, AND RE-INSTALLING IN ACCORDANCE WITH NOTE 3.




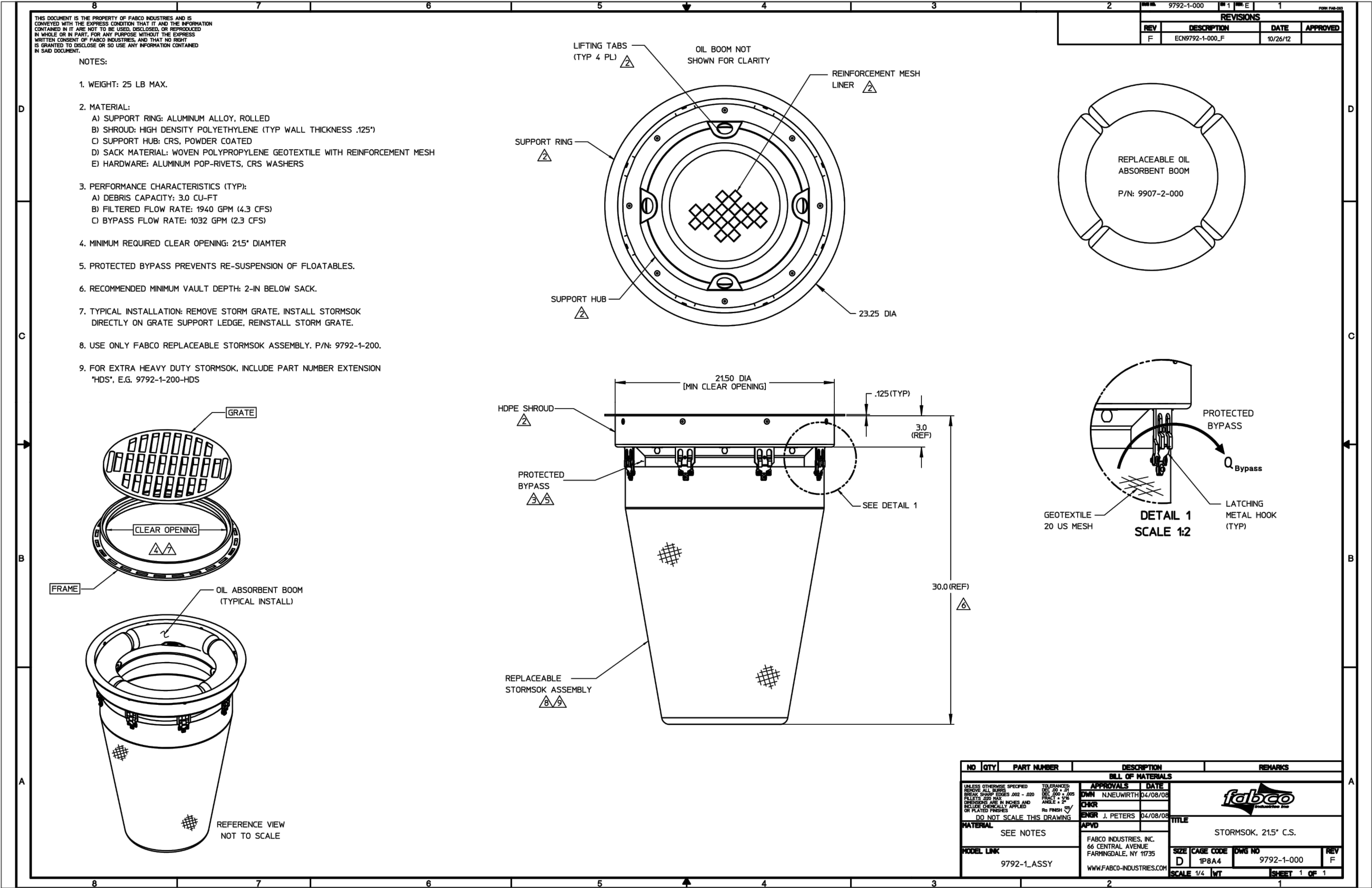
NECE
NEW ENGLAND
CIVIL ENGINEERING
SALEM, MA



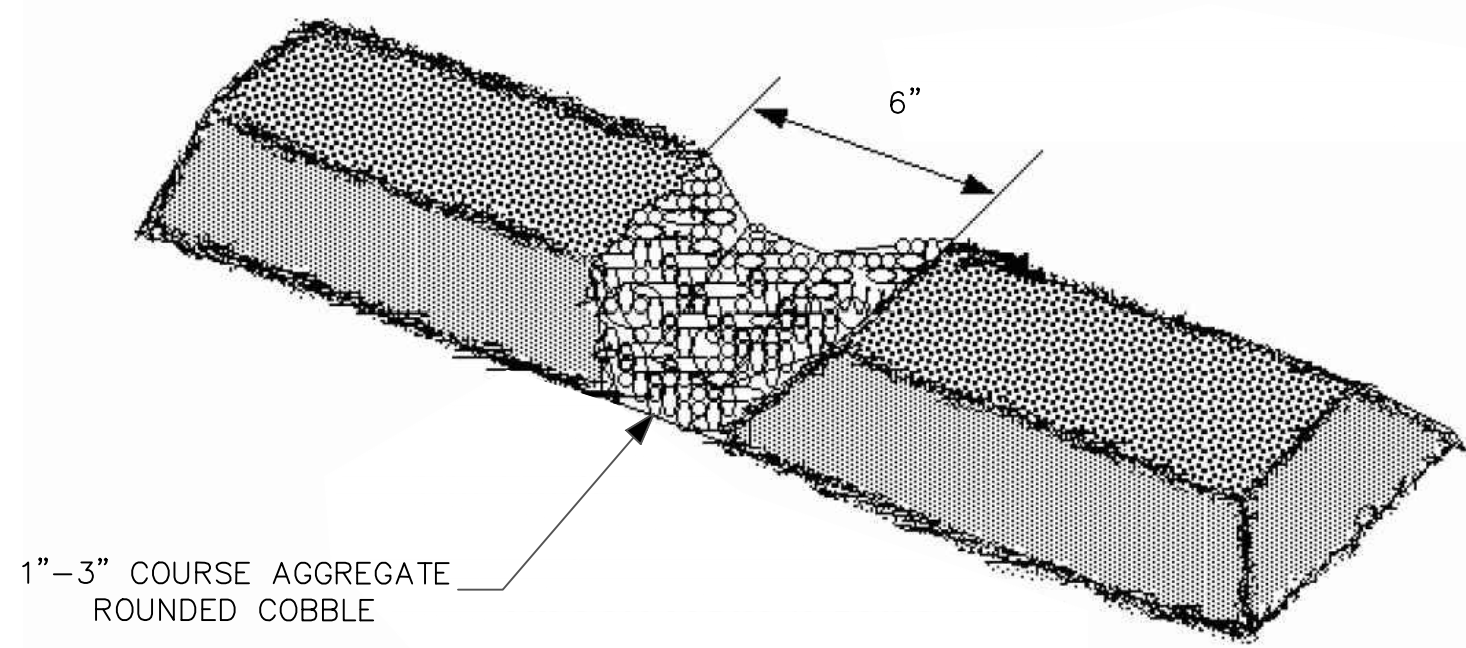


PLANT DETAILS
NOT TO SCALE

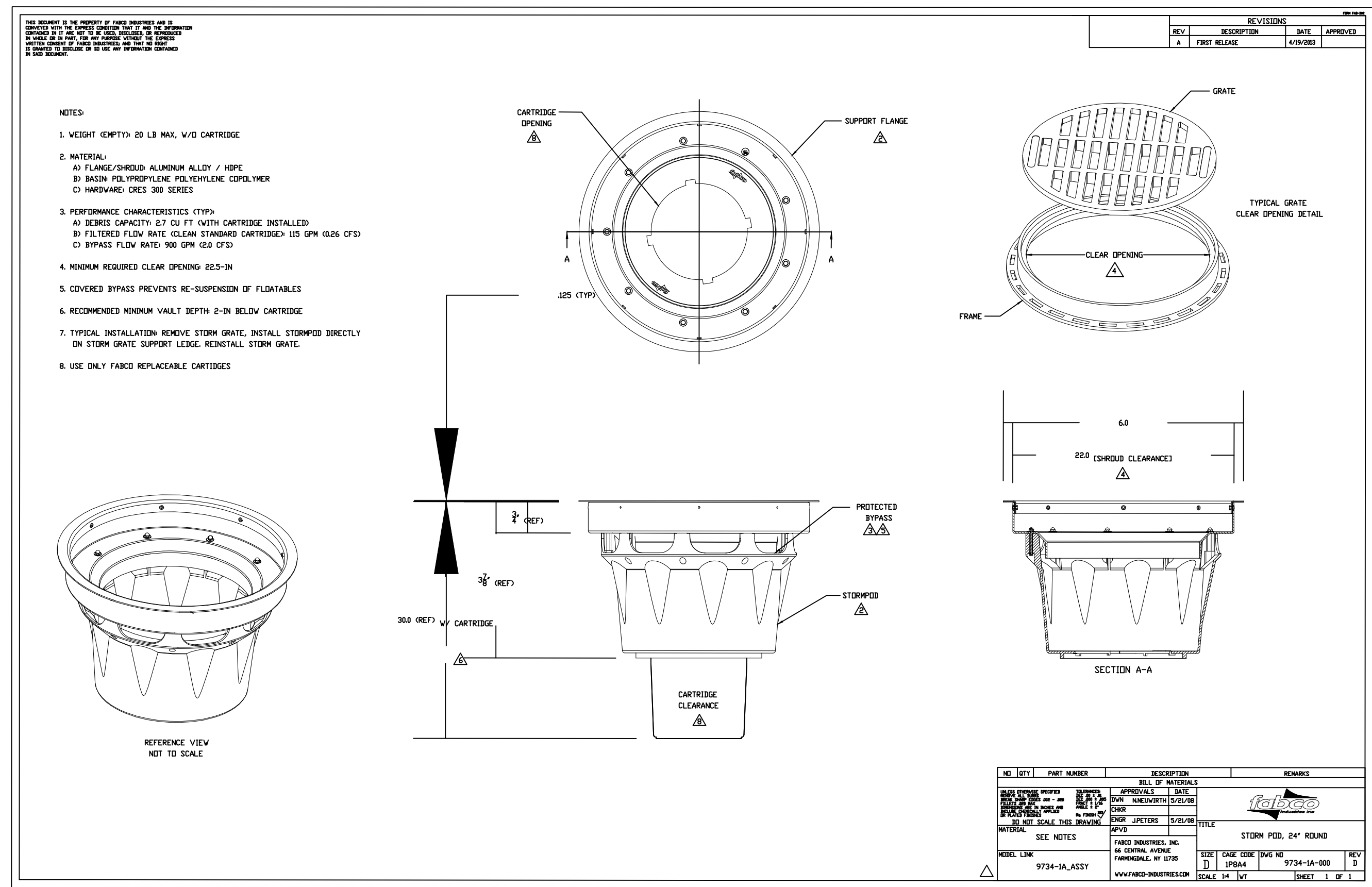
Client	CITY OF SALEM, MASSACHUSETTS	Scale	N.T.S.			 <p>NEW ENGLAND CIVIL ENGINEERING SALEM, MA</p>	<p>New England Civil Engineering Corp.</p> <p>120 Washington Street SALEM, MASSACHUSETTS</p>	<p>Sheet</p> <p>D-1</p>
Project	COMMERCIAL STREET RETROFIT PROJECT	Date	3/3/2016					
		Job	Commercial Street					
		Designed by	WMR					
		Drawn by	DJW					
	DETAILS	Checked by	WMR	No.	Description	Date		
		Approved by	WMR	File:	H:\Clients\Salem\Commercial St Grant\CAD\Commercial St Details\coverNotes.dwg			



FABCO STORMSOK
NOT TO SCALE



STONE CHECK DAM
NOT TO SCALE



FABCO STORM POD
NOT TO SCALE

Client
CITY OF SALEM, MASSACHUSETTS

Project
COMMERCIAL STREET RETROFIT PROJECT

DETAILS

Scale
N.T.S.

Date
3/2/2016

Job
Commercial Street

Designed by
WMR

Drawn by
DJW

Checked by
WMR

Approved by
WMR

No.
Description
Date

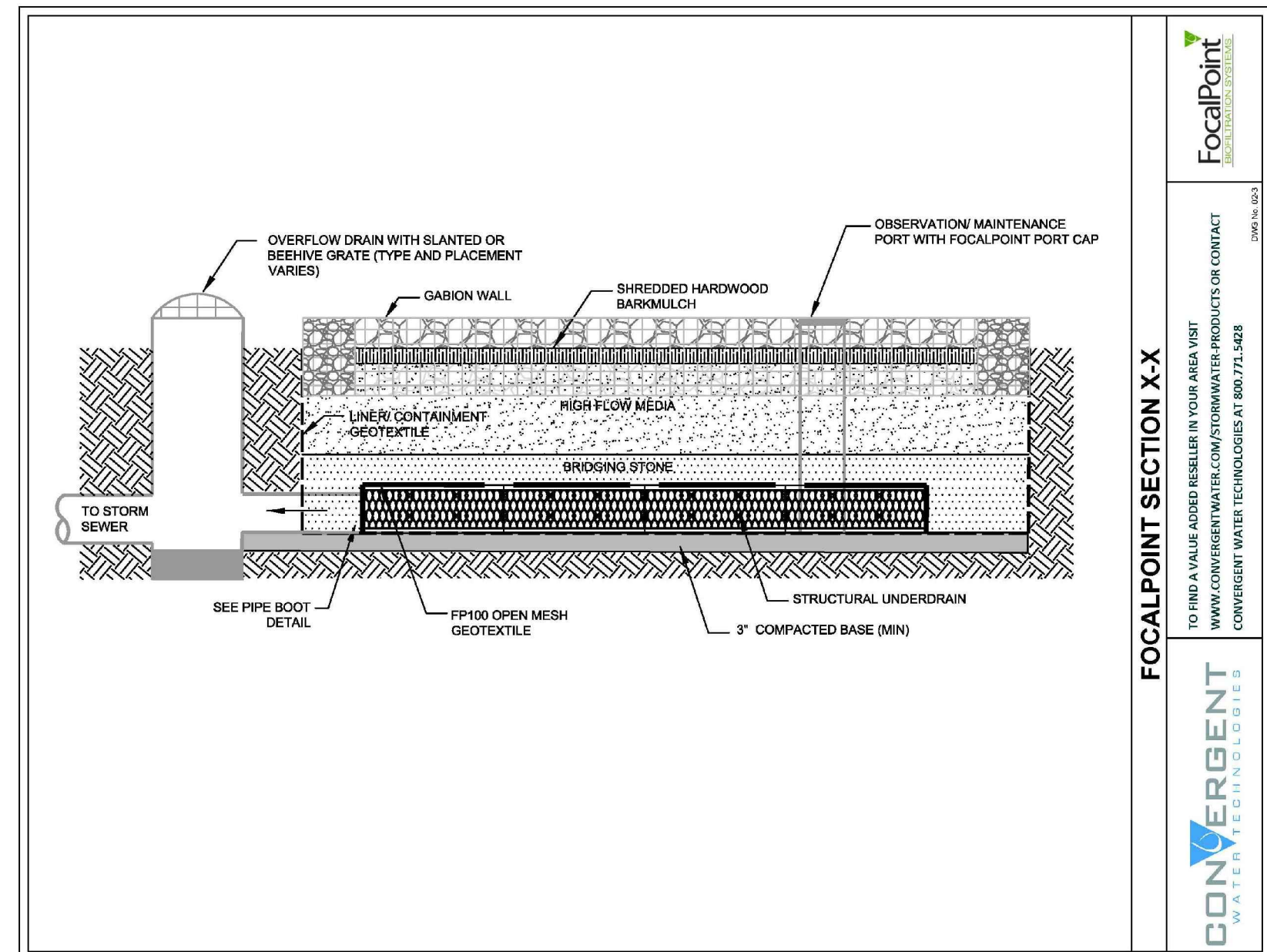
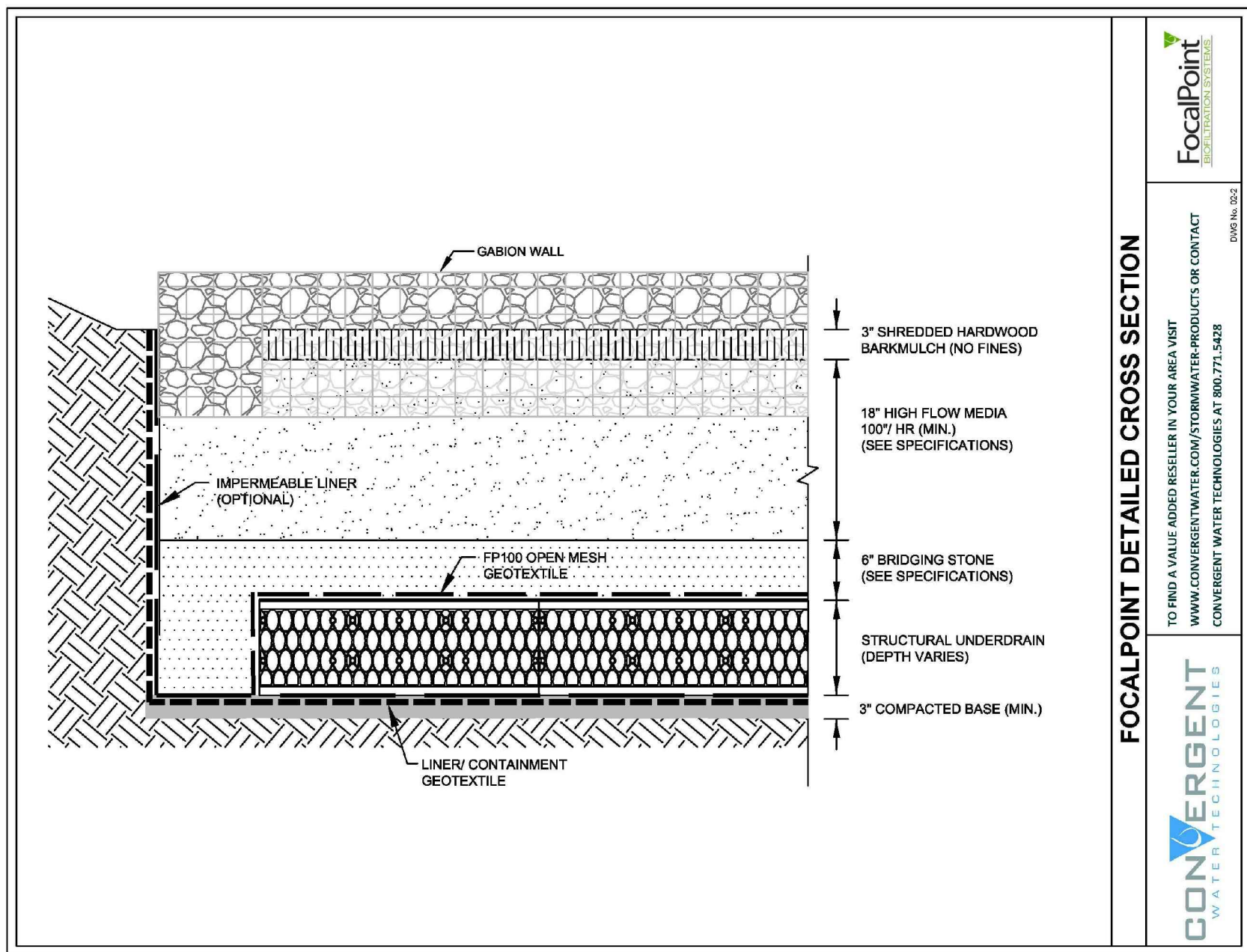
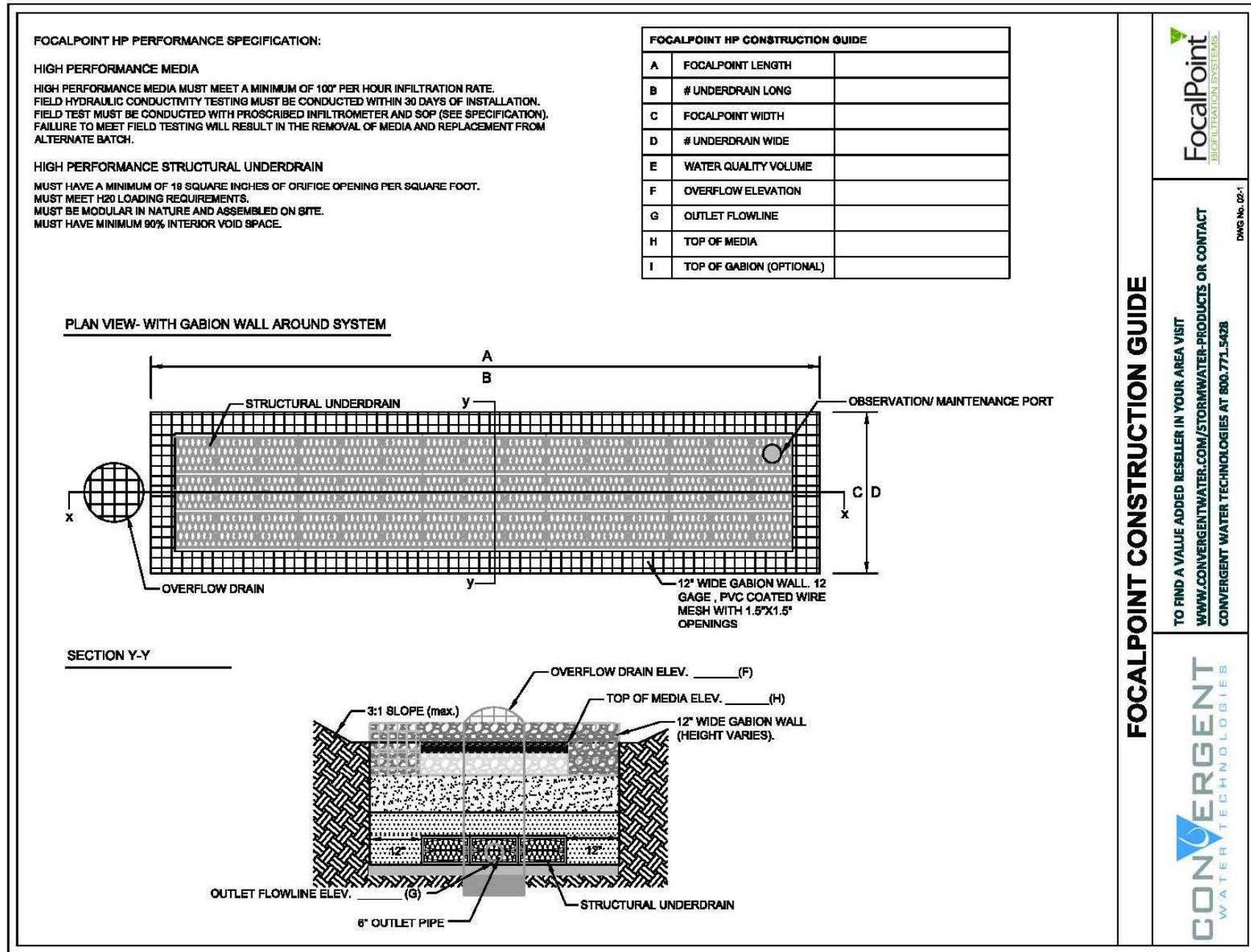
File: H:\Clients\Salem\CommercialSt_Grant\CAD\Commercial St Details\overNotes.dwg



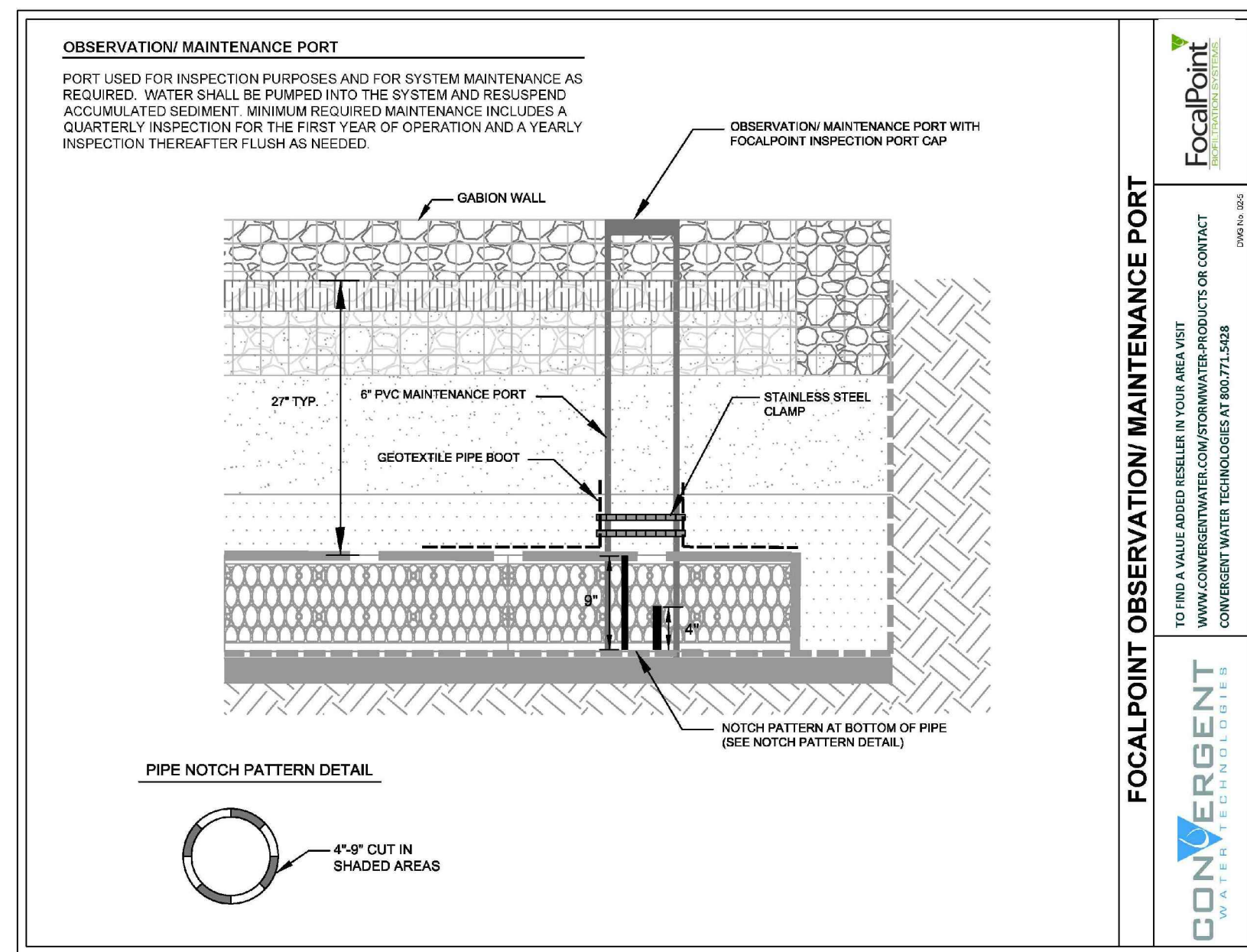
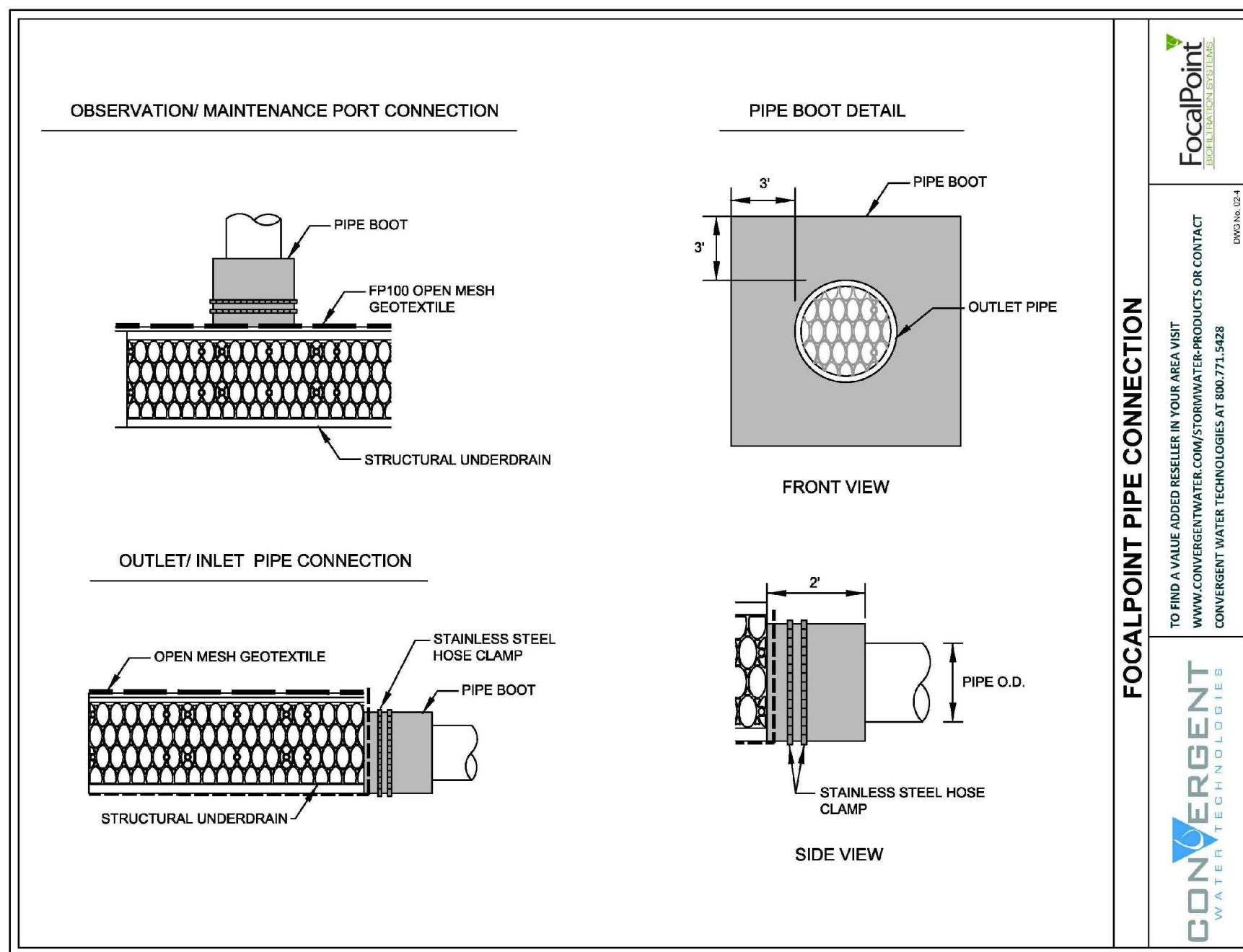
New England Civil Engineering Corp.

120 Washington Street
SALEM, MASSACHUSETTS

Sheet
D-2



FOCAL POINT SYSTEM DETAILS NOT TO SCALE



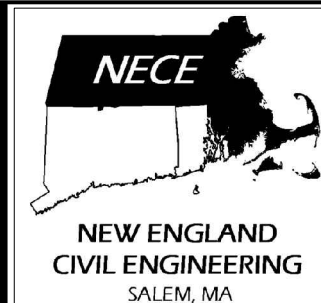
Client
CITY OF SALEM, MASSACHUSETTS

Project
COMMERCIAL STREET RETROFIT PROJECT

DETAILS

Scale	N.T.S.		
Date	6/13/2013		
Job	Commercial Street		
Designed by	WMR		
Drawn by	DJW		
Checked by	WMR	No.	Description
Approved by	WMR	Date	

File: H:\Clients\Salem\CommercialSt_Grant\CAD\Commercial St Details\coverNotes.dwg



New England Civil Engineering Corp.

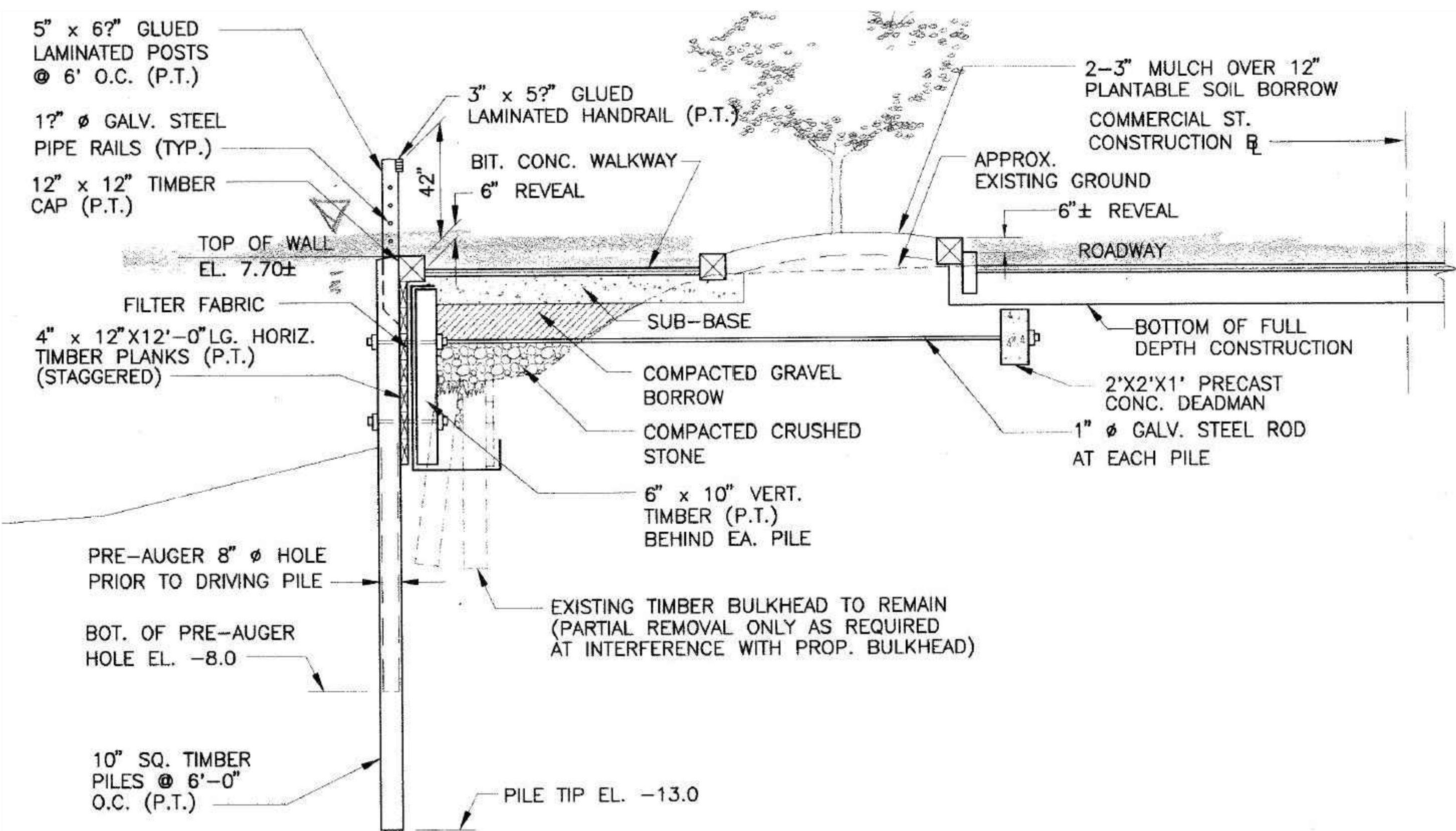
120 Washington Street
SALEM, MASSACHUSETTS

Sheet

D-3

EXISTING
PLANTING BED
CONDITIONS

DETAIL FROM DESIGN PLANS
MASSACHUSETTS HIGHWAY
DEPARTMENT:
WETLAND MITIGATION PLANS NORTH
RIVER CANAL 1996



PROPOSED PLANTING
BED MODIFICATION
TO RAIN GARDEN

