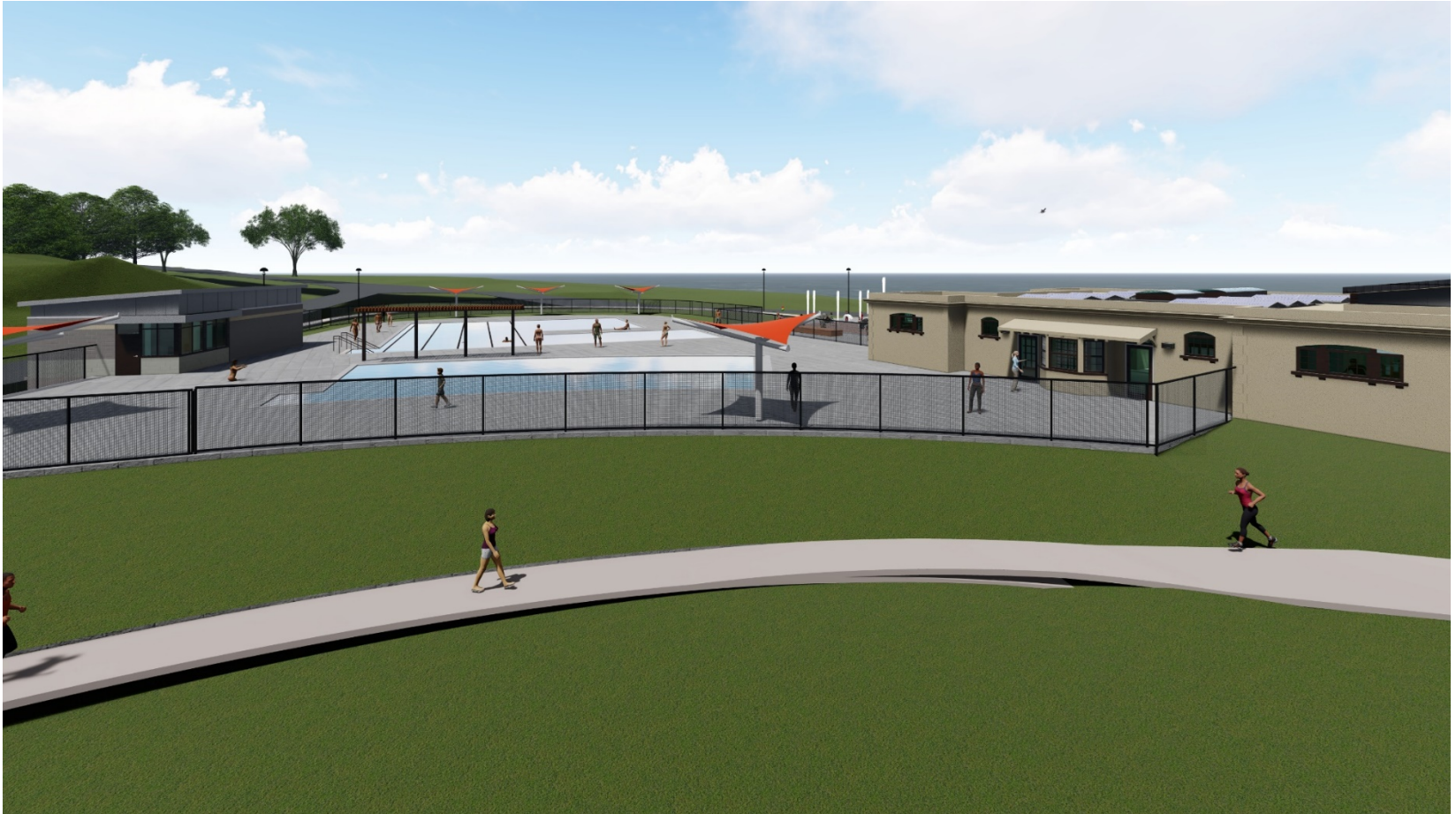


# Forest River Park Pool



Recreation Commission Meeting  
August 11, 2020



# Agenda

Introduction

Project Status

Site Plan

Bathhouse Design

Filter Building Design

Pool Design

Questions



# Update

- Construction Documents Phase Beginning
- Chapter 91 Permitting in Process; Public Comment Period began on August 10<sup>th</sup>.
- Army Corp and CZM Permitting can now begin
- Conservation Commission Order of Conditions Issued
- Construction Manager Engaged- Colantonio, Inc.
- Zero net energy and SITESv2 Project Goals
- Anticipate Early Site and Pool Package for Construction
- RFP being Prepared by Salem Public Art

The background of the slide is a close-up, high-resolution image of water ripples. The light reflects off the crests of the waves, creating a complex, organic pattern of bright white and light blue lines against a darker blue background. The overall effect is a sense of movement and fluidity.

# Current Design



# Site Plan





# Site Plan

### LEGEND

LAWN SEED

HIGH MARSH

COASTAL BANK

RAIN GARDEN SEED MIX

### PLANT SCHEDULE

QTY	SYMBOL	SCIENTIFIC NAME	COMMON NAME	MAX. HT.	NOTES
<b>TREES</b>					
7	AR	ACER RUBRUM	RED MAPLE	2.5-3' CAL	
9	AC	AMELANCHIER CANADENSIS	SHYLBERRY	6' HT	
8	BP	BETULA POPULIFOLIA	GRAY BIRCH / WHITESPIRE	8-10' HT	B&B
5	JV	JUNIPERUS VIRGINIANA	EASTERN RED CEDAR	6' HT	
6	NS	NYSSA SILVATICA	BLACK TUPEDO	2.5-3' CAL	
3	PR	PRINUS ROSEA	PITCH PINE	5' HT	
5	QB	QUERCUS BICOLOR	SWAMP WHITE OAK	2.5-3' CAL	B&B
<b>SHRUBS</b>					
		ARCTOSTAPHYLOS UVA-URSI	BEARBERRY	6"-1' HT	
		ARONIA MELANOCARPA	BLACK CHOREBERRY	4-6' HT	
		ILEX GLABRA	INKBERRY	5-8' HT	
		JUNIPERUS COMMUNIS	COMMON JUNIPER	4' HT	
		PRUNUS MARTIMA	BEACH PLUM	4-7' HT	
<b>HIGH MARSH</b>					
		DISTICHIS SPICATA	SPIKE GRASS	1-3' HT	12" O.C. PLUG
		JUNCUS GERARDI	BLACK GRASS	1-2' HT	12" O.C. PLUG
		SPARTINA PATENS	SALTMEADOW COROGRASS	1-3' HT	12" O.C. PLUG
<b>COASTAL BANK</b>					
		IVA FRUTESCENS	MARSH ELDER	3-8' HT	18" O.C. #1
		LIMNOLUN CAROLINIANUM	SEA LAVENDER	1-2' HT	12" O.C. PLUG
		PANICUM VIRGATUM	SWITCHGRASS	3-6' HT	12" O.C. PLUG
		SOLIDAGO SEMPERPARENS	SEASIDE GOLDENROD	3-5' HT	12" O.C. PLUG
		SPARTINA PATENS	SALTMEADOW COROGRASS	1-3' HT	12" O.C. PLUG

PLANT SCHEDULE

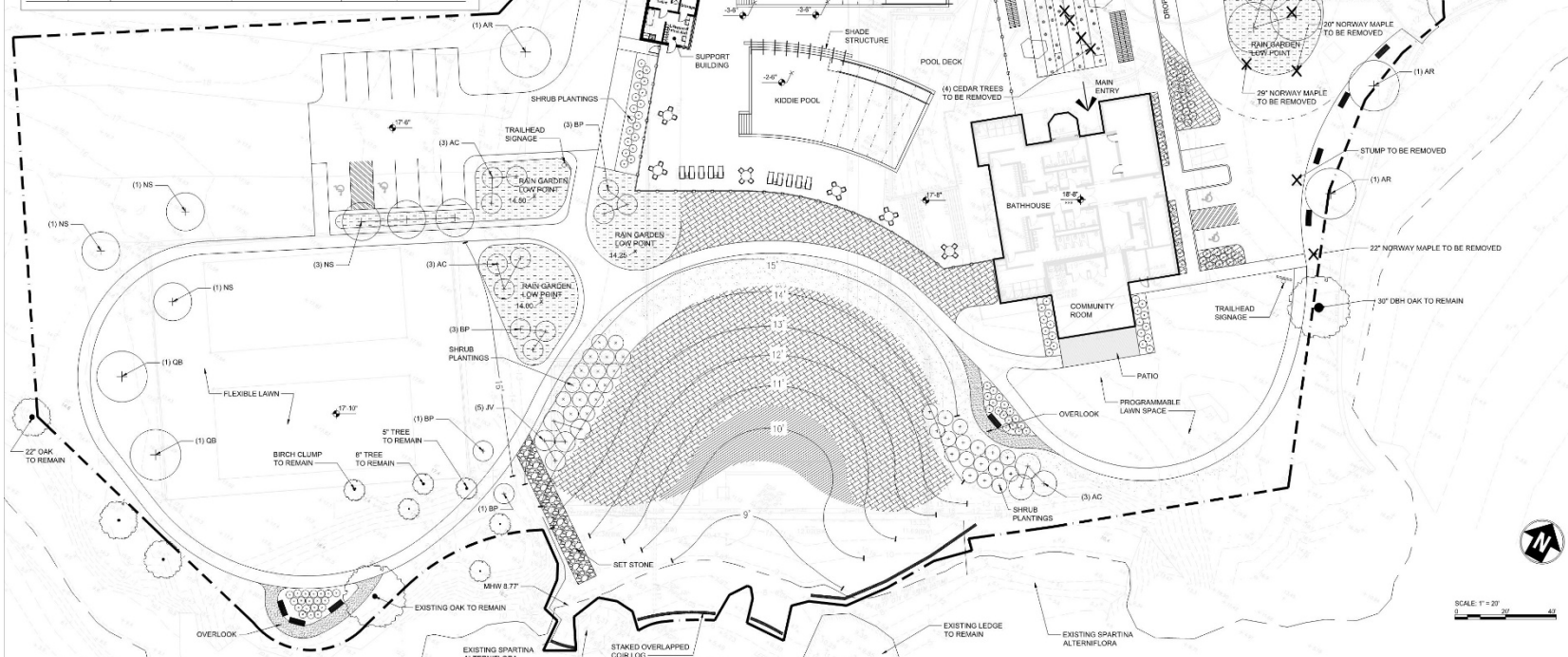
QTY	SYMBOL	SCIENTIFIC NAME	COMMON NAME	MAX. HT	NOTES
-----	--------	-----------------	-------------	---------	-------

7	AR	ACER RUBRUM	RED MAPLE	2.5-3' CAL	
9	AC	AMELANCHIER CANADENSIS	SEMOLEBERRY	6' HI	
8	BP	BETULA POPULIFOLIA	GRAY BIRCH 'WHITESPIRE'	8-10' HT	B&B
5	JV	JUNIPERUS VIRGINIANA	EASTERN RED CEDAR	6' HT	
6	NS	NYSSA SYLVESTICA	BLACK TUPELO	2.5-3' CAL	
3	PR	PINUS RIGIDA	PITCH PINE	6-5' HT	
5	OB	QUERCUS BICOLOR	SWAMP WHITE OAK	2.5-3' CAL	B&D


	ARCTOSTAPHYLOS UVA-URSI	BEARBERRY	6"-1' HT
	ARONIA MELANOCARPA	BLACK CHONEBERRY	4-6' HT
	ILEX GLABRA	INKBERRY	5-8' HT
	JUNIPERUS COMMUNIS	COMMON JUNIPER	4' HT
	PRUNUS MARITIMA	BEACH PLUM	4-7' HT

	DISTICHILIS SPICATA	SPIKE GRASS	1-3' HT	12" O.C. PLUG
	JUNCUS GERARDII	BLACK GRASS	1-2' HT	12" O.C. PLUG
	SPARTINA PATENS	SALTMADOW COROGRASS	1-3' HT	12" O.C. PLUG

	IVA FRUTESCENS	MARSH ELDER	3-8' HT	18" O.C. #1
	LYONILUM CAROLINIANUM	SEA LAVENDER	1-2' HT	12" O.C. PLUG
	PANICUM VIRGATUM	SWITCHGRASS	3-6' HT	12" O.C. PLUG
	SOLIDAGO SEMPERVIRENS	SEASIDE GOLDENROD	3-5' HT	12" O.C. PLUG
	SPARTINA PATENS	SALTMEADOW COROGRASS	1-3' HT	12" O.C. PLUG



SCALE: 1" = 20'

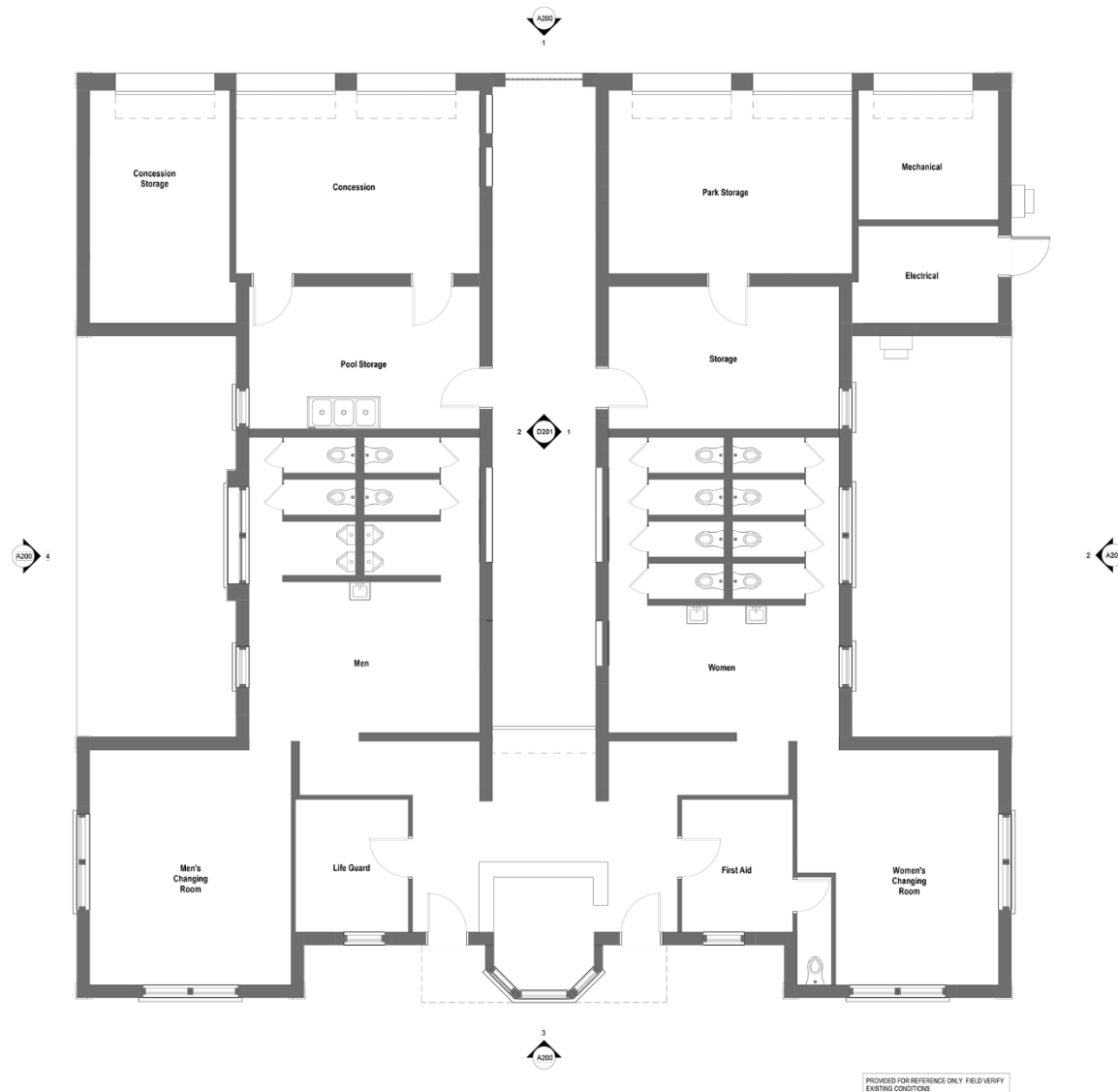
A horizontal graphic scale bar with alternating black and white segments. It is marked with '0' at the left end, '20' in the middle, and '40' at the right end.



# Shoreline

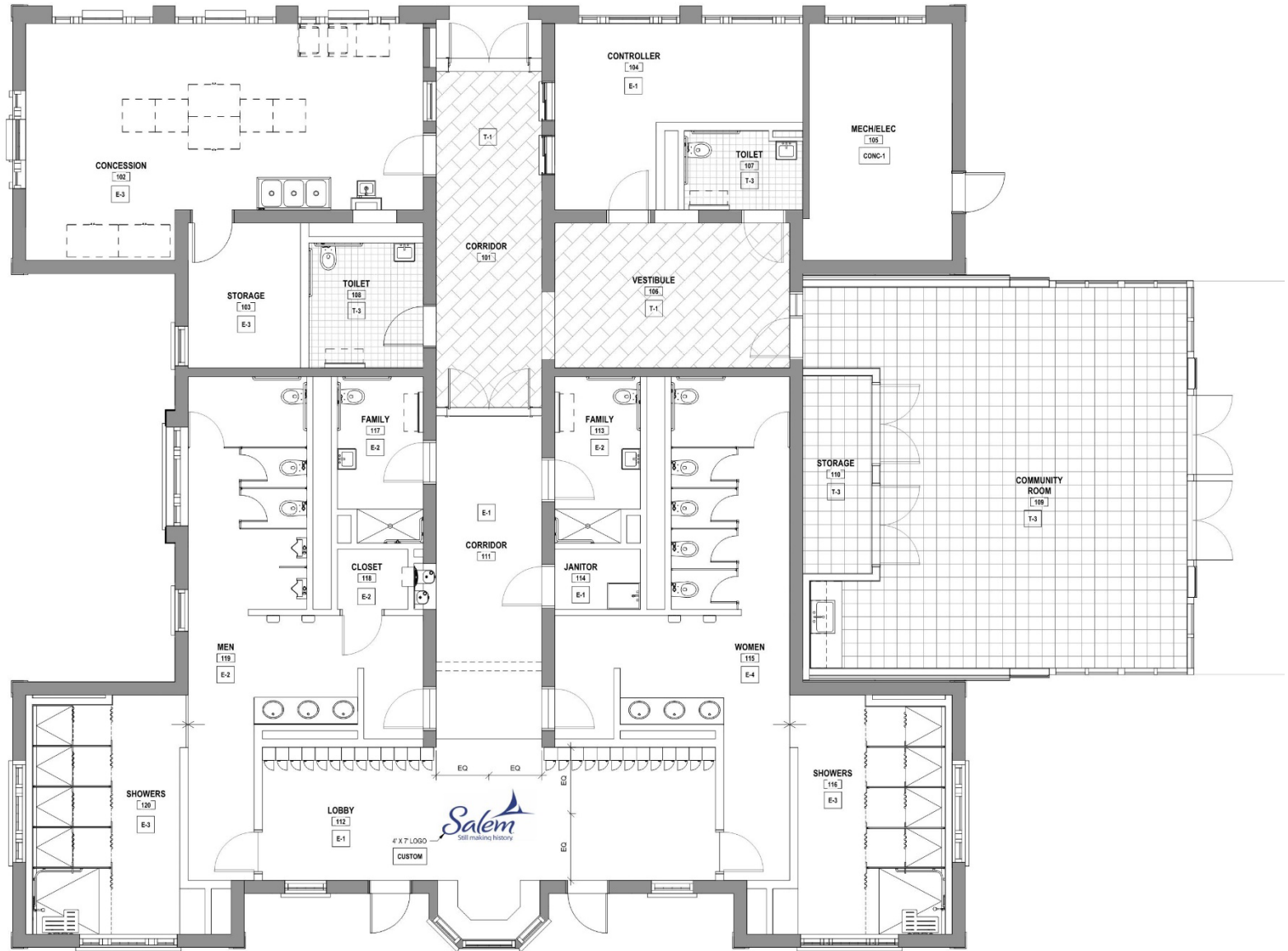


# Existing Bathhouse Floor Plan

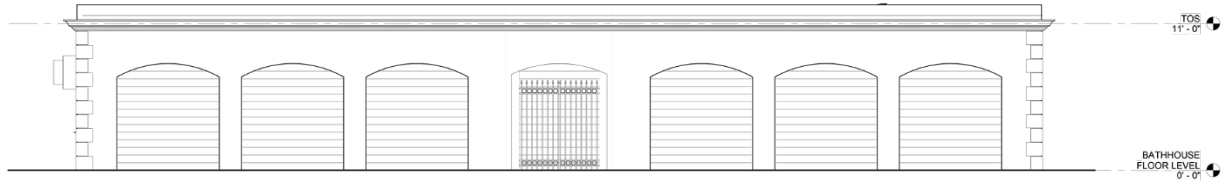




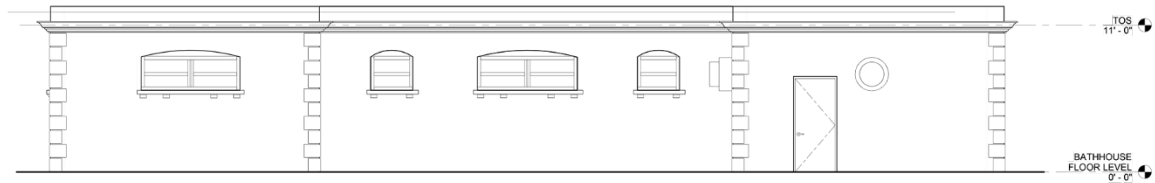
# Bathhouse Floor Plan



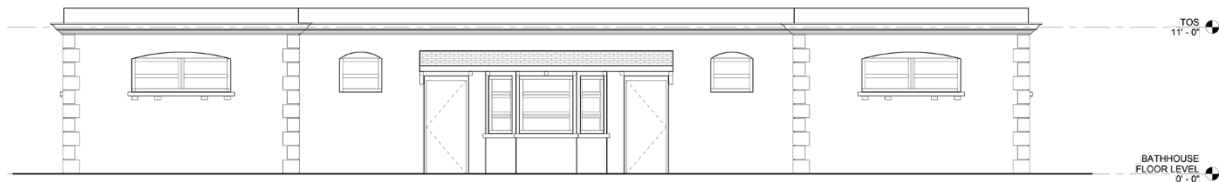
# Existing Bathhouse Elevations



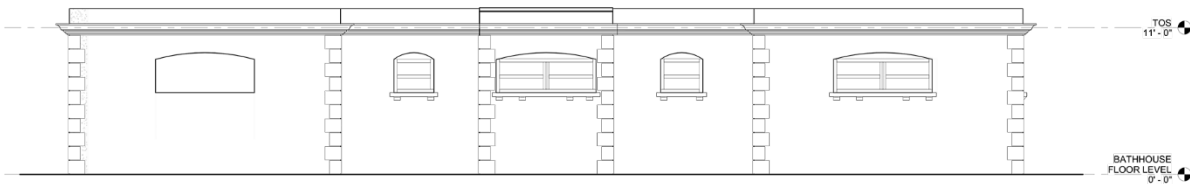
1 BATHHOUSE NORTH ELEVATION  
1/4" = 1'-0"



2 BATHHOUSE EAST ELEVATION  
1/4" = 1'-0"



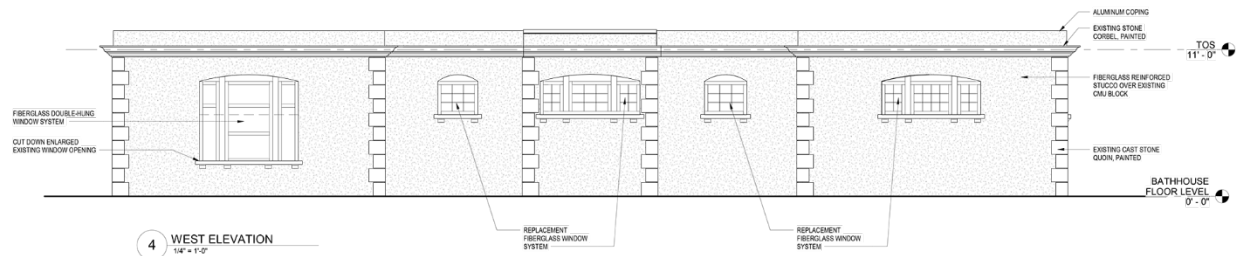
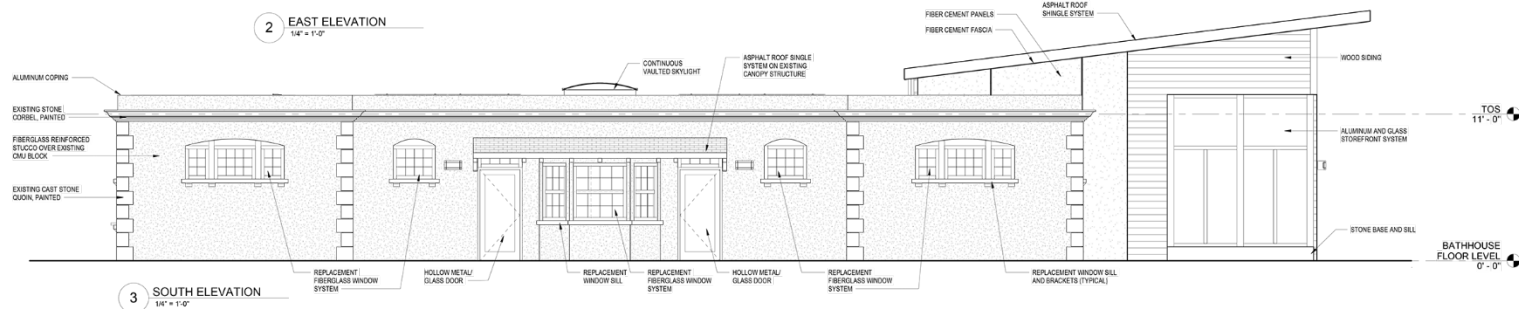
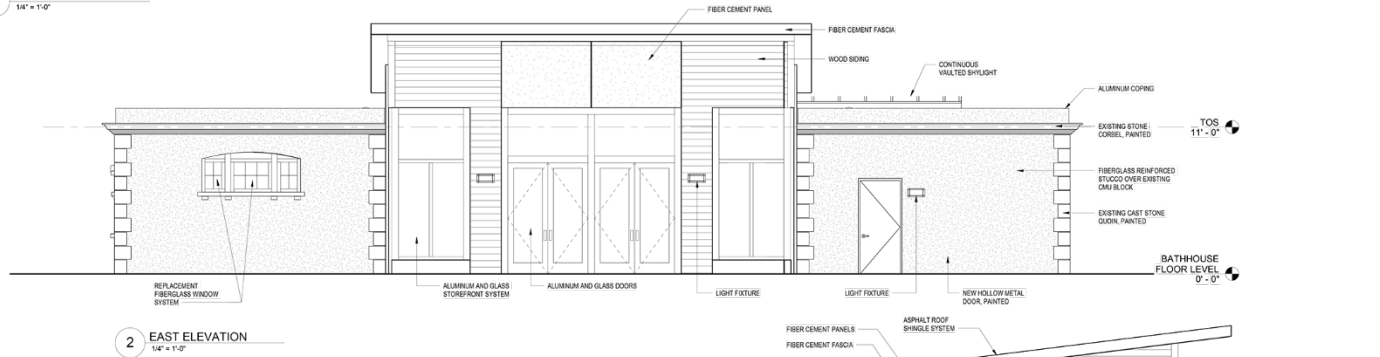
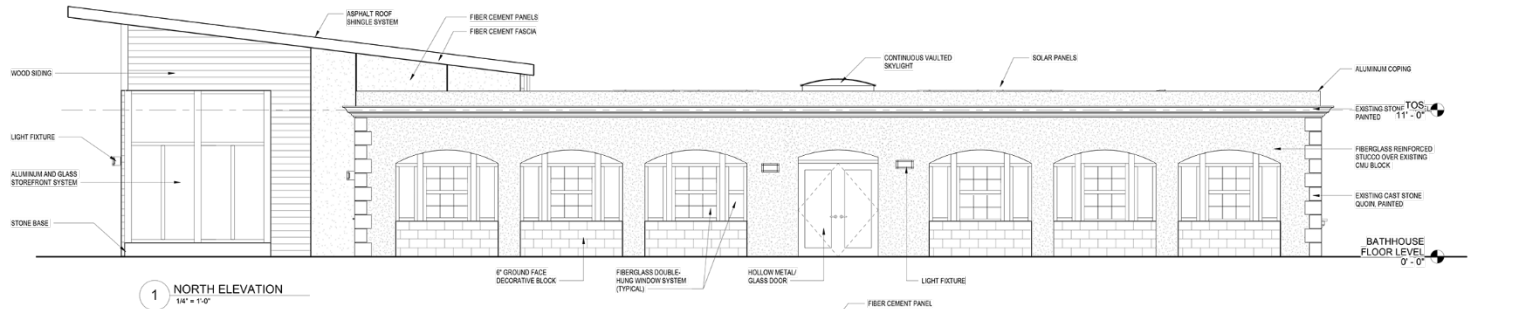
3 BATHHOUSE SOUTH ELEVATION  
1/4" = 1'-0"



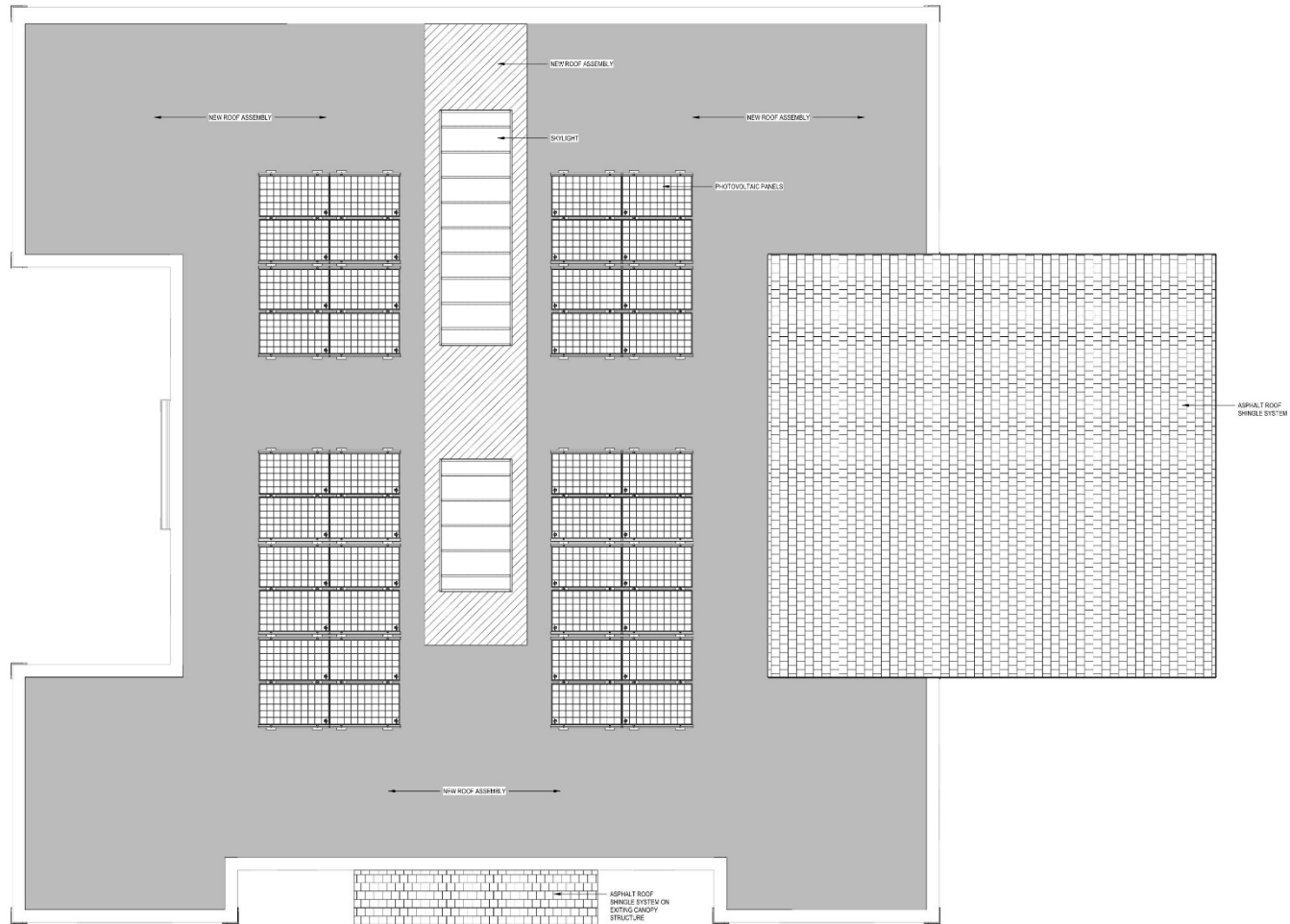
4 BATHHOUSE WEST ELEVATION  
1/4" = 1'-0"



# Exterior Elevations



# Solar Panels





# Bathhouse and Community Room



# Community Room





# Bathhouse and Community





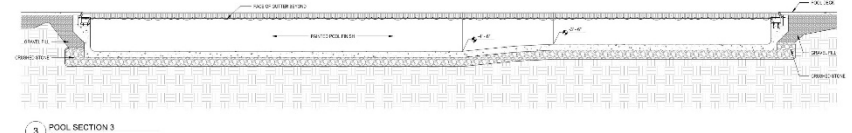
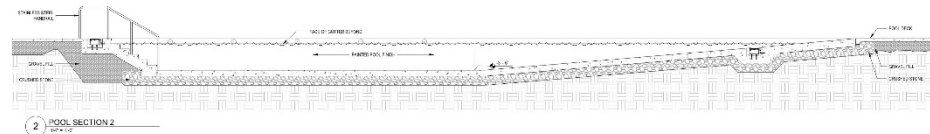
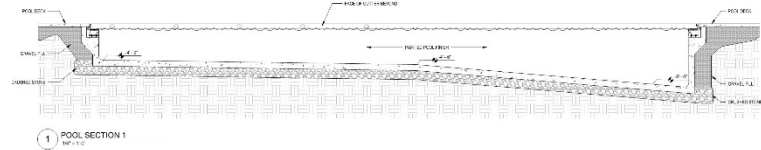
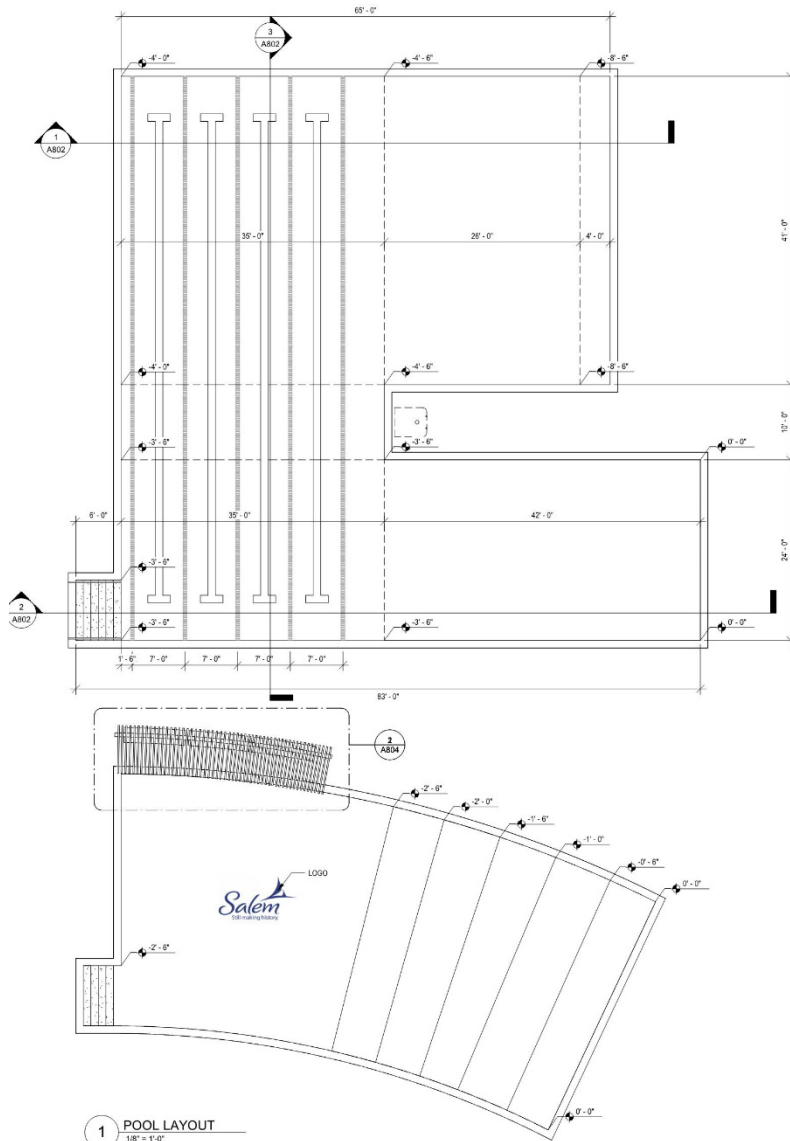
# Swimming Pools

## Wading Pool

Volume	31,000 gallons
Turnover rate	4 hours
Flow Rate	130 GPM
Pool Surface	2,260 SF
Surge Capacity	2,300 gallons

## Main Pool

Volume	141,000 gallons
Turnover rate	6 hours
Flow Rate	392 GPM
Pool Surface	4,910 SF
Surge Capacity	5,000 gallons



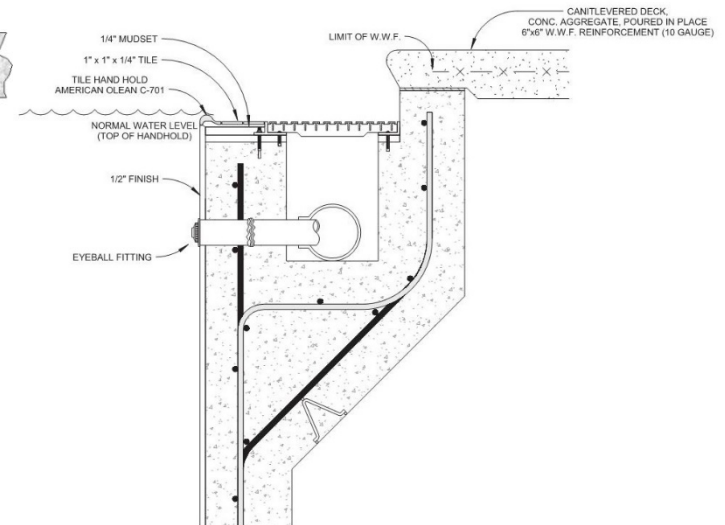
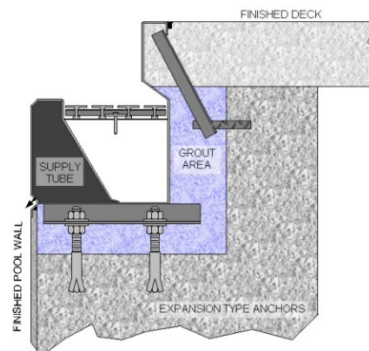
# Swimming Pool Construction



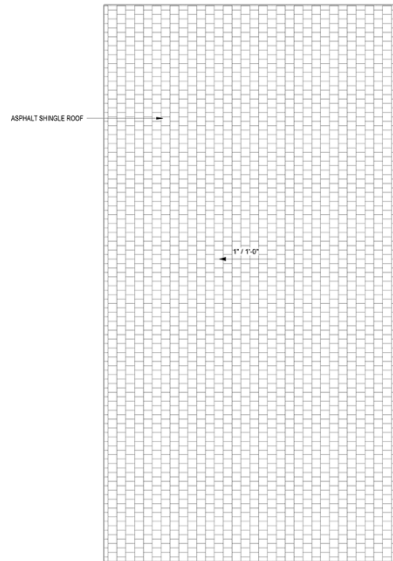
AQUATIC NEWS  
& REVIEW  
AQUATICNEWS.COM



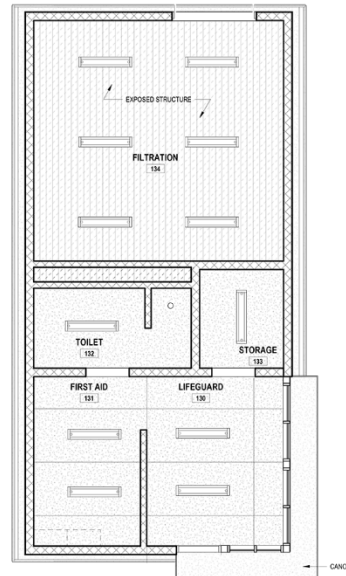
AQUATIC NEWS  
& REVIEW  
AQUATICNEWS.COM



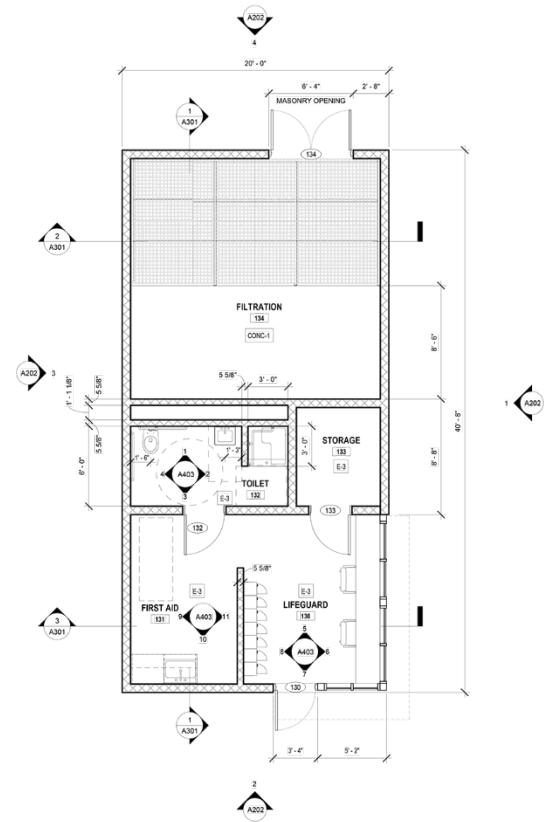
# Support Building Plans










1 SUPPORT BUILDING ROOF PLAN  
1/4" = 1'-0"



2 SUPPORT BUILDING RCP  
1/4" = 1'-0"

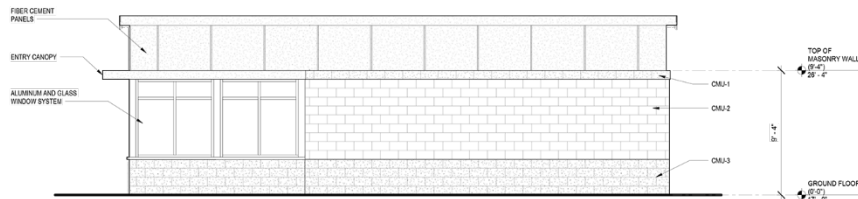


3 SUPPORT BUILDING FLOOR PLAN  
1/4" = 1'-0"

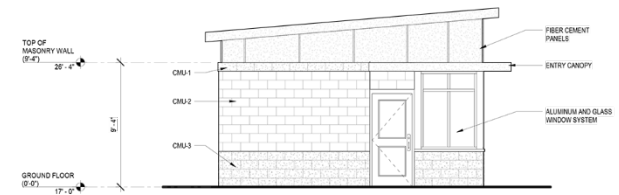
CEILING LEGEND		CEILING NOTES
	4" SURFACE MOUNTED LINEAR FIXTURE	EXPOSED STRUCTURE, PAINTED  GYPSUM WALL BOARD CEILING AND/OR SOFFIT, PAINTED  PAINTED MEDIUM DENSITY OVERLAY PANEL (MDO)
	4" PENDANT FIXTURE	
	SUPPLY DIFFUSER	
	RETURN DIFFUSER	
	ALIGN FIXTURES, DEVICES, DIFFUSERS, EQUIPMENT AS SHOWN	
	EXIT SIGN	
	SMOKE DETECTOR - SEE ELECTRICAL DRAWINGS. CENTER ON CEILING TILE UNLESS OTHERWISE NOTED	1. MECHANICAL AND ELECTRICAL ITEMS ARE SHOWN FOR LOCATION AND COORDINATION PURPOSE. 2. REFER TO MEP PLANS FOR SPECIFICS FOR EQUIPMENT TYPES. 3. CENTER FIXTURE ON TILE UNLESS OTHERWISE NOTED. 4. PAINT ALL MDO CEILINGS AND SOFFITS. 5. ALL SPRINKLER HEADS, OCCUPANCY SENSORS, SMOKE DETECTORS, DIFFUSERS, DEVICES AND CEILING MOUNTED HORN STROBES SHALL ALIGN WITH LIGHT THE CENTER OF THE FIXTURES. 6. ALL EXIT SIGNS SHALL BE CENTERED ON THE WALL OPENING OR DOOR, UNLESS OTHERWISE NOTED.



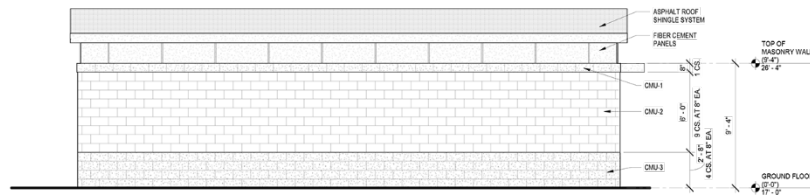
# Support Building



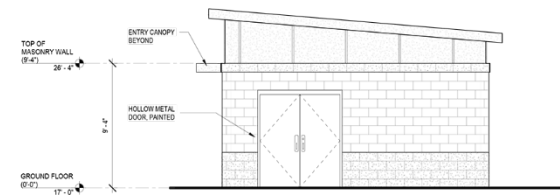
1 SUPPORT BUILDING NORTH ELEVATION  
1/4" = 1'-0"



2 SUPPORT BUILDING EAST ELEVATION  
1/4" = 1'-0"



3 SUPPORT BUILDING SOUTH ELEVATION  
1/4" = 1'-0"



4 SUPPORT BUILDING WEST ELEVATION  
1/4" = 1'-0"

# Pool Area





# Main Entry





The background of the slide is a close-up, high-resolution image of water ripples. The light reflects off the crests of the waves, creating a complex, organic pattern of bright white and light blue lines against a darker blue background. The overall effect is a textured, shimmering surface.

# Questions