

ADDENDUM #1
to
CONTRACT 24-18-TAP

for the

**FORT AVENUE AT WINTER ISLAND ROAD, COLUMBUS SQUARE, COLUMBUS
AVENUE, AND MEMORIAL DRIVE INTERSECTION IMPROVEMENTS**

in
SALEM, MA

Tuesday, September 19, 2023

NOTICE TO BIDDERS

The attention of all bidders submitting proposals for the “Fort Avenue at Winter Island Road, Columbus Square, Columbus Avenue, and Memorial Drive Intersection Improvements”, Salem, MA is called to the following Addenda to the printed plans and specifications. The items set forth herein, whether of omission, addition or substitution are to be included in, and form part of the plans and specifications of the above named project. All bidders must acknowledge receipt of this Addendum on the bid form. Failure to do so may be cause for rejection of the bid.

PART 1: PLAN CHANGES

1. The plans have been updated with additional information for clarification of proposed work. Any changes that have been made within the plans are identified with a revision cloud.

PART 2: REVISIONS TO TECHNICAL SPECIFICATIONS

1. Page 8 of the TECHNICAL SPECIFICATIONS:

Add the following sentence at the end of paragraph 2: Removal and resetting of boulders within 100 feet shall be incidental to this item.

PART 3: CLARIFICATIONS

1. On Drainage & Utility Plan No. 1, there is a segment of 12” perforated concrete pipe from DMH2 to DMH 3 identified as P2. The 12” perforated concrete pipe shall be paid for under item 241.12 12 Inch Reinforced Concrete Pipe Type III. The item shall include all materials and labor necessary to furnish and install the 12” perforated concrete pipe, as shown on the plan detail.

END OF ADDENDUM #1

FORT AVENUE AT WINTER ISLAND ROAD, COLUMBUS SQUARE, COLUMBUS AVENUE, AND MEMORIAL DRIVE IMPROVEMENTS

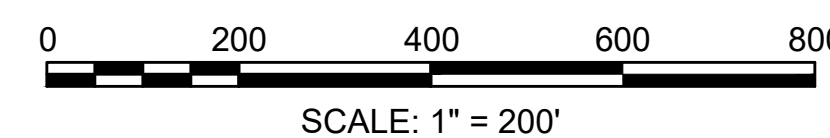
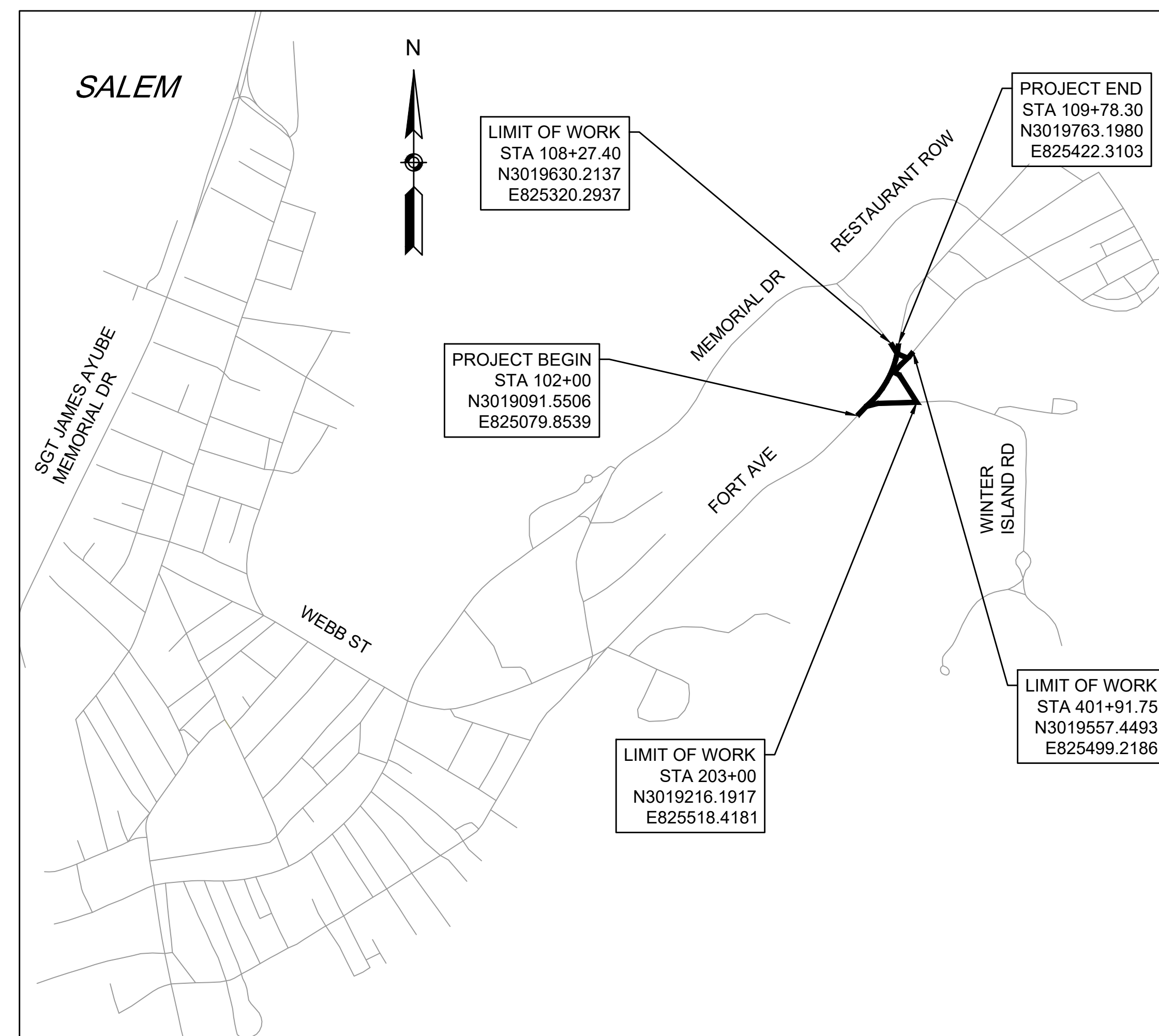
IN THE CITY OF
SALEM
 ESSEX COUNTY, MA

INDEX

SHEET NO.	DESCRIPTION
1	TITLE SHEET & INDEX
2	LEGEND & ABBREVIATIONS
3	GENERAL NOTES
4 - 5	TYPICAL SECTIONS
6 - 7	CONSTRUCTION PLAN
8 - 12	PROFILES
13 - 14	ALIGNMENT & CURB TIE PLAN
15 - 16	GRADING PLAN
17	GRADING DETAIL PLAN
18 - 19	DRAINAGE & UTILITY PLAN
20	LANDSCAPE PLAN
21 - 22	TRAFFIC SIGN & PAVEMENT MARKINGS PLAN
23	TRAFFIC SIGN SUMMARY
24 - 28	TEMPORARY TRAFFIC CONTROL PLAN
29 - 32	CONSTRUCTION DETAILS

STANDARDS

STANDARD	RELEASE DATE
MASSDOT STANDARD SPECIFICATIONS FOR HIGHWAYS AND BRIDGES	2023
MASSDOT SUPPLEMENTAL SPECIFICATIONS	JUNE 30, 2023
MASSDOT CONSTRUCTION STANDARD DETAILS	OCTOBER 2017
MASSDOT CONSTRUCTION AND TRAFFIC STANDARD DETAILS (AS RELATES TO TRAFFIC STANDARD DETAILS ONLY)	1996
MASSDOT OVERHEAD SIGNAL STRUCTURE AND FOUNDATION STANDARD DRAWINGS	2015
MASSDOT TRAFFIC MANAGEMENT PLANS AND DETAIL DRAWINGS	LATEST EDITION
MANUAL ON UNIFORM TRAFFIC CONTROL DEVICES FOR STREETS AND HIGHWAYS WITH MASSACHUSETTS AMENDMENTS	LATEST EDITION
MASSDOT STANDARD DRAWINGS FOR SIGNS AND SUPPORTS	1990
MASSDOT STANDARD DRAWINGS FOR TRAFFIC SIGNALS AND HIGHWAY LIGHTING	1968
AMERICAN STANDARD FOR NURSERY STOCK	LATEST EDITION



PHASE: FINAL DESIGN
 DATE: 8/29/2023

MCMAHON
 a Bowman company

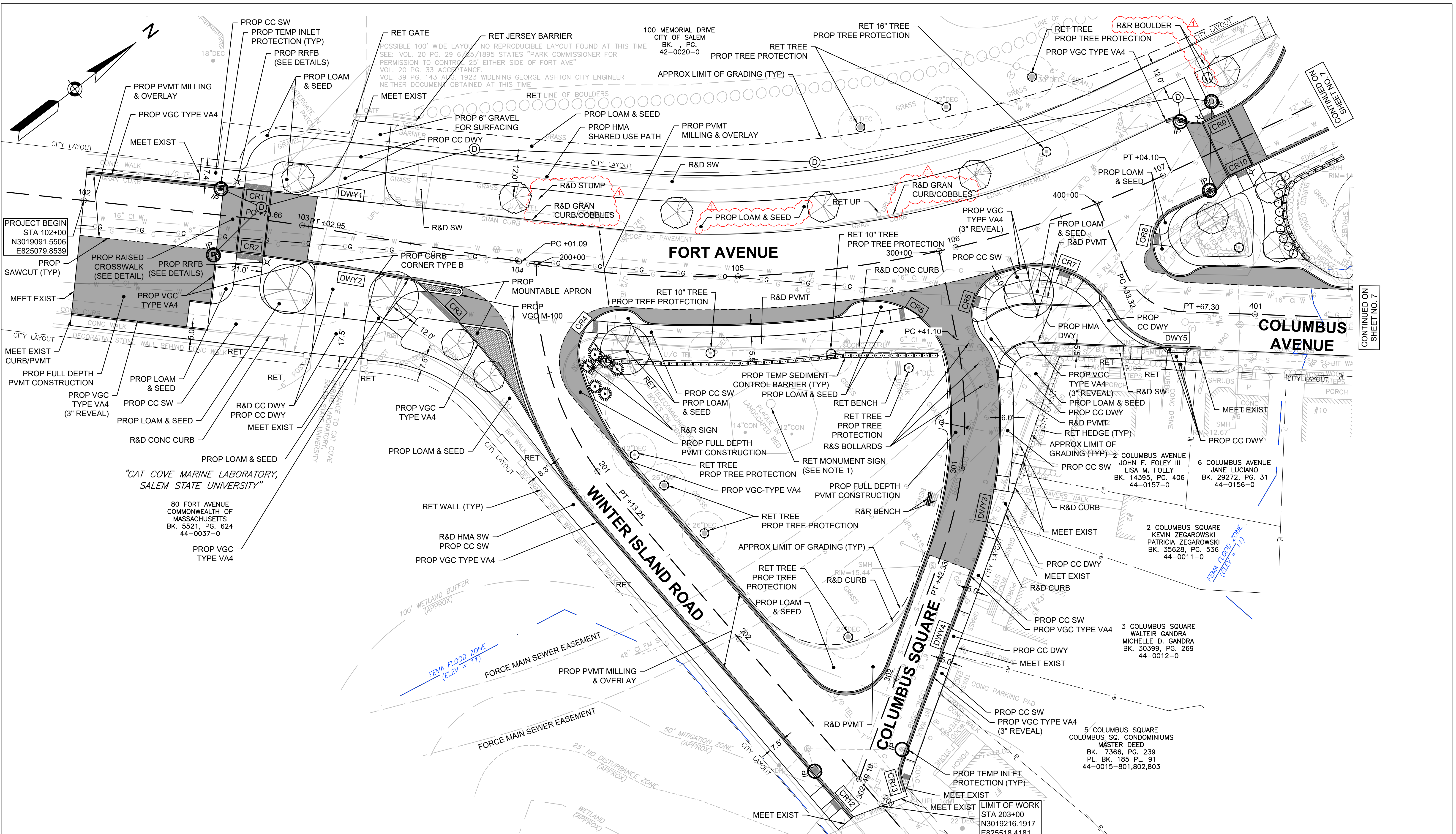
350 MYLES STANDISH BLVD SUITE 103 TAUNTON, MA
 TELE: (508) 823 - 2245
 FAX: (508) 823 - 2246

120 WATER ST 4TH FLOOR BOSTON, MA 02109
 TELE: (617) 556 - 0020
 FAX: (617) 556 - 0025

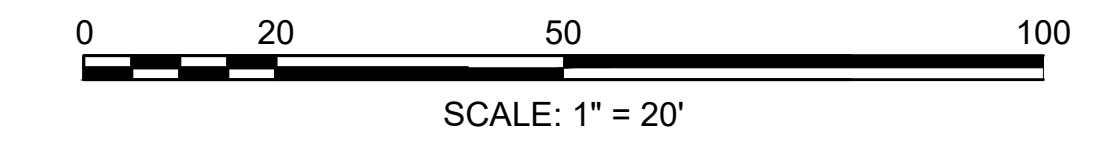
14 BREAKNECK HILL RD SUITE 201 LINCOLN, RI 02865
 TELE: (401) 648 - 7200

94 NORTH ELM STREET SUITE 210 WESTFIELD, MA
 TELE: (413) 875 - 8855

REV #	DATE
1	9/19/2023
SHEET #	TOTAL SHEETS
1	32



NOTES:
 1. SALEM WILLOWS PARK MONUMENT SIGN SHALL BE RETAINED.



MCMAHON
 a Bowman company

350 MYLES STANDISH BLVD SUITE 103 TAUNTON, MA 02109
 TELE: (508) 823-2245 FAX: (508) 823-2246

120 WATER ST 4TH FLOOR BOSTON, MA 02109
 TELE: (617) 556-0020 FAX: (617) 556-0025

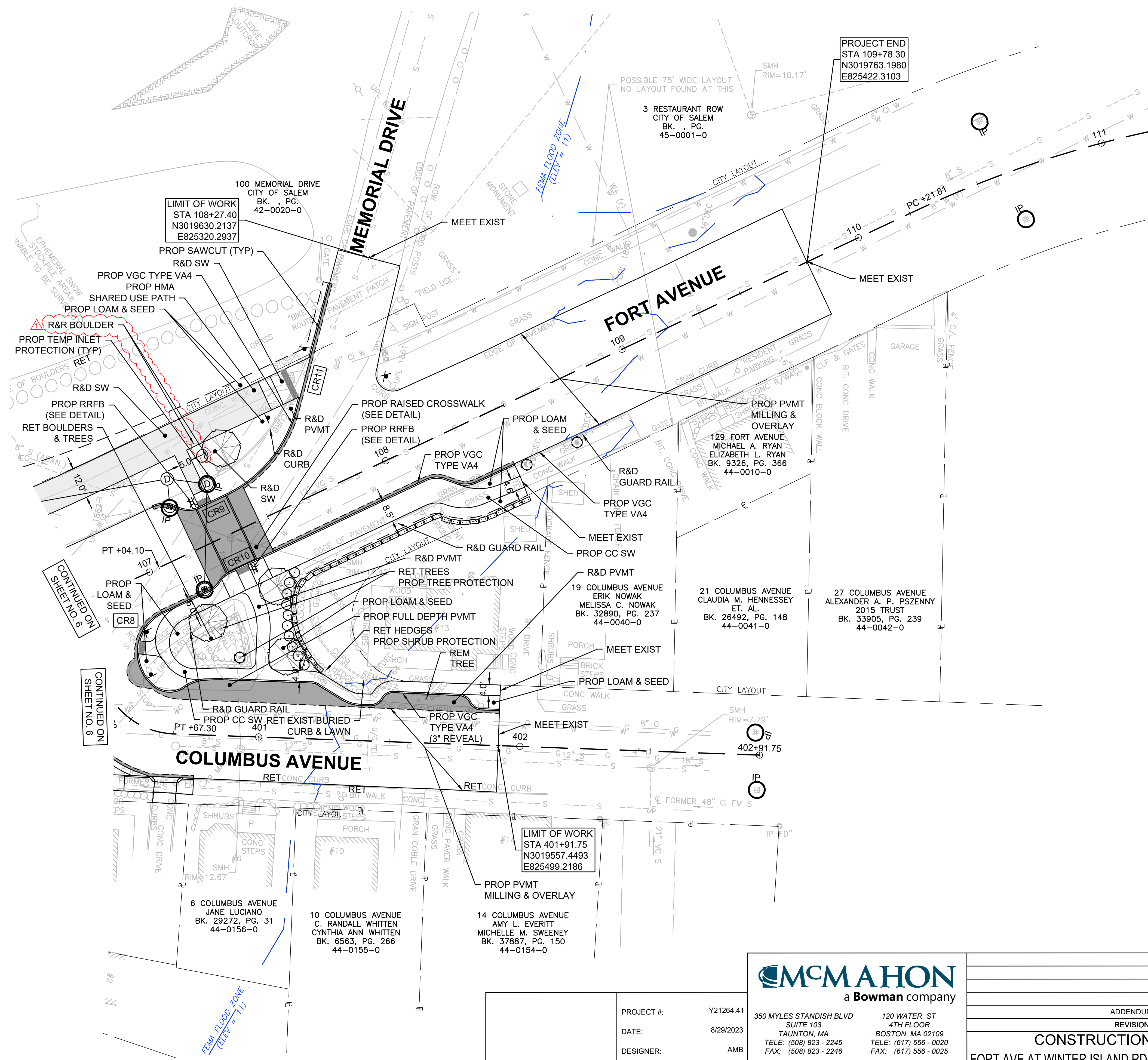
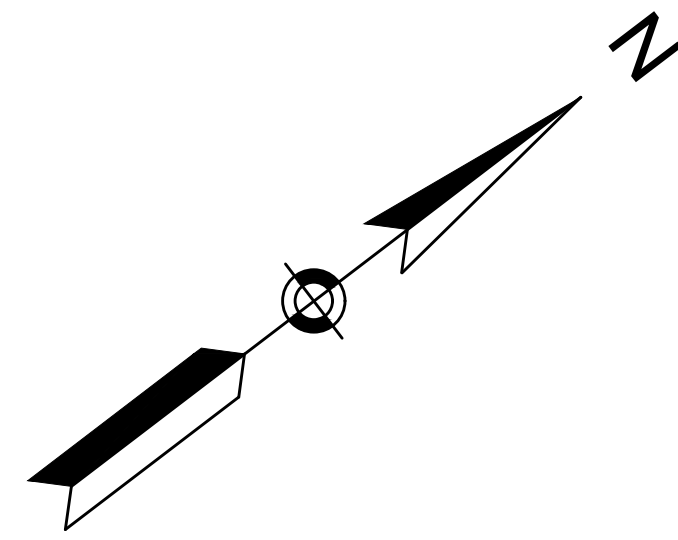
14 BREAKNECK HILL RD SUITE 201 LINCOLN, RI 02865
 TELE: (401) 648-7200

94 NORTH ELM STREET SUITE 210 WESTFIELD, MA
 TELE: (413) 875-8855

PROJECT #: Y21264.41
 DATE: 8/29/2023
 DESIGNER: AMB
 DRAFTER: ECR
 REVIEWER: PMF

ADDENDUM 1		△	09/19/23
REVISIONS		REV #	DATE
CONSTRUCTION PLAN NO. 1 FORT AVE AT WINTER ISLAND RD, COLUMBUS SQ, COLUMBUS AVE, AND MEMORIAL DR INTERSECTION IMPROVEMENTS SALEM, MA		SHEET #	TOTAL SHEETS
		6	32

CONTINUED ON SHEET NO. 7



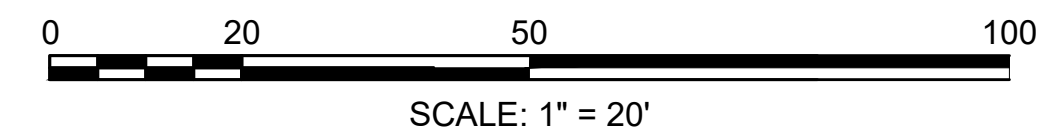
LIMIT OF WORK
 STA 108+27.40
 N3019630.2137
 E825320.2937

PROJECT END
 STA 109+78.30
 N3019763.1980
 E825422.3103

LIMIT OF WORK
 STA 401+91.75
 N3019557.4493
 E825499.2186

CONTINUED ON
 SHEET NO. 6

CONTINUED ON
 SHEET NO. 6



MCMAHON
 a Bowman company

350 MYLES STANDISH BLVD SUITE 103 TAUNTON, MA
 TELE: (508) 823-2245 FAX: (508) 823-2246

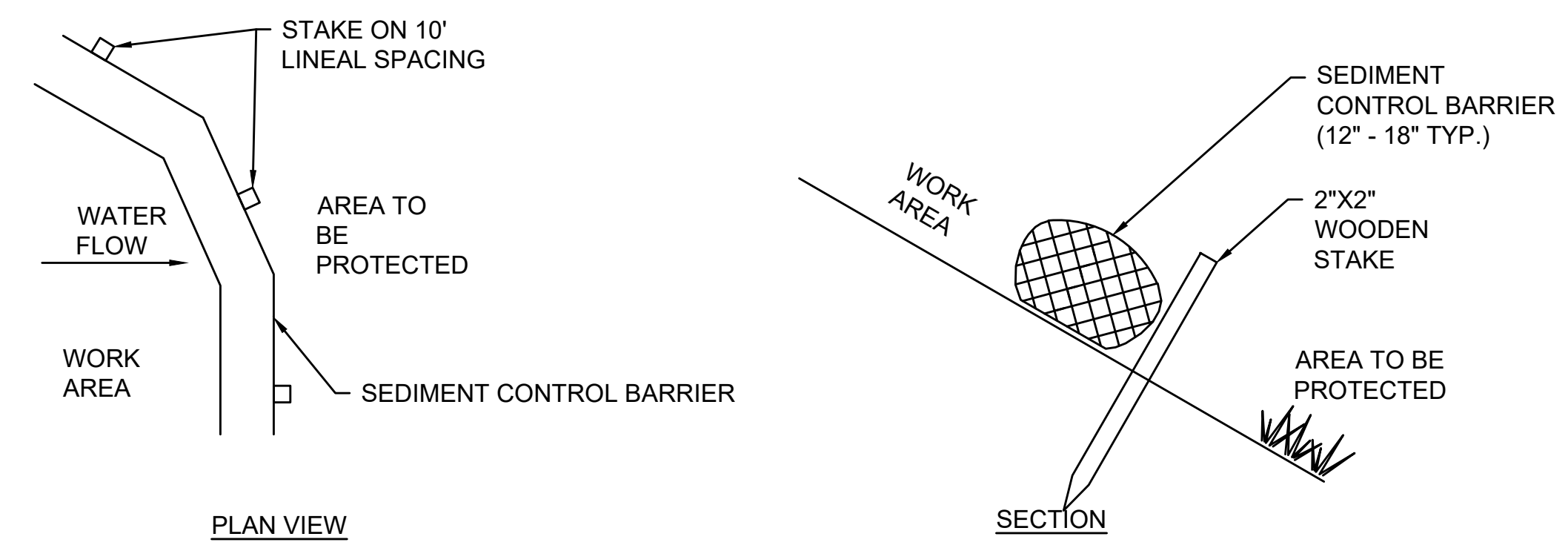
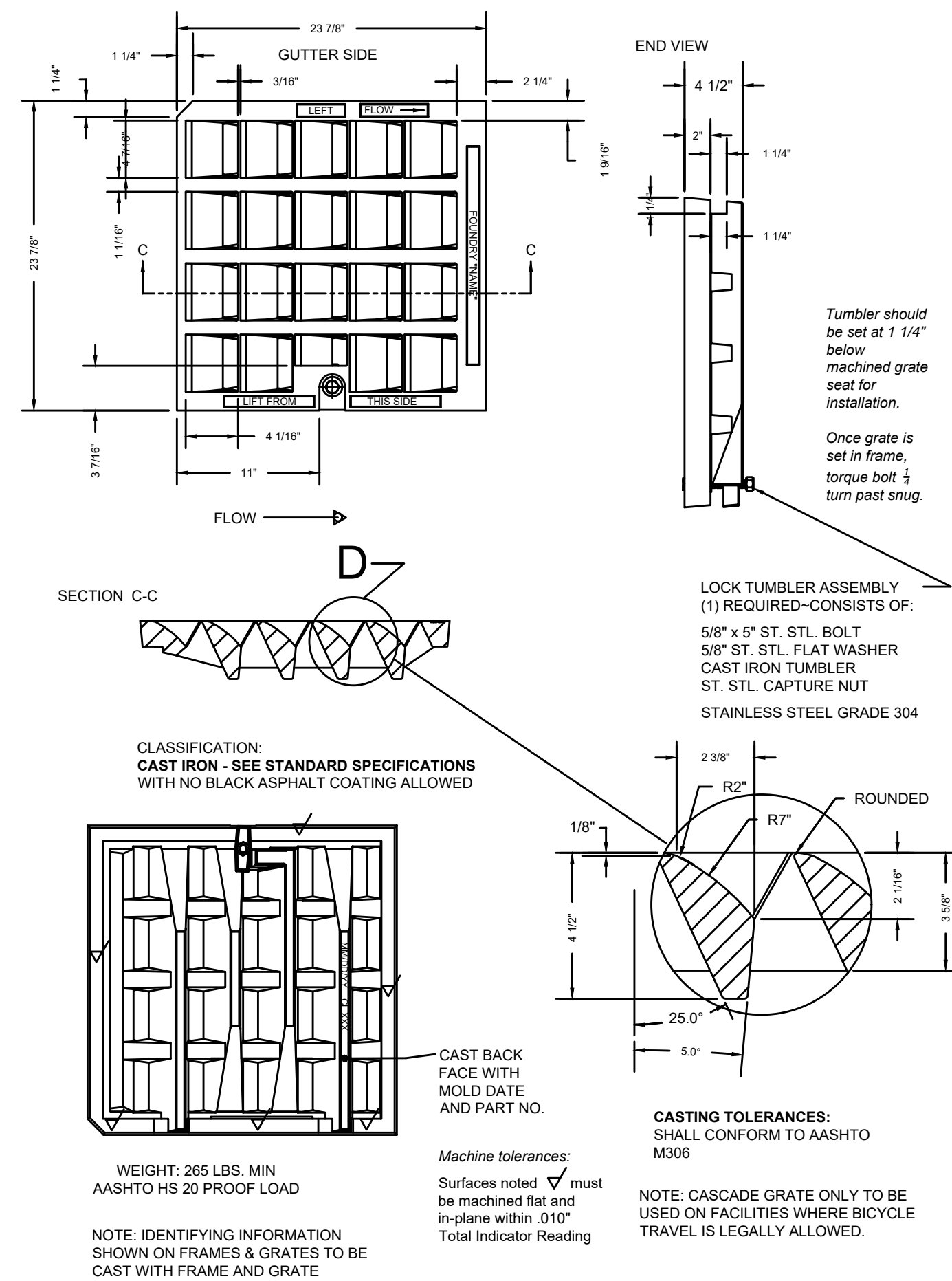
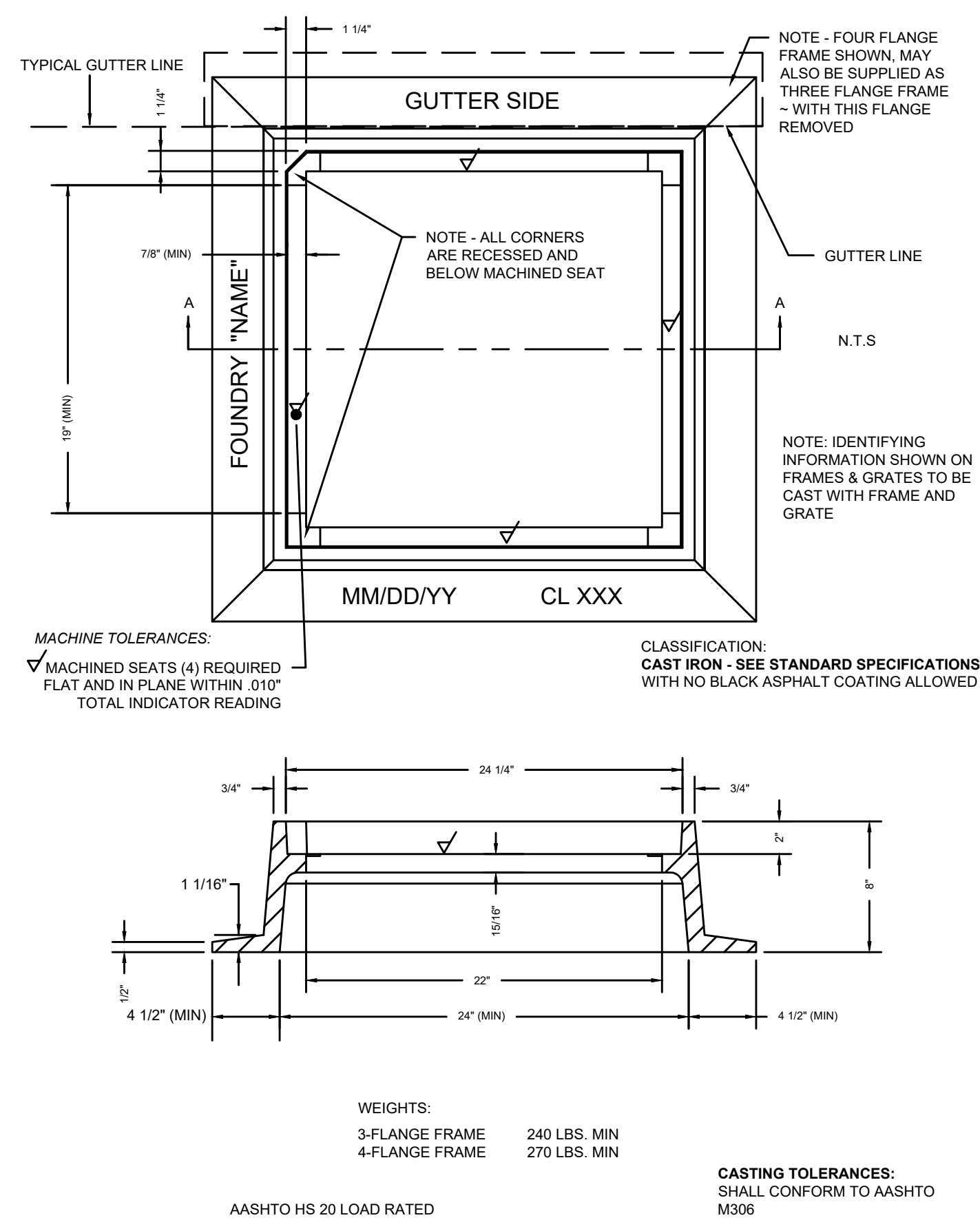
120 WATER ST 4TH FLOOR BOSTON, MA 02109
 TELE: (617) 556-0020 FAX: (617) 556-0025

14 BREAKNECK HILL RD SUITE 201 LINCOLN, RI 02865
 TELE: (401) 648-7200

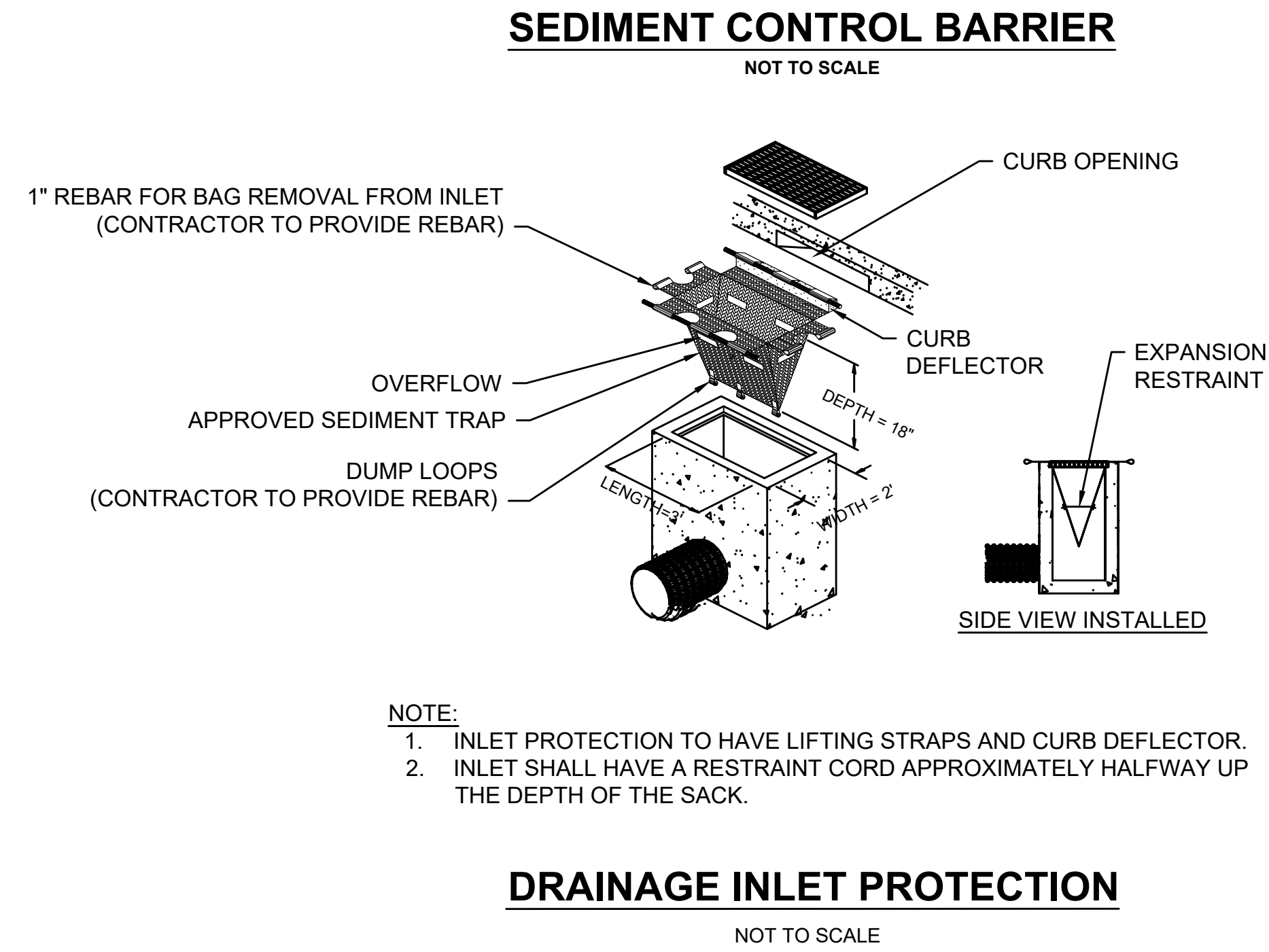
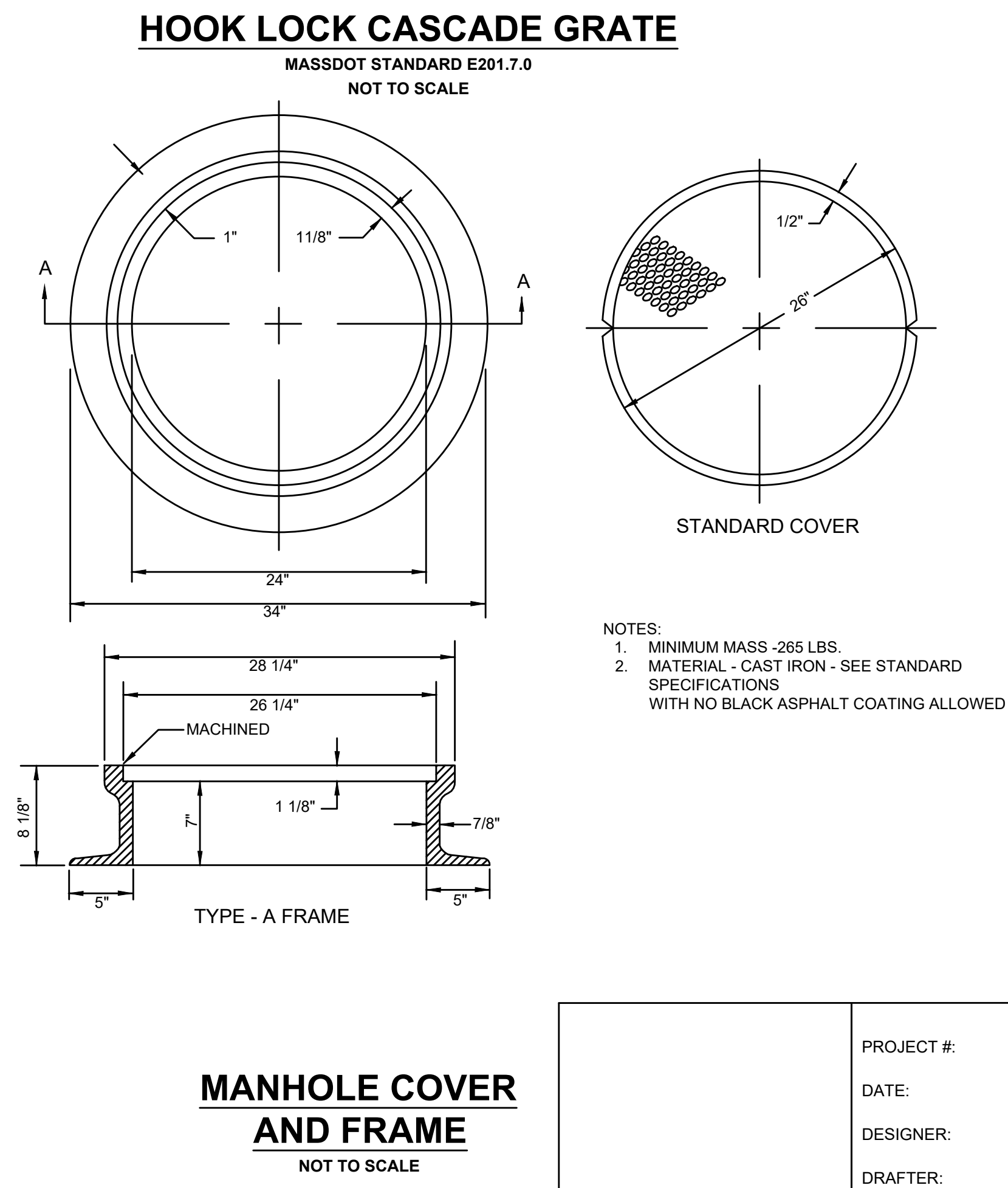
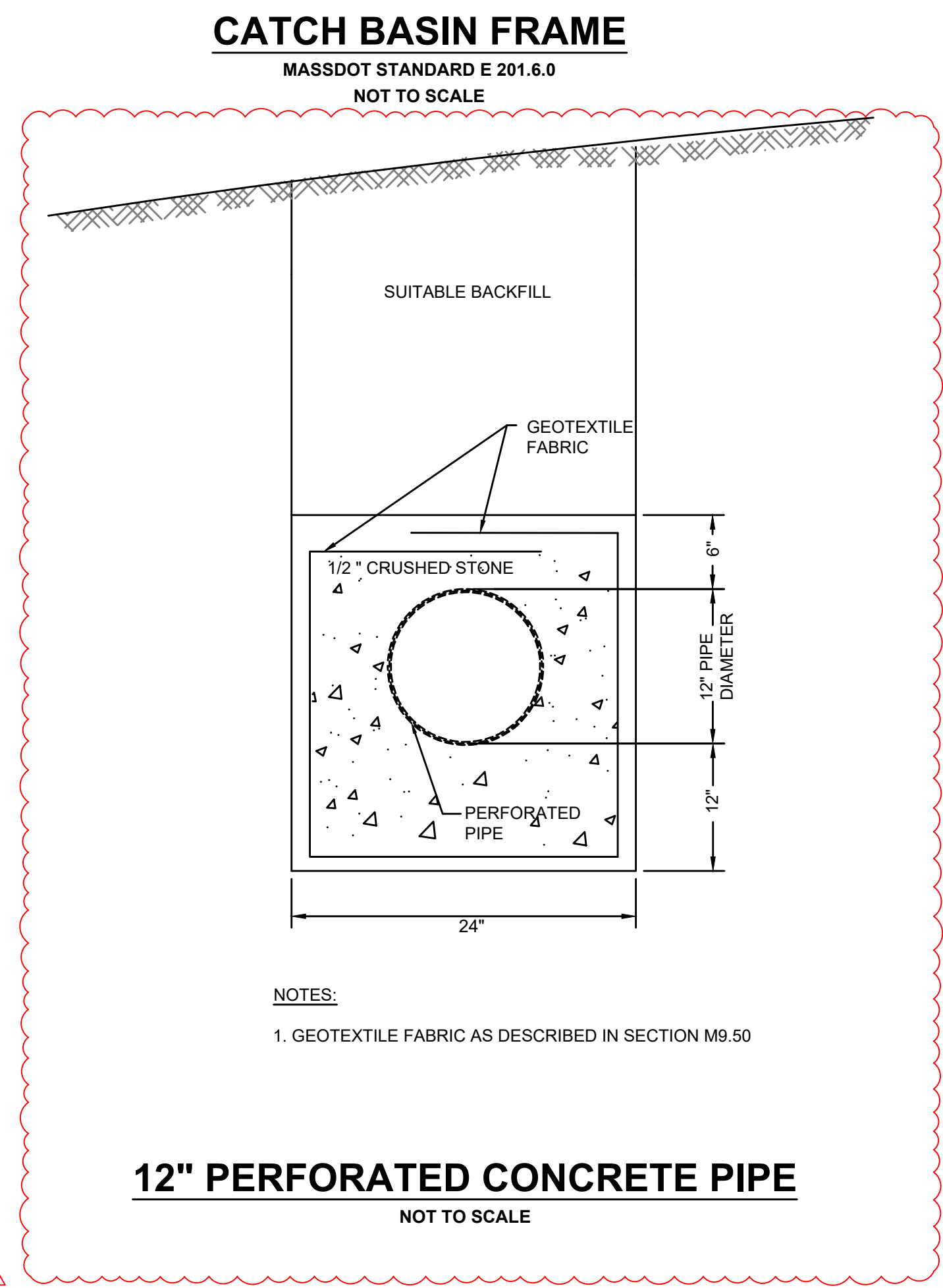
94 NORTH ELM STREET SUITE 210 WESTFIELD, MA
 TELE: (413) 875-8855

PROJECT #:	Y21264.41
DATE:	8/29/2023
DESIGNER:	AMB
DRAFTER:	ECR
REVIEWER:	PMF

ADDENDUM 1		△	09/19/23
REVISIONS		REV #	DATE
CONSTRUCTION PLAN NO. 2 FORT AVE AT WINTER ISLAND RD, COLUMBUS SQ, COLUMBUS AVE, AND MEMORIAL DR INTERSECTION IMPROVEMENTS SALEM, MA		SHEET #	TOTAL SHEETS
		7	32



- NOTES:**
1. SEDIMENT CONTROL BARRIER MANUFACTURER TO BE SILT SOXX OR ENGINEER APPROVED EQUAL.
 2. ALL MATERIAL TO MEET MANUFACTURER'S SPECIFICATIONS.
 3. SEDIMENT CONTROL BARRIER TO BE FILLED WITH MULCH COMPOST AND/OR WOODY MULCH PER MANUFACTURER'S REQUIREMENT.
 4. FOLLOWING CONSTRUCTION AND SITE STABILIZATION, COMPOST MATERIAL TO BE REMOVED OR DISPERSED ON SITE, AS APPROVED BY THE ENGINEER.



MCMAHON
a Bowman company

350 MYLES STANDISH BLVD SUITE 103 TAUNTON, MA 02109
TELE: (508) 823-2245 FAX: (508) 823-2246

120 WATER ST 4TH FLOOR BOSTON, MA 02109
TELE: (617) 556-0020 FAX: (617) 556-0025

14 BREAKNECK HILL RD SUITE 201 LINCOLN, RI 02865
TELE: (401) 648-7200

94 NORTH ELM STREET SUITE 210 WESTFIELD, MA
TELE: (413) 875-8855

ADDENDUM 1		△	09/19/23
REVISIONS		REV #	DATE
CONSTRUCTION DETAILS 4		SHEET #	TOTAL SHEETS
FORT AVE AT WINTER ISLAND RD, COLUMBUS SQ, COLUMBUS AVE, AND MEMORIAL DR INTERSECTION IMPROVEMENTS SALEM, MA		32	32

PROJECT #:	Y21264.41
DATE:	8/29/2023
DESIGNER:	AMB
DRAFTER:	MEK
REVIEWER:	PMF

ITEM 120.1

UNCLASSIFIED EXCAVATION

CUBIC YARD

The work under this item shall conform to the relevant requirements of Section 120 of the Standard Specifications and the following:

Unclassified excavation shall include removal and disposal of bricks, stumps, bollard/flex posts, and boulders. Removal and resetting of park bench shall be incidental to this item. Removal and resetting of boulders within 100 feet shall be incidental to this item.

METHOD OF MEASUREMENT AND BASIS OF PAYMENT

Item 120.1 will be measured and paid for payment by the cubic yard of Unclassified Excavation, complete in place. This includes all labor, materials, equipment, removal and disposal of materials and all incidental cost required to complete the work.