

City of Salem, MA

FORT AVENUE & COLUMBUS AVENUE TRAFFIC CALMING

PREPARED BY MCMAHON ASSOCIATES

Salem Willows Neighborhood Meeting

November 9, 2021



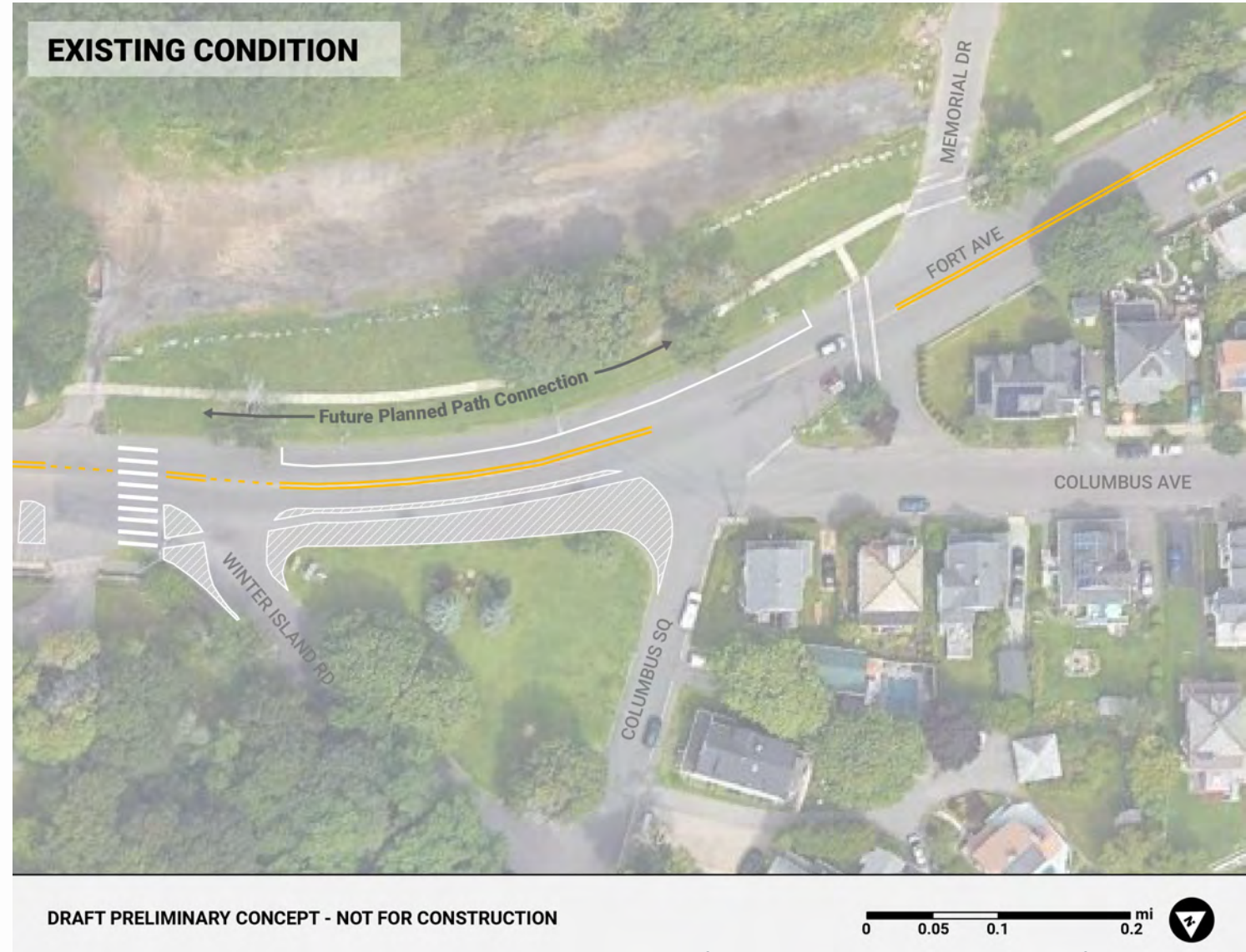
MEETING PURPOSE

- Provide background
- Overview of the project
- Obtain input on concept design



STUDY AREA AND SCOPE OF WORK

- Fort Avenue intersections:
 - Memorial Drive
 - Winter Island Road
 - Columbus Square and Columbus Avenue
- Scope includes:
 - Evaluation of crosswalk locations
 - Safety improvements
 - Engineered design (25% design)



BACKGROUND

- **City Plans & Policies**
 - Bicycle Master Plan – fully separated multi-use path
 - Complete Streets policy
 - Traffic Calming Program
- **Past Activities**
 - Traffic Calming application March 2019
 - Striping October 2019
 - Additional physical changes Summer 2020
 - Concepts December 2020



CONCEPT DESIGN DEVELOPMENT

- Survey Spring 2021
- Traffic Commission Coordination – July 2021
 - Meeting July 2021
 - Opportunity for comments & input
- Field Observations – July 2021
 - Sight distance and field conditions
 - Additional neighborhood input
- Concept Development – August/September 2021
- City staff and Councilor met with direct abutters



COMMENTS RECEIVED

- Safety concerns at Columbus Avenue/Columbus Square/Fort Avenue
- Location and design of crosswalks across Fort Avenue
- Speeding vehicles
- Confusion at Fort Ave intersection at Winter Island Road
- Parking concerns (especially summer)



CONCEPT DESIGN GUIDELINES

- Clarify roadway vehicular lanes and slow speeds at intersections
- Curb extensions to allow for safer crossing
- Sidewalk level multi-use path is grade separated from the street with the potential for a vegetated buffer
- On-street parking where possible
- Improve cross street intersections
- Columbus Square one-way to reduce the number of potential conflict points on Fort Avenue
- Modify parking spaces on the south end of the project area to improve safety
- Pedestrian crossing south of Winter Island Road shifted north in response to neighborhood requests



CONCEPT 1: NORTH CROSSING

Pros

- Better sight lines for northerly Fort Avenue crossing
- Improves connections to neighborhood sidewalks

Cons

- Greater impact to the Columbus Avenue / Fort Avenue island
- Multi-use path has four roadway crossings to get to and from Salem Willows Park



CONCEPT 2: MID-BLOCK CROSSING

Pros

- Keeps multi-use path away from residential areas
- Fewer impacts to the Columbus Avenue / Fort Avenue island that is liked by residents
- Multi-use path only has two roadway crossings to get to and from Salem Willows Park

Cons

- Sight lines not as clear as Concept 1



ABUTTER INPUT

- Crossing locations
- On-street parking
- Green space considerations
- Winter Island Road Turning Radius



CONCEPT 3 – TWO CROSSINGS

- Modifies two existing crossings
- Multiuse Path crossing nearest to public parking
- Expands and connects sidewalk network
- Columbus Square one-way toward Fort Avenue
- Expands Green Space
- New crosswalk at Winter Island Road and Columbus Square



DESIGN FEATURES



RAISED CROSSWALKS



Salem Neighborhood Traffic Calming Program

DESIGN FEATURES – TRUCK APRON

EXHIBIT 4C: MOUNTABLE TRUCK APRON



MassDOT Separated Bike Lane Planning & Design Guide

Design Vehicle



Control Vehicle



Managed Vehicle



Build Toolkit NACTO



Source: APBP, courtesy of Norma Moores, IBI Group, Toronto



DISCUSSION

NEXT STEPS

1. Using this feedback, refine concept plans
2. Present at Traffic Commission Meeting
3. Complete 25% Design and cost estimates
4. Secure funding for implementation



THANK YOU!