

City of Salem, MA

# FORT AVENUE CROSSING & COLUMBUS SQUARE TRAFFIC CALMING

---

PREPARED BY MCMAHON ASSOCIATES

Traffic & Parking Commission Meeting

June 17, 2021



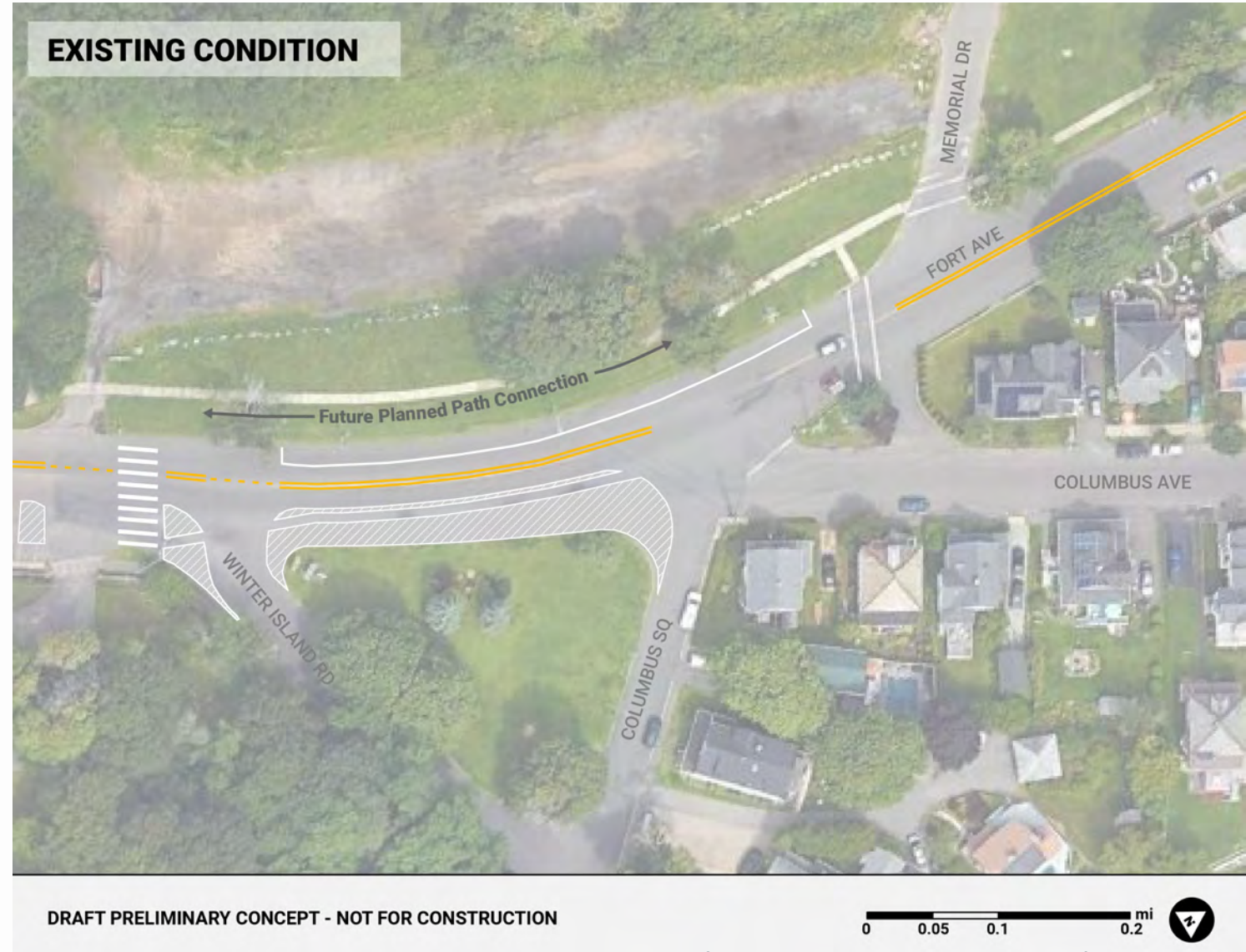
# MEETING GOALS

- **Purpose:**
  - Introduce the project
  - Provide background
  - Obtain input
- **Outcome:**
  - Understand neighborhood concerns and hopes
- **Process Tonight:**
  - Provide an overview of the project
  - Conduct a listening session to gather input



# STUDY AREA AND SCOPE OF WORK

- Fort Avenue intersections:
  - Memorial Drive
  - Winter Island Road
  - Columbus Square and Columbus Avenue
- Scope includes:
  - Evaluation of crosswalk locations
  - Safety improvements
  - Engineered design (25% design)

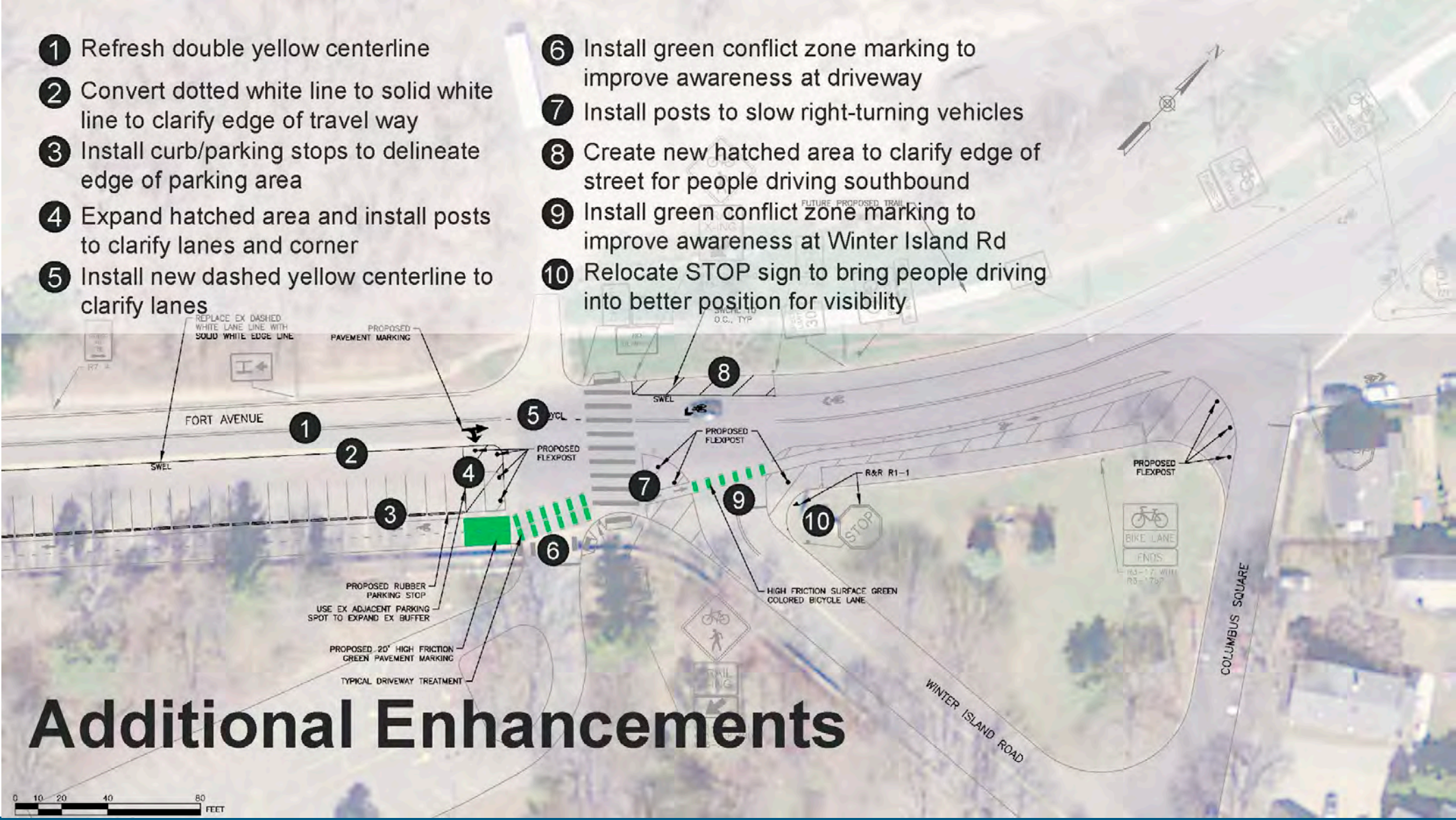


# BACKGROUND

- **City Plans & Policies**
  - Bicycle Master Plan – fully separated multi-use path
  - Complete Streets policy
  - Traffic Calming Program
- **Short-term improvements**
  - Striping October 2019
  - Additional physical changes Summer 2020
- **Future phases**
  - Salem Willows parking and access improvements
  - Multi-use path connections

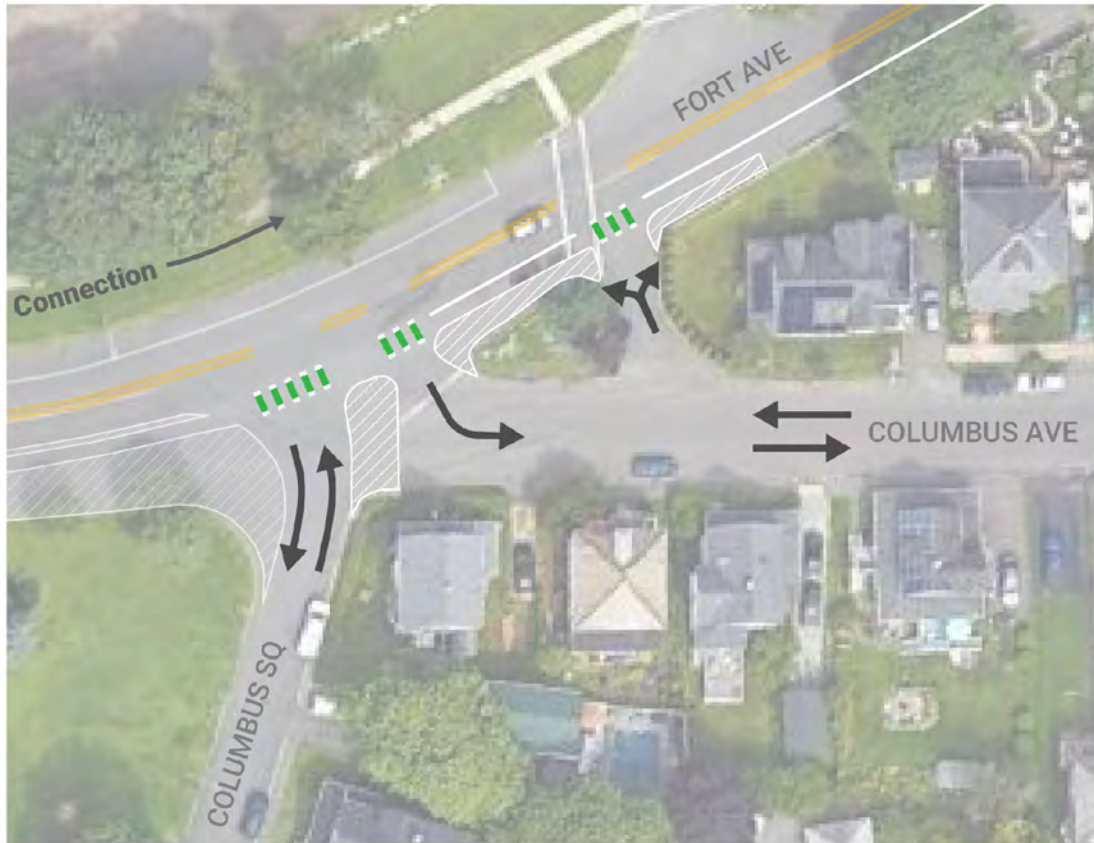


# ADDITIONAL ENHANCEMENTS (AUGUST 2020)

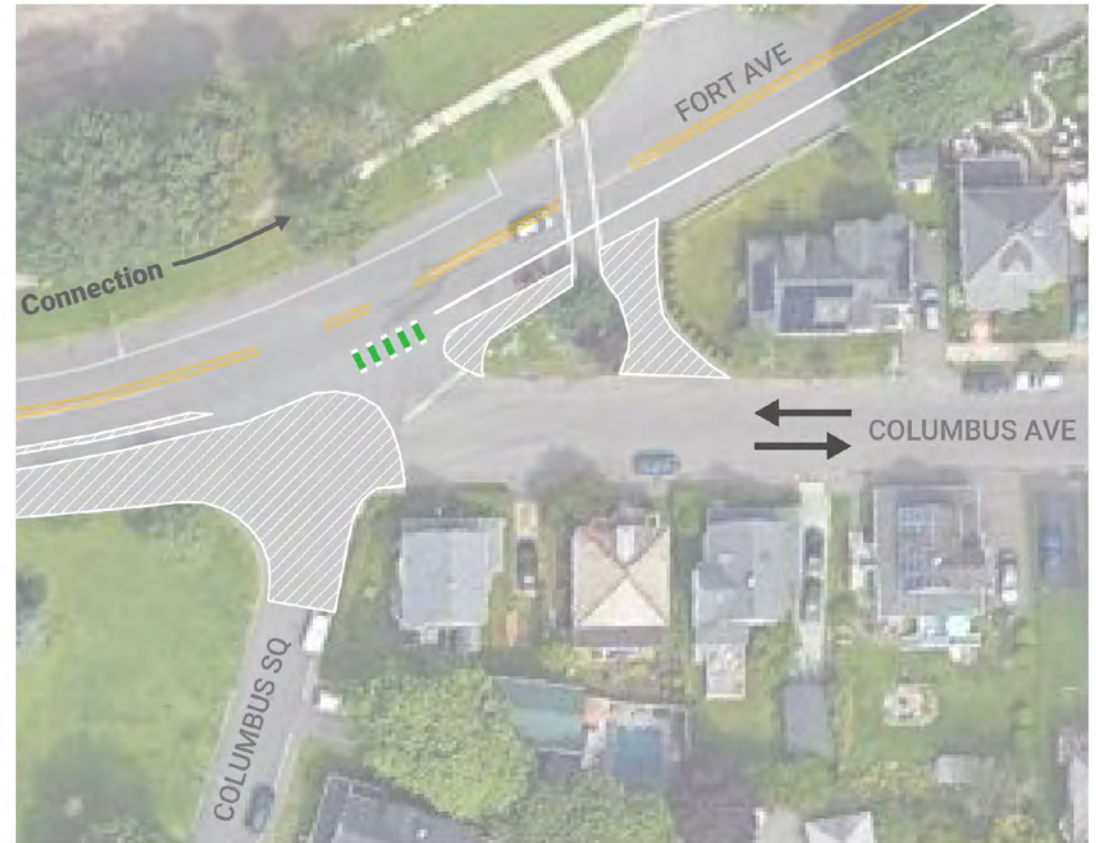


## Additional Enhancements

# ADDITIONAL CONCEPTS (DECEMBER 2020)



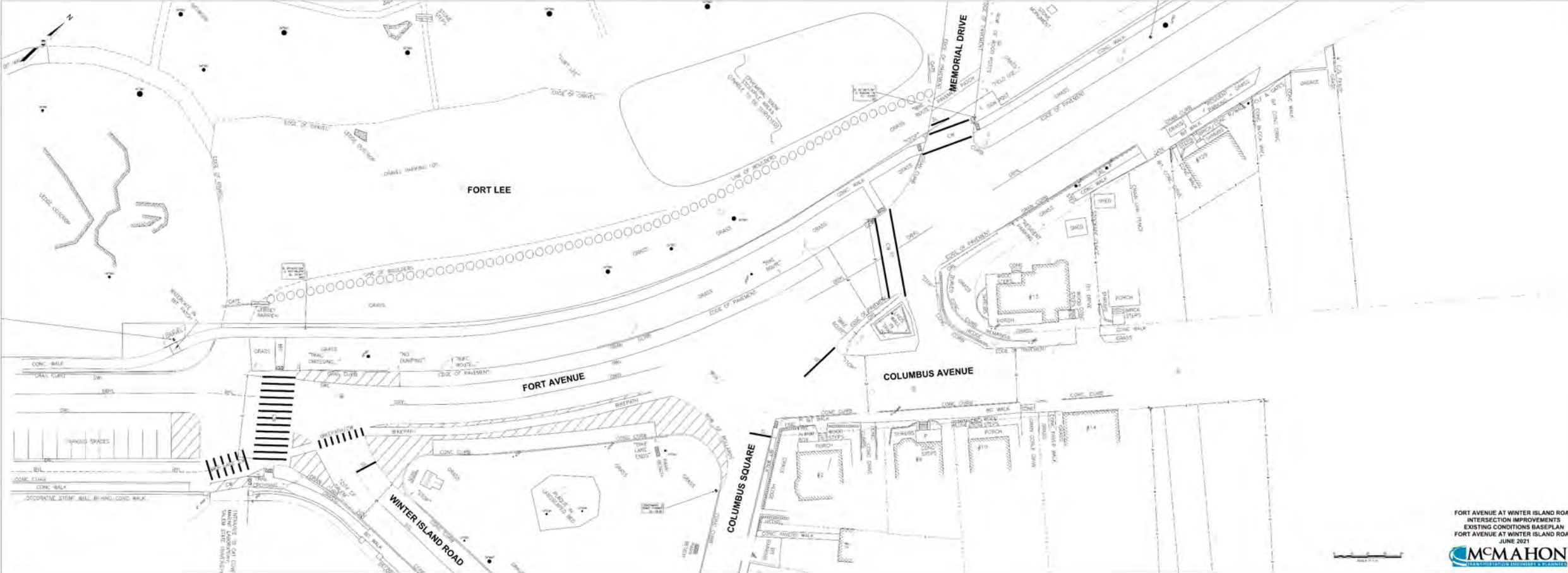
Concept Idea 1: Realigned Intersections



Concept Idea 2: Simplified Intersection

Source: Toole Design Group December 2020

# FORT AVENUE EXISTING CONDITIONS ROLL PLAN



# DISCUSSION

- What is most important for you to see from this project?
  - Safety?
  - Green space?
  - Parking retention?
- What should this project consider from the following perspectives?
  - Pedestrians?
  - Drivers?
  - Bicyclists?
- What do you see as the biggest challenges in achieving the goals of this project?





# NEXT STEPS

1. Compile feedback from tonight's meeting and identify key takeaways
2. Using this feedback, develop concept plans
3. Identify a preferred concept and meet to present the preferred concept
4. Complete 25% Design
5. Secure funding for implementation



**THANK YOU!**