

Parking Rate Restructure FAQ

The City of Salem is studying a rate restructuring for its paid downtown parking. In the nearly 10 years since the City's last comprehensive review of parking rates was undertaken, the parking issues in Salem have changed dramatically. In 2010, the goal was to restructure rates to move cars into underutilized locations.

Today, those assets have in some cases become over-utilized as the City has seen continued economic growth and commercial activity throughout downtown and along the waterfront. Salem garages routinely hit 85% capacity on weekdays and weekends, and on-street parking is equally scarce.

The City is pursuing opportunities to use our existing parking assets as efficiently as possible, but ultimately has limited opportunities to add to the parking supply in locations where drivers are seeking parking. The City is therefore studying this rate restructuring as a way to manage demand and ensure that residents and visitors alike can regularly find parking near their destination, which can help reduce congestion by cutting down on traffic circulating in an effort to find a parking space.

Additionally, the City's parking infrastructure has undergone substantial maintenance and upgrades in the past few years, including a complete resurfacing of the Church Street parking lots, new stairwells, life safety systems, waterproofing, and elevators in the Museum Place garage, and the installation of more convenient kiosks and parking gate systems in lots and garages. There will continue to be substantial and expensive maintenance needs in the near future. The Museum Place Garage holds 910 cars, approximately 47% of the City's off-street parking supply. It is the backbone of the City's parking supply, but to remain useful in the coming years, it is projected to require millions of dollars more in repairs and maintenance. The cost for these needed improvements should most properly be borne by those parking in the garage itself. Furthermore, streets and sidewalks in downtown see some of the heaviest vehicle and pedestrian traffic in the City, and the wear and tear on these assets can be significant. Maintaining what we have becomes more expensive if we must continue to defer maintenance due to limited resources or rely on taxpayers alone to cover costs as they arise.

Q. Why is the City proposing a rate restructuring now?

A. It has been nearly 10 years since the City last restructured downtown parking rates. In that time, the parking issues in Salem have changed dramatically. Restructuring rates now will help address those issues and also provide parking-derived revenues for necessary parking facility maintenance and repair work.

Q. Will all parking rates change? If so, by how much?

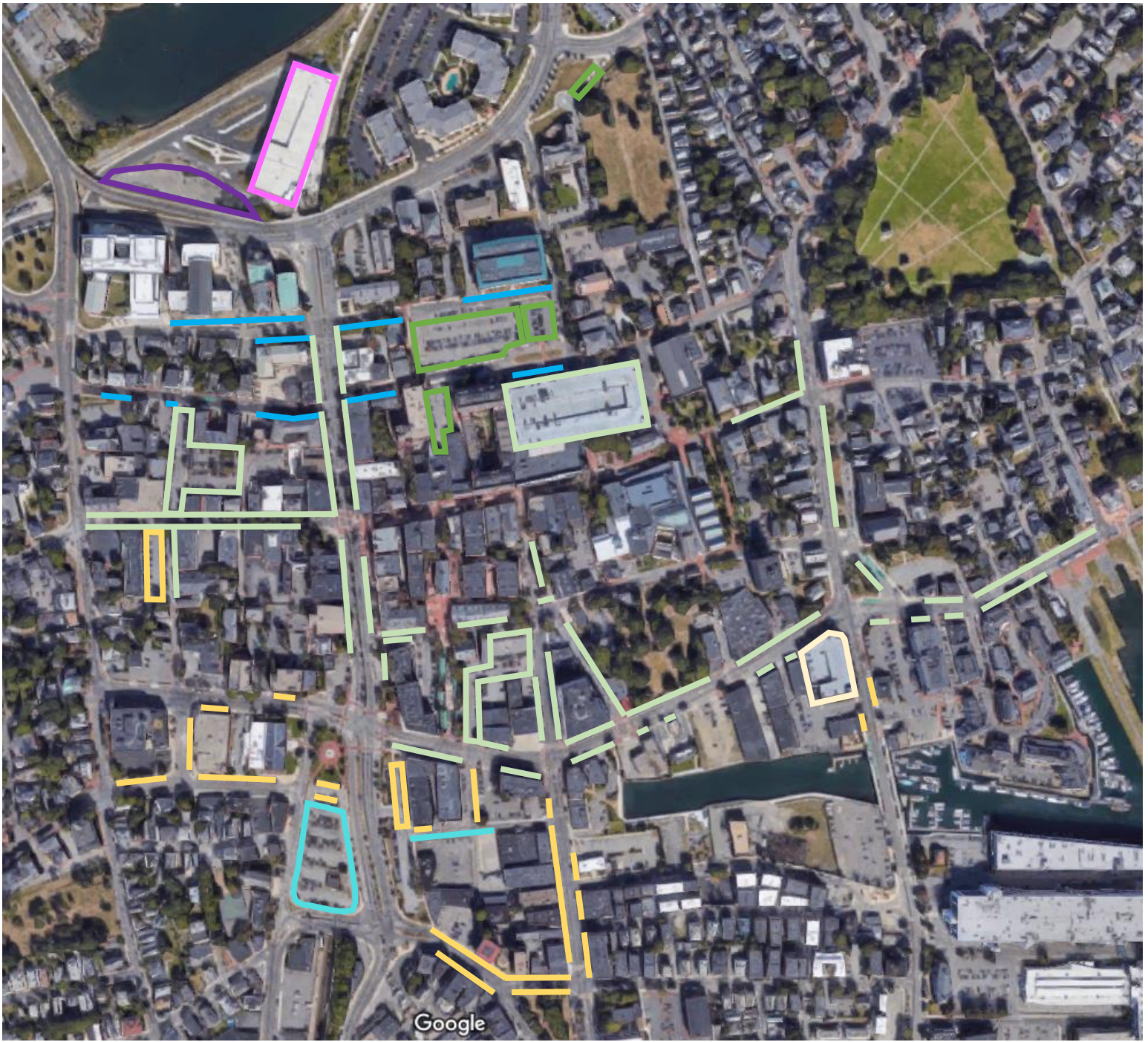
A. The current proposal would not change every parking rate in the City. Based on an analysis of revenue and utilization, the City has proposed adjustments in some locations that have seen exceptionally high utilization, while maintaining existing rates in other locations with lower utilization. The proposal would not change the price of annual parking passes for the Museum Place Garage, however monthly passes for the garage and for the Riley Plaza lot would be adjusted.

Q. Will there be a different rate for residents and visitors?

A. In some locations, technology will allow the City to implement preferential resident parking rates. These include pay-by-plate lots such as the Church Street lots, the Crombie Street lot, and the Old Salem Jail lot. In the garages, residents will be eligible to purchase parking passes or barcodes at lower rates than visitors. As the City replaces on-street parking meters with parking kiosks, these resident rates will be implemented for on-street paid parking as well. Proof of residency for the garage passes would be required, while the pay-by-plate kiosks will automatically reduce the parking rate to the resident rate when a vehicle plate registered in Salem is entered at the kiosk.


Q. Will this change anything in October?

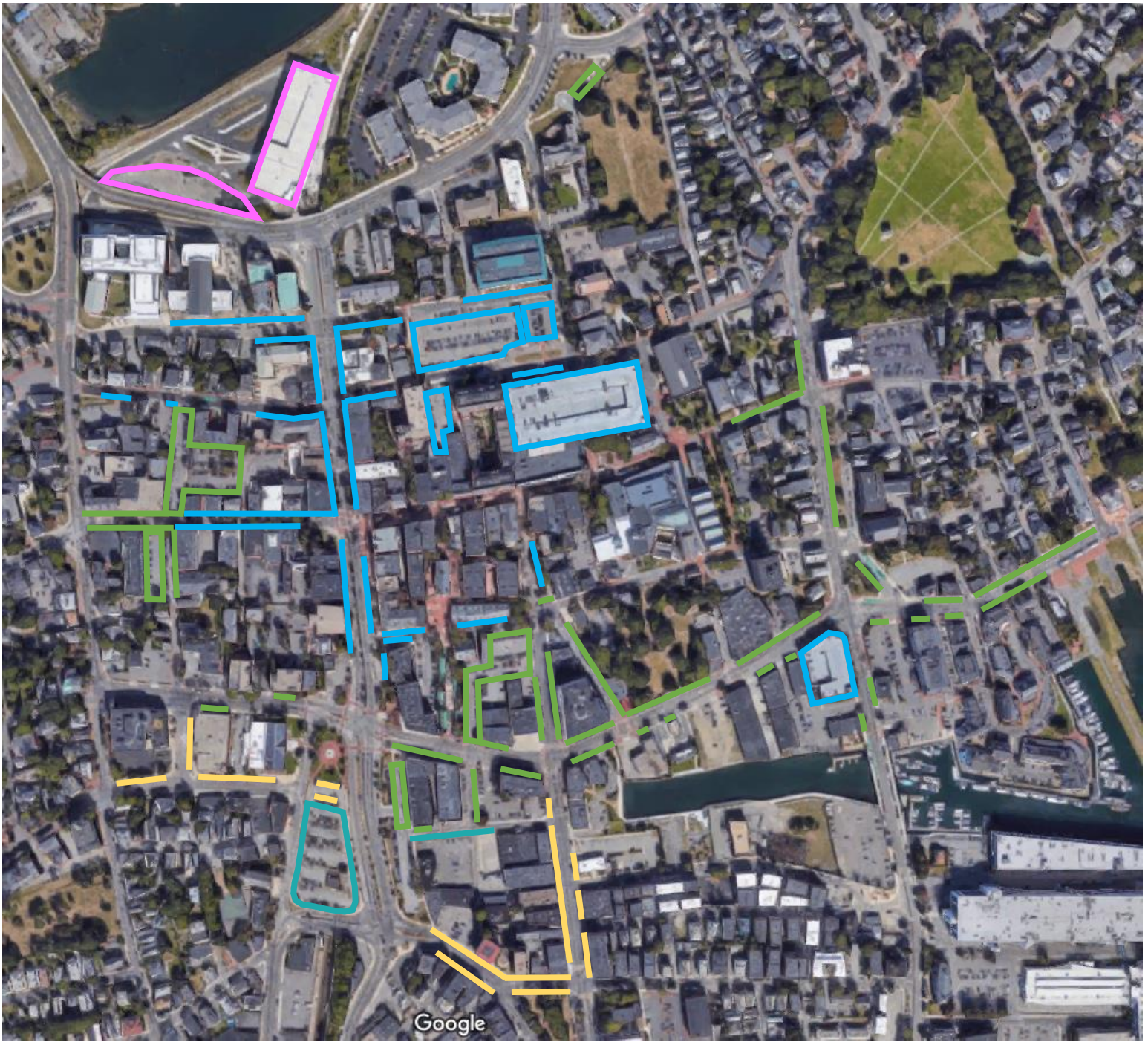
A. As part of this rate restructuring, the City is proposing an increase in the visitor parking rate for the garages and Church Street West lot from \$20 to \$30. Residents will still be able to park in the Church Street West lot and the City's surface lot at the MBTA for free on October weekends.



Parking Rates – Downtown Salem – Existing

*The meters on Holyoke Square and Gedney Street have been recommended by the Traffic and Parking Commission but are awaiting final passage and approval by the City Council.

- | | |
|--|--|
|  \$0.25/hour |  \$4.00/day |
|  \$0.50/hour |  \$5.00/day |
|  \$0.75/hour |  \$25/month |
|  \$1.00/hour | |
|  \$1.50/hour | |



Parking Rates – Downtown Salem – Proposed

*The meters on Holyoke Square and Gedney Street have been recommended by the Traffic and Parking Commission but are awaiting final passage and approval by the City Council.

- \$0.50/hour
- \$1.00/hour
- \$1.50/hour
- \$5.00/day
- \$35/month

Resident Parking Rates:

Museum Place Garage	\$1.00/hour
South Harbor Garage	\$1.00/hour
Church Street Lots	\$1.00/hour
Crombie Street Lot	\$0.75/hour
Depot Lot at MBTA	\$4.00/day

FY2019 Proposed Parking Rate Changes (Hourly Rates Unless Otherwise Indicated)

Location	Type	Current Rate	Proposed Rate
Museum Place Garage	Garage – Hourly	\$0.75	\$1.50 (resident rate \$1.00)
	Garage – Monthly Pass	\$65.00	\$80.00 (resident rate \$70.00)
South Harbor Garage	Garage	\$0.25	\$1.50 (resident rate \$1.00)
Church Street Lots	Kiosk	\$1.00	\$1.50 (resident rate \$1.00)
Crombie Street Lot	Kiosk	\$0.50	\$1.00 (resident rate \$0.75)
Depot Lot at MBTA	Kiosk	\$4.00 per day	\$5.00 per day (resident rate \$4.00 per day)
Central Street	Meters	\$0.75	\$1.50
Crombie Street	Meters	\$0.75	\$1.00
Derby Street	Meters	\$0.75	\$1.00
Dodge Street	Meters	\$0.50	\$1.00
Dodge Street Court	Meters	\$0.50	\$1.00
Essex Street	Meters	\$0.75	\$1.50
Front Street	Meters	\$0.75	\$1.50
Hawthorne Boulevard	Meters	\$0.75	\$1.00
Klopp Alley/Front Street Lot	Meters	\$0.75	\$1.00
Lafayette Street (Zone 264)	Meters	\$0.75	\$1.00
New Derby Street	Meters	\$0.75	\$1.00
Salem Green Lot	Meters	\$1.00	\$1.50
Sewall Street Lot	Meters	\$0.75	\$1.00
South Harbor Garage (Level 1 Meters)	Meters	\$0.25	\$1.50
Washington Street	Meters	\$0.75	\$1.50
Washington Street (Upper)	Meters	\$0.50	\$1.00
Riley Plaza Lot	Monthly Pass	\$25.00 per month	\$35.00 per month
Museum Place and South Harbor Garages – October Weekends	Garage	\$20.00 per day	\$30 per day