

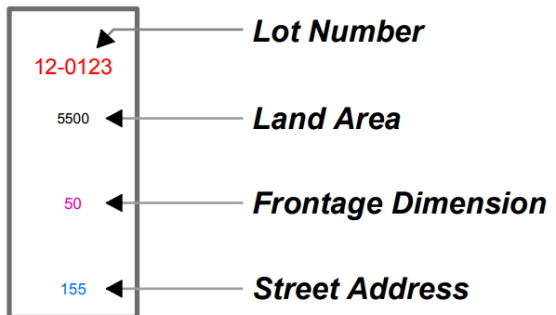


**ASSESSOR  
MAP NUMBER  
47**

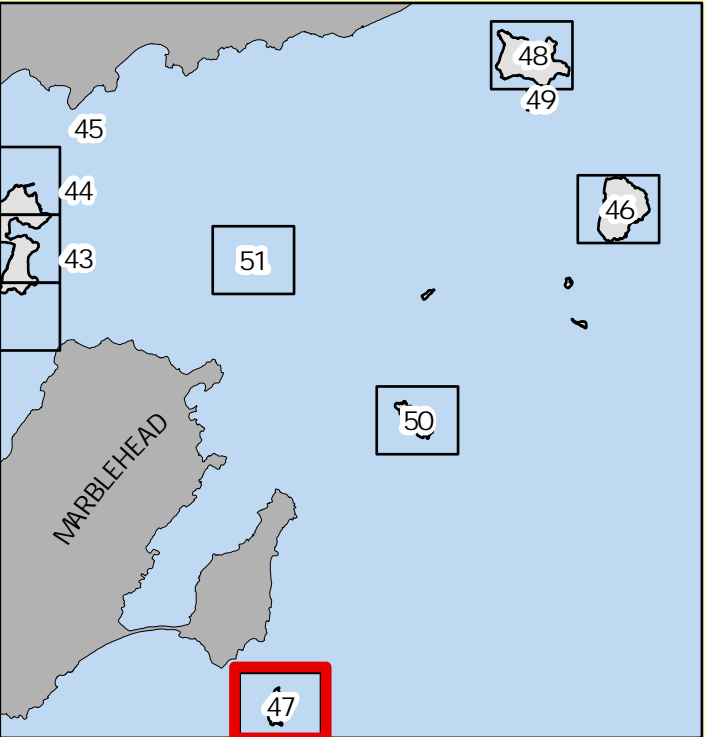
Tinkers Island is owned by the  
City of Salem and is leased out  
to Tinker's Island Association.  
The parcels on the map  
represent the leased areas.  
The total land area of the  
island is 9.18 acres.



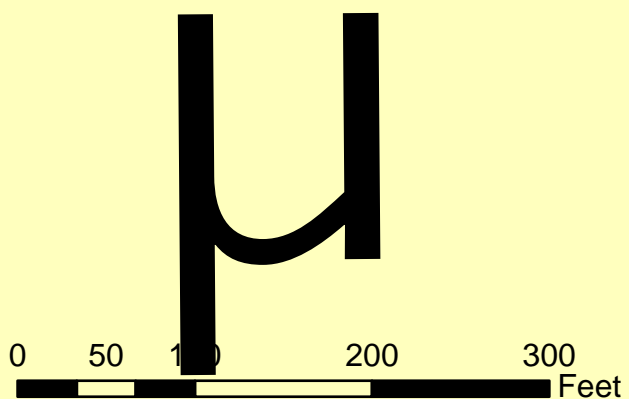
- Assessor's Index
- Tax Parcels
- Buildings
- Public Right of Way
- Private Right of Way
- Rail ROW Parcel
- Railroad
- Edge of Pavement
- Easement Boundary
- Easements
- Water
- Paper Street



DATA SOURCES:  
PARCEL & EASEMENT DATA - SALEMGIS, 2023  
FOR ASSESSMENT, PLANNING AND REFERENCE  
PURPOSES ONLY.  
NOT INTENDED TO BE USED FOR DESCRIPTION,  
CONVEYANCE, AUTHORITATIVE DEFINITION OF  
LEGAL  
BOUNDARY, OR PROPERTY TITLE  
THIS IS NOT A SURVEY PRODUCT.



MAP 46-BAKERS ISLAND  
MAP 47- TINKERS ISLAND  
MAP 48- GREAT MISERY ISLAND  
MAP 49- LITTLE MISERY ISLAND  
MAP 50- CHILDREN'S ISLAND  
MAP 51- CUNNEY ISLAND  
MAP 52- RAM ISLAND



MAP UPDATED BY  
SALEMGIS, NOVEMBER 2023