

CITY OF SALEM

MASSDOT SHARED STREETS GRANT PROGRAM

WILLSON STREET SAFE ROUTES TO SCHOOL IMPROVEMENTS



LOCUS PLAN
1"=100'

INDEX

DWG. NO.	SHEET NO.	PLAN TITLE
G-01	1	TITLE SHEET & INDEX
G-02	2	GENERAL NOTES & LEGEND
D-01	3	CONSTRUCTION DETAILS
PM-01	4	PAVEMENT MARKINGS AND SIGNAGE
PM-02	5	PAVEMENT MARKINGS AND SIGNAGE
PM-03	6	PAVEMENT MARKINGS AND SIGNAGE
PM-04	7	PAVEMENT MARKINGS AND SIGNAGE

ALL WORK SHALL CONFORM TO THESE PLANS, THE MASSACHUSETTS DEPARTMENT OF TRANSPORTATION (MASSDOT) STANDARD SPECIFICATIONS FOR HIGHWAYS AND BRIDGES DATED 1988, THE MASSDOT SUPPLEMENTAL SPECIFICATIONS DATED JUNE 15, 2012, THE MASSDOT INTERIM SUPPLEMENTAL SPECIFICATIONS DATE OCTOBER 17, 2014, THE MASSDOT 2016 CONSTRUCTION STANDARD DETAILS, THE MASSDOT 1968 STANDARD DRAWINGS FOR TRAFFIC SIGNALS AND HIGHWAY LIGHTING, THE MANUAL ON UNIFORM TRAFFIC CONTROL DEVICES FOR STREETS AND HIGHWAYS, 2009 EDITION, AND ALL INTERIM REVISIONS PUBLISHED BY FEDERAL HIGHWAY ADMINISTRATION.

100% DESIGN SUBMISSION

PROFESSIONAL CERTIFICATION <small>I HEREBY CERTIFY THAT THESE PLANS WERE PREPARED OR APPROVED BY ME, AND THAT I AM A DULY LICENSED PROFESSIONAL ENGINEER UNDER THE LAWS OF THE STATE OF MASSACHUSETTS, LICENSE NO. 53115 EXPIRATION DATE: 06-30-2020.</small>		REUSE OF DOCUMENTS					MASSDOT SHARED STREETS GRANT PROGRAM CITY OF SALEM	TITLE & INDEX	PROJECT NO. 60197.06
		ALL DRAWINGS ARE INSTRUMENTS OF PROFESSIONAL SERVICE FOR THIS PROJECT. REUSE OR ALTERATION IS AT THE USER'S SOLE RISK.						WILLSON STREET SAFE ROUTES TO SCHOOL IMPROVEMENTS	DATE 8/18/2020 DRAWING NO. G-01 SHEET NO. 1 OF 7


GENERAL NOTES

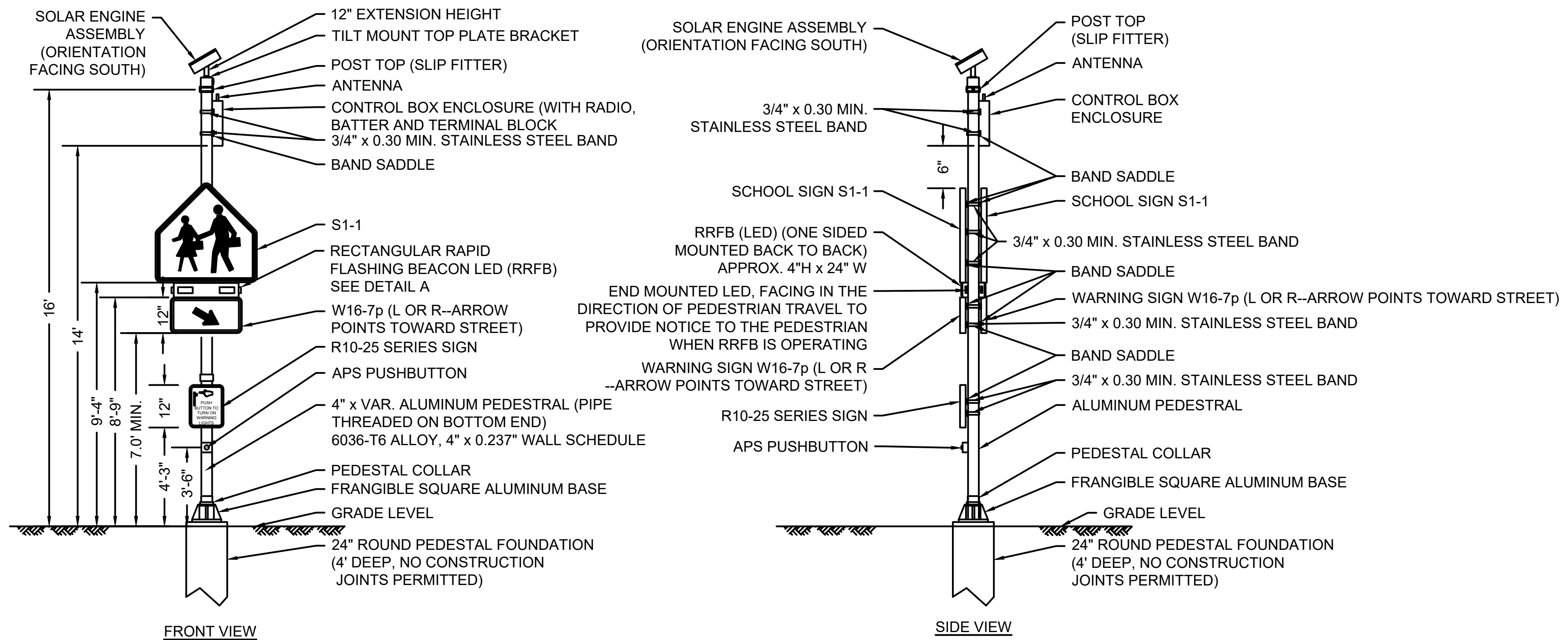
1. THE CONTRACTOR SHALL COMPLY WITH ALL APPLICABLE FEDERAL, STATE, AND LOCAL LAWS, RULES, REGULATIONS AND SAFETY CODES IN THE CONSTRUCTION OF ALL IMPROVEMENTS. STRIPING WORK SHALL ALSO MEET ALL APPLICABLE REQUIREMENTS OF THE MANUAL OF UNIFORM TRAFFIC CONTROL DEVICES (MUTCD).
2. BASE MAPPING WAS ESTABLISHED UTILIZING GIS DATA.
3. EXISTING CONDITIONS MAY VARY FROM THOSE SHOWN ON THE PLANS. THE CONTRACTOR SHALL VERIFY EXISTING CONDITIONS AND ADJUST WORK PLAN ACCORDINGLY PRIOR TO BEGINNING CONSTRUCTION. THE CONTRACTOR SHALL REPORT ANY CONFLICTS BETWEEN EXISTING CONDITIONS AND PROPOSED FEATURES TO THE ENGINEER.
4. ALL PAVEMENT MARKINGS SHALL MEET MUTCD STANDARD SPECIFICATIONS.
5. IF PROPOSED PAVEMENT MARKINGS ARE SHOWN IN THE AREA OF EXISTING PAVEMENT MARKINGS, ERADICATE ANY CONFLICTING MARKINGS USING AN APPROVED NON-DESTRUCTIVE METHOD SUCH THAT NO TRACES OF EXISTING MARKINGS ARE VISIBLE. THE CONTRACTOR SHALL NOT INSTALL NEW PAVEMENT MARKINGS WITHOUT ERADICATING EXISTING PAVEMENT MARKINGS FIRST AND AS APPROVED BY THE CITY OF SALEM.
6. THE CONTRACTOR SHALL TAKE ADEQUATE PRECAUTIONS TO PROTECT ALL WALKS, GRADING, SIDEWALKS, AND FEATURES ADJACENT TO THE LIMITS OF WORK. AS DIRECTED BY THE ENGINEER, AND AT THE CONTRACTOR'S OWN EXPENSE, THE CONTRACTOR SHALL REPAIR, REPLACE, OR OTHERWISE MAKE GOOD ANY DAMAGE CAUSED BY THE CONTRACTOR'S OPERATIONS.
7. THE CONTRACTOR SHALL BE FULLY RESPONSIBLE FOR ANY AND ALL DAMAGES WHICH ARE A RESULT OF THE CONTRACTOR'S ACTIVITIES OR METHOD OF CONSTRUCTION. THE CONTRACTOR SHALL REPAIR OR REPLACE ALL DAMAGED UTILITIES AND RESTORE SERVICE IN A TIMELY MANNER, PRIOR TO PROCEEDING WITH CONSTRUCTION, AT THE CONTRACTOR'S EXPENSE.
8. WHERE AN EXISTING UTILITY IS FOUND TO BE IN CONFLICT WITH THE PROPOSED WORK, THE LOCATION, ELEVATION AND SIZE OF THE UTILITY SHALL BE ACCURATELY DETERMINED WITHOUT DELAY BY THE CONTRACTOR, AND THE INFORMATION FURNISHED TO THE ENGINEER FOR RESOLUTION OF THE CONFLICT.
9. AREAS OUTSIDE THE LIMITS OF PROPOSED WORK DISTURBED BY THE CONTRACTOR'S OPERATIONS SHALL BE RESTORED BY THE CONTRACTOR TO THEIR ORIGINAL CONDITION AT THE CONTRACTOR'S EXPENSE.
10. THE TERM "PROPOSED" (PROP) MEANS WORK TO BE CONSTRUCTED USING NEW MATERIALS, REMOVING EXISTING MATERIALS IDENTIFIED AS "REMOVE AND STACK" (R&S), OR, WHERE APPLICABLE, RE-USING EXISTING MATERIALS IDENTIFIED AS "REMOVE AND RESET" (R&R).
11. THE TERM "MEET EX" MEANS TO MEET BOTH THE EXISTING HORIZONTAL ALIGNMENT AND ELEVATION.
12. ERADICATE ALL EXISTING ROADWAY EDGE LINE MARKINGS WITHIN PROJECT LIMITS.
13. STRIPED PARKING SPACES SHALL MAINTAIN A MINIMUM DISTANCE OF 4' FROM ALL DRIVEWAYS UNLESS OTHERWISE NOTED. CENTER PARKING SPACES BETWEEN DRIVEWAYS WHERE APPLICABLE.
14. FLEXPOSTS TO BE CENTERED IN BUFFER SPACE UNLESS OTHERWISE NOTED.

LEGEND AND ABBREVIATIONS

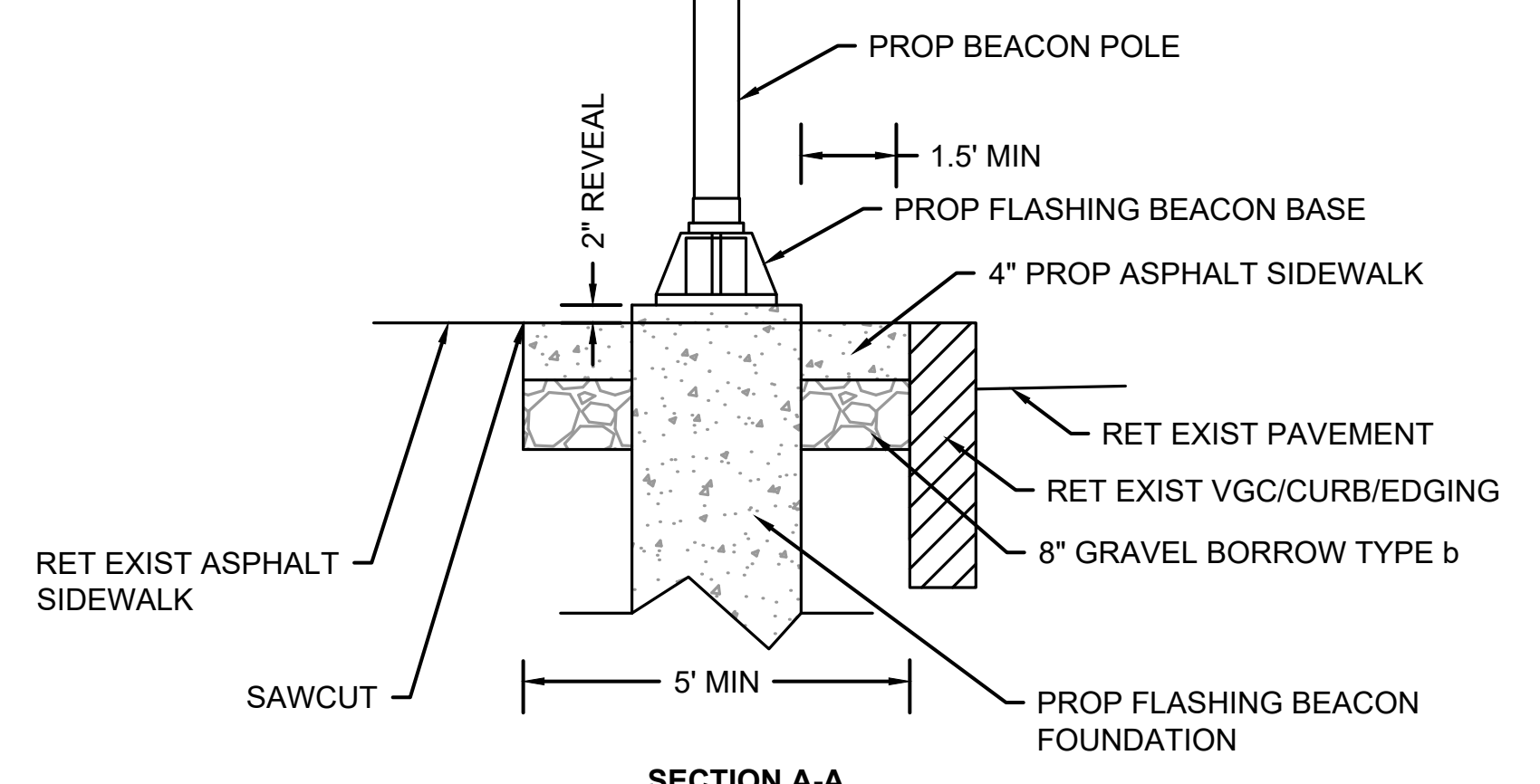
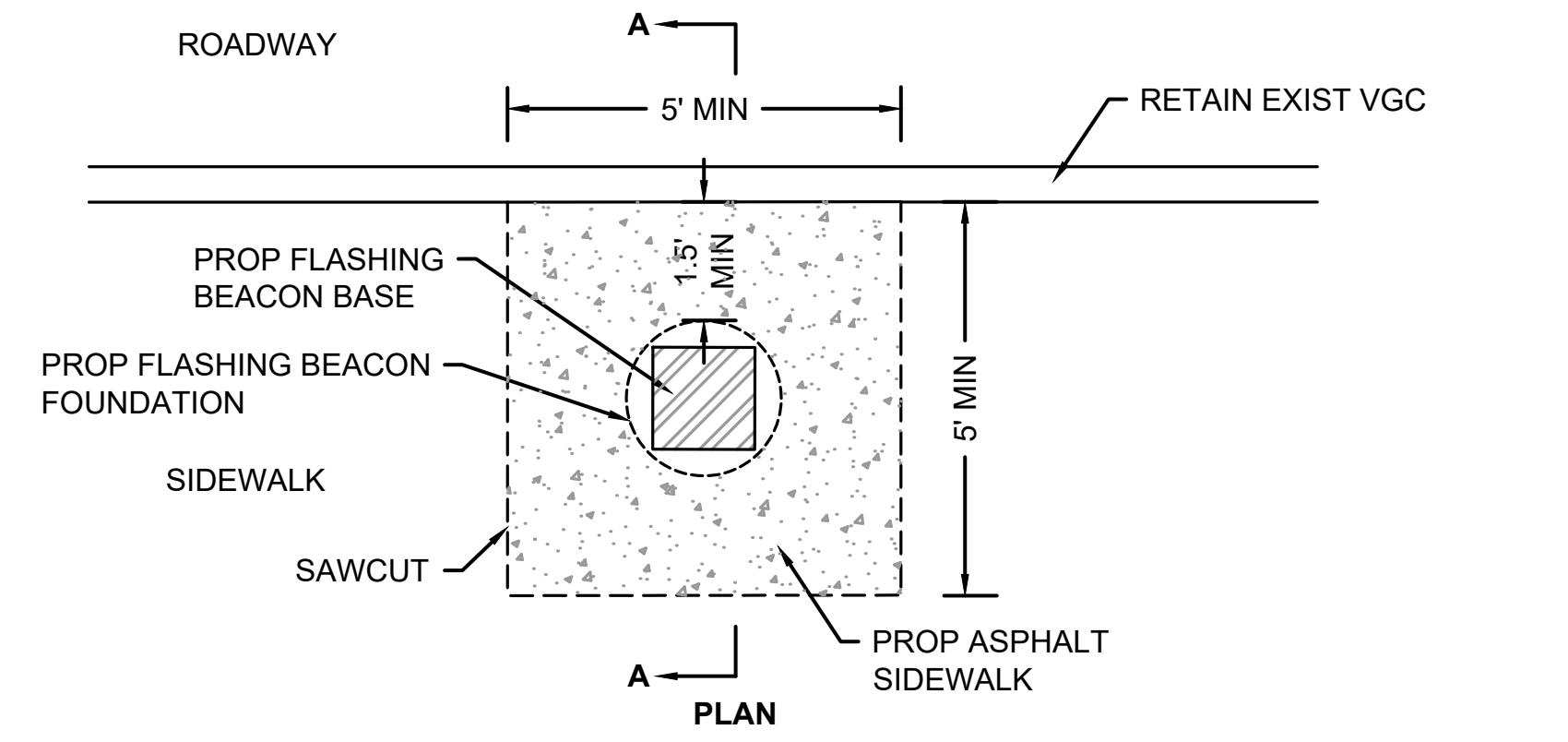
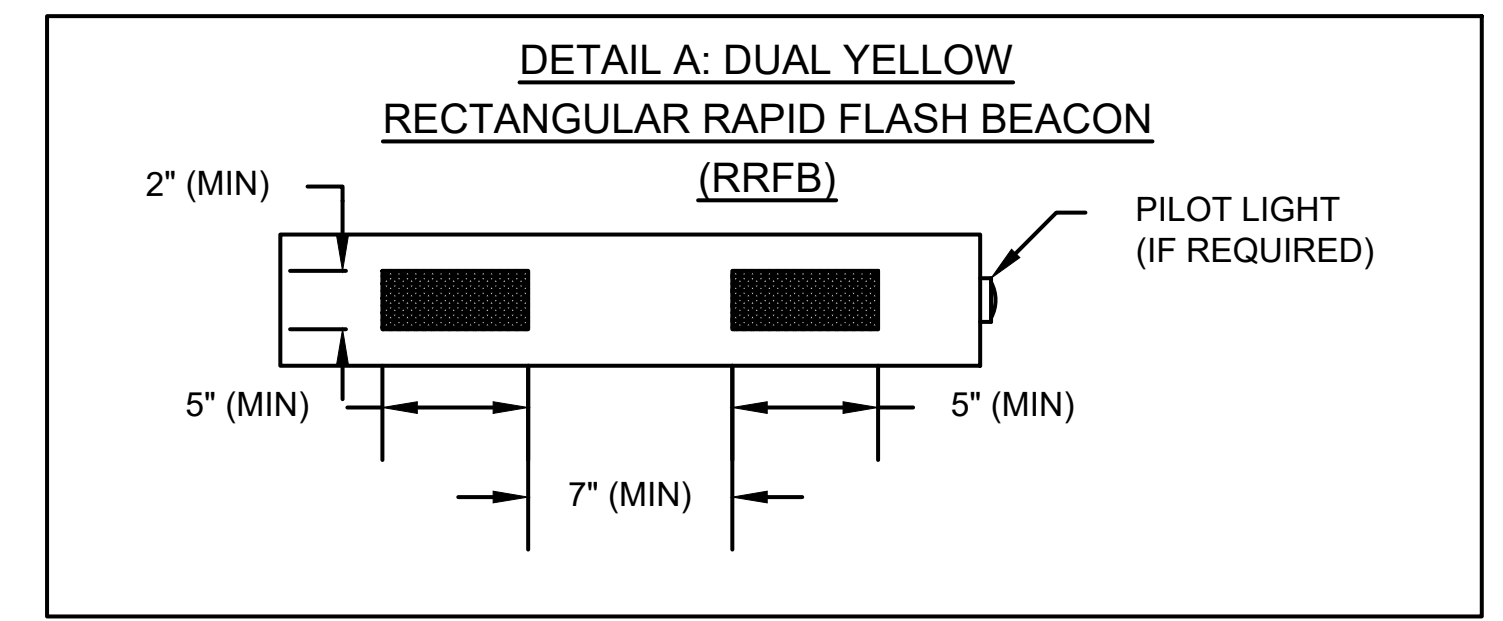
EXISTING	PROPOSED	
	--- --	LIMIT OF PAVEMENT MARKINGS
	BE →	BEGIN ERADICATION
	EE →	END ERADICATION
	ES →	ERADICATE SYMBOL
	EX	EXISTING
	MNT	MOUNT
	R&R	REMOVE AND RESET
	☐	SIGN POST
	☐	HYDRANT
	●	FLEX POST
	☉	TRASH BARREL
	☉	STREET LIGHT
	☉	TRAFFIC SIGNAL
	☉	PUSH BUTTON
	☉	UTILITY POLE
	☉	TREE
	☉	DOUBLE HEAD METER
	☉	SINGLE HEAD METER
	☉	MULTI-SPACE METER
	☉	ELECTRIC BOX
	☉	BOLLARD
	☉	BICYCLE RACK
	☉	WHEELCHAIR RAMP
	☉	FENCE
	☉	WALL
	☉	RAILROAD TRACKS
	☉	BICYCLE LANE SYMBOL
	☉	SHARED LANE MARKING SYMBOL
	SWEL	4" SOLID WHITE EDGE LINE
	SWLL	4" SOLID WHITE LANE LINE
	SWBLL	6" SOLID WHITE BICYCLE LANE LINE
	BWLL	4" BROKEN WHITE LANE LINE (10' MARK, 20' SPACE)
	DWLL	4" DOTTED WHITE LANE LINE (2' LINE, 4' SPACE)
	DWBLL	6" DOTTED WHITE BICYCLE LANE LINE (2' LINE, 4' SPACE)
	SYEL	4" SOLID YELLOW EDGE LINE
	SYCL	4" SOLID YELLOW CENTER LINE
	BYCL	4" BROKEN YELLOW CENTER LINE (10' MARK, 20' SPACE)
	DYCL	2-4" DOUBLE YELLOW CENTER LINES
	DDYCL	2-4" DOTTED DOUBLE YELLOW CENTER LINES (2' LINE, 4' SPACE)
	SDYCL	4" SINGLE DOTTED YELLOW CENTER LINES (2' LINE, 4' SPACE)
	SWCHL	8" SOLID WHITE CHANNELIZATION LINE
	SYCHL	8" SOLID YELLOW CHANNELIZATION LINE
	SL	12" MINIMUM WHITE STOP LINE (UNLESS OTHERWISE NOTED)
	CW	12" CONTINENTAL CROSSWALK LINES AT 3' O.C. (UNLESS OTHERWISE SHOWN)
		8" SWCHL OR SYCHL (10' O.C. AT 45' UNLESS OTHERWISE NOTED)
	ONLY →	WHITE PAVEMENT ARROW AND LEGEND
	█	COLORIZED PAVEMENT - MATERIAL AS SPECIFIED ON PLANS
	☐	NEW OR RELOCATED SIGN

100% DESIGN SUBMISSION

PROFESSIONAL CERTIFICATION I HEREBY CERTIFY THAT THESE PLANS WERE PREPARED OR APPROVED BY ME, AND THAT I AM A DULY LICENSED PROFESSIONAL ENGINEER UNDER THE LAWS OF THE STATE OF MASSACHUSETTS, LICENSE NO. 53115 EXPIRATION DATE: 06-30-2020.	REUSE OF DOCUMENTS ALL DRAWINGS ARE INSTRUMENTS OF PROFESSIONAL SERVICE FOR THIS PROJECT. REUSE OR ALTERATION IS AT THE USER'S SOLE RISK.				 2 OLIVER STREET, SUITE 305 BOSTON, MA 02109 PHONE: 617.619.9910 FAX: 301.927.2800 www.tooledesign.com	MASSDOT SHARED STREETS GRANT PROGRAM CITY OF SALEM	GENERAL NOTES & LEGEND	PROJECT NO. 60197.06
	DSGN BT DR BT CHK JB APVD MD	NO. DATE REVISION BY APVD	WILLSON STREET SAFE ROUTES TO SCHOOL IMPROVEMENTS	DATE 8/18/2020 DRAWING NO. G-02 SHEET NO. 2 OF 7				

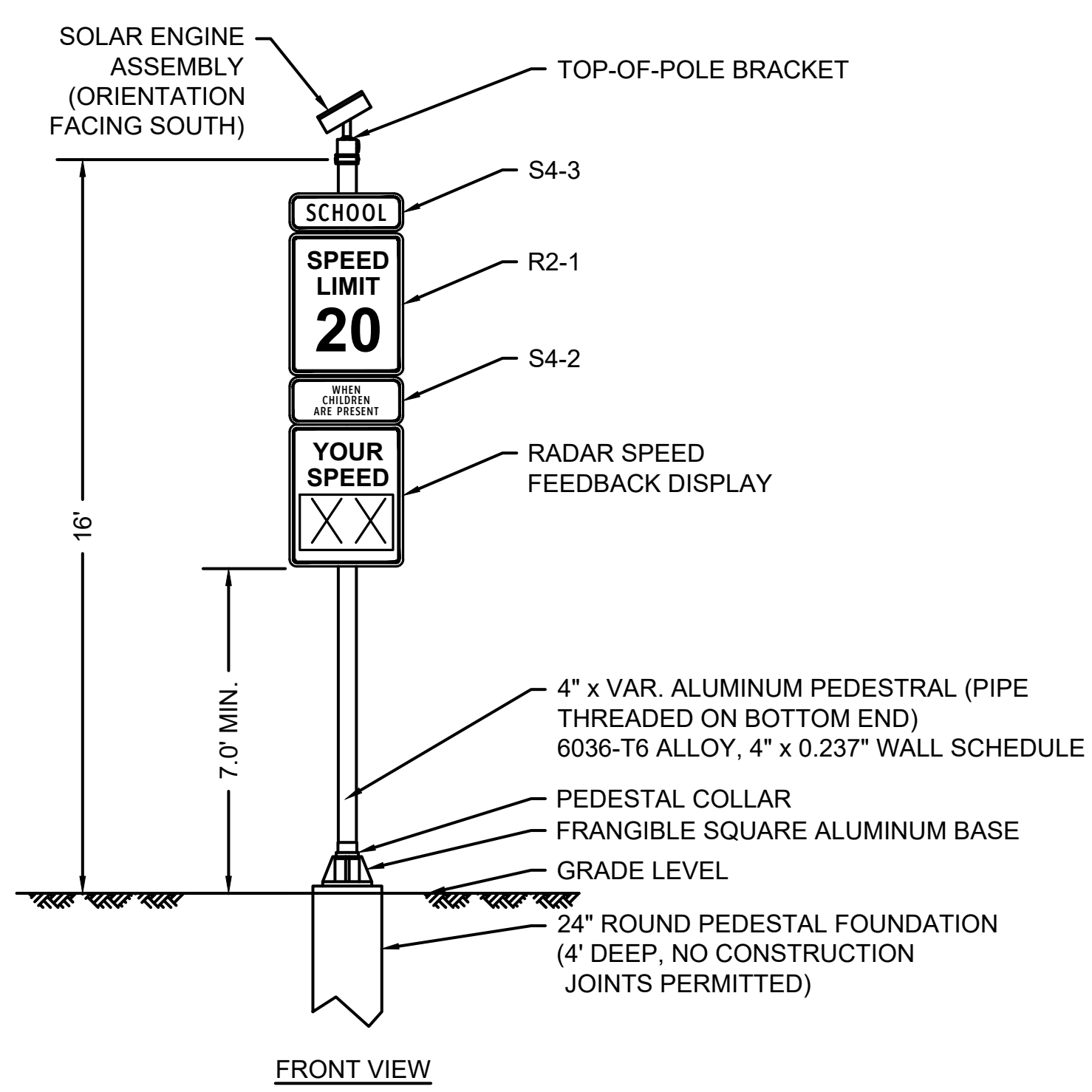


RECTANGULAR RAPID FLASH BEACON (SOLAR POWERED)
NOT TO SCALE

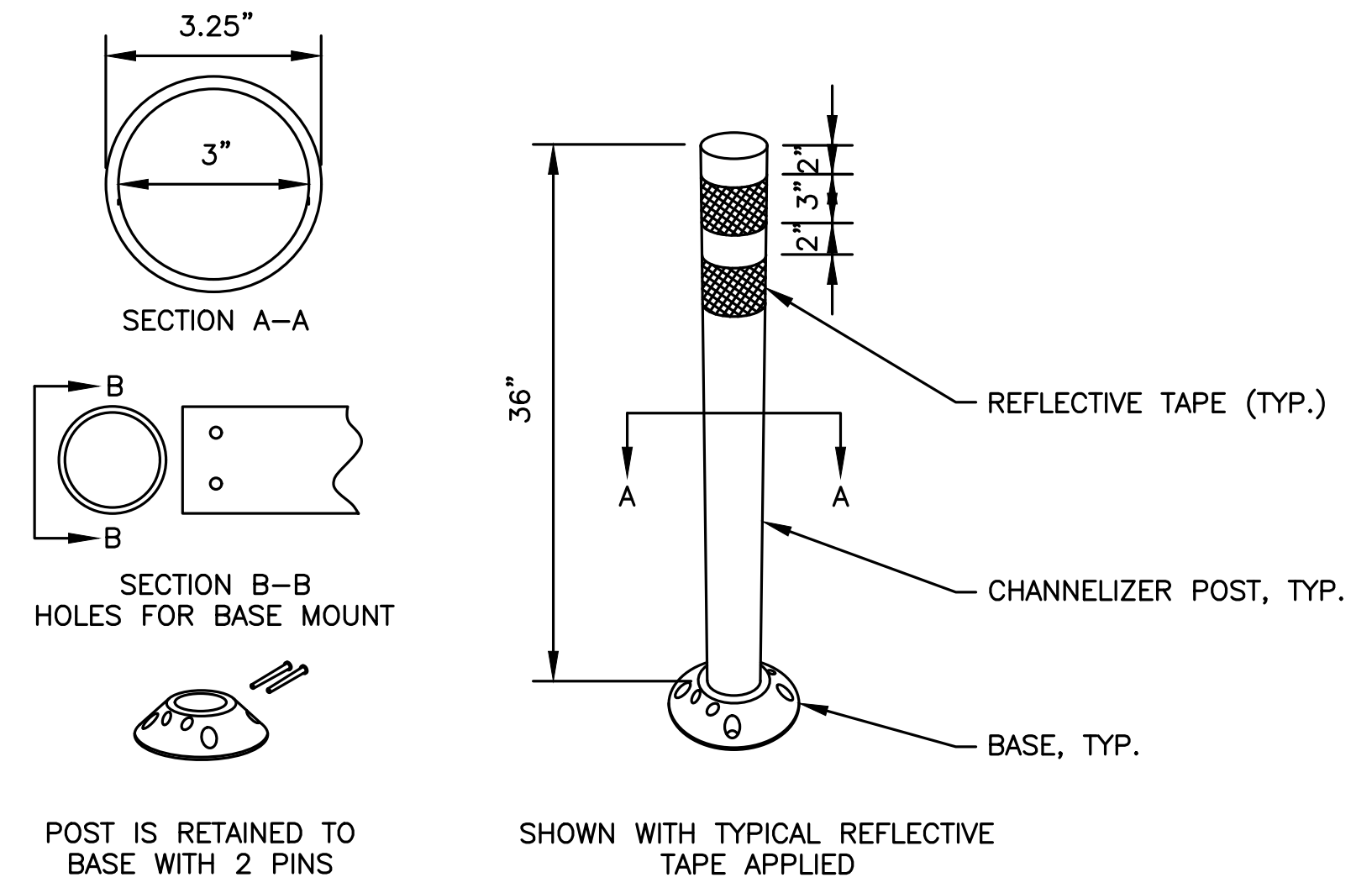


NOTE:
EXPAND AREA OF ASPHALT SIDEWALK IF NEEDED TO ENSURE MIN 4'X4' PAVED AREA IN FRONT OF PUSH BUTTON.

**RECTANGULAR RAPID FLASH BEACON
PEDESTAL FOUNDATION INSTALLATION DETAIL**
NOT TO SCALE



**SCHOOL ZONE SPEED FEEDBACK
ASSEMBLY (SOLAR POWERED)**
NOT TO SCALE



FLEXPOST NOTES:

1. INSTALLATION TO BE COMPLETED IN ACCORDANCE WITH MANUFACTURER'S SPECIFICATIONS.
2. DIMENSIONS, MATERIALS, AND ATTACHMENTS MAY VARY BETWEEN MANUFACTURERS.
3. COLOR OF POST SHALL MATCH COLOR OF APPLICABLE LANE LINE.

**36" SURFACE MOUNT
(BOLTED) FLEXPOST DETAIL**
NOT TO SCALE

100% DESIGN SUBMISSION

PROFESSIONAL CERTIFICATION

I HEREBY CERTIFY THAT THESE PLANS WERE PREPARED OR APPROVED BY ME, AND THAT I AM A DULY LICENSED PROFESSIONAL ENGINEER UNDER THE LAWS OF THE STATE OF MASSACHUSETTS, LICENSE NO. 53115
EXPIRATION DATE: 06-30-2020.

REUSE OF DOCUMENTS		ALL DRAWINGS ARE INSTRUMENTS OF PROFESSIONAL SERVICE FOR THIS PROJECT. REUSE OR ALTERATION IS AT THE USER'S SOLE RISK.	
DSGN	BT		
DR	BT		
CHK	JB		
APVD	MD	NO.	DATE
		REVISION	BY
			APVD

TOOLE DESIGN

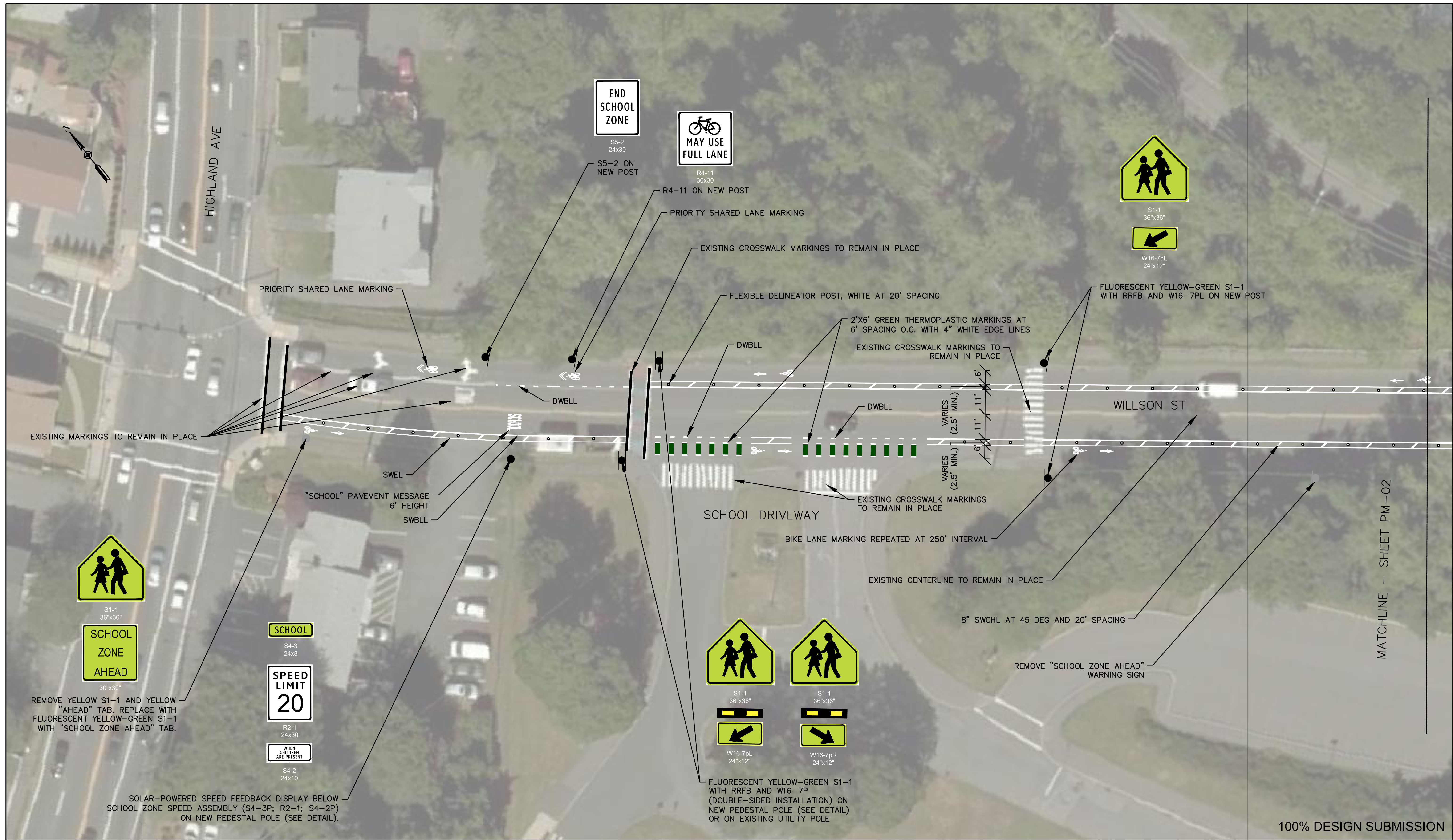
2 OLIVER STREET, SUITE 305
BOSTON, MA 02109
PHONE: 617.619.9910
FAX: 301.927.2800
www.tooledesign.com

MASSDOT SHARED STREETS
GRANT PROGRAM
CITY OF SALEM

CONSTRUCTION DETAILS

**WILLSON STREET SAFE ROUTES TO
SCHOOL IMPROVEMENTS**

PROJECT NO.	60197.06
DATE	8/18/2020
DRAWING NO.	D-01
SHEET NO.	3 OF 7



MATCHLINE - SHEET PM-02

100% DESIGN SUBMISSION

PROFESSIONAL CERTIFICATION

I HEREBY CERTIFY THAT THESE PLANS WERE PREPARED OR APPROVED BY ME, AND THAT I AM A DULY LICENSED PROFESSIONAL ENGINEER UNDER THE LAWS OF THE STATE OF MASSACHUSETTS, LICENSE NO. 53115
EXPIRATION DATE: 06-30-2020.

REUSE OF DOCUMENTS					
ALL DRAWINGS ARE INSTRUMENTS OF PROFESSIONAL SERVICE FOR THIS PROJECT. REUSE OR ALTERATION IS AT THE USER'S SOLE RISK.					
DSGN	BT				
DR	BT				
CHK	JB				
APVD	MD	NO.	DATE	REVISION	BY APVD

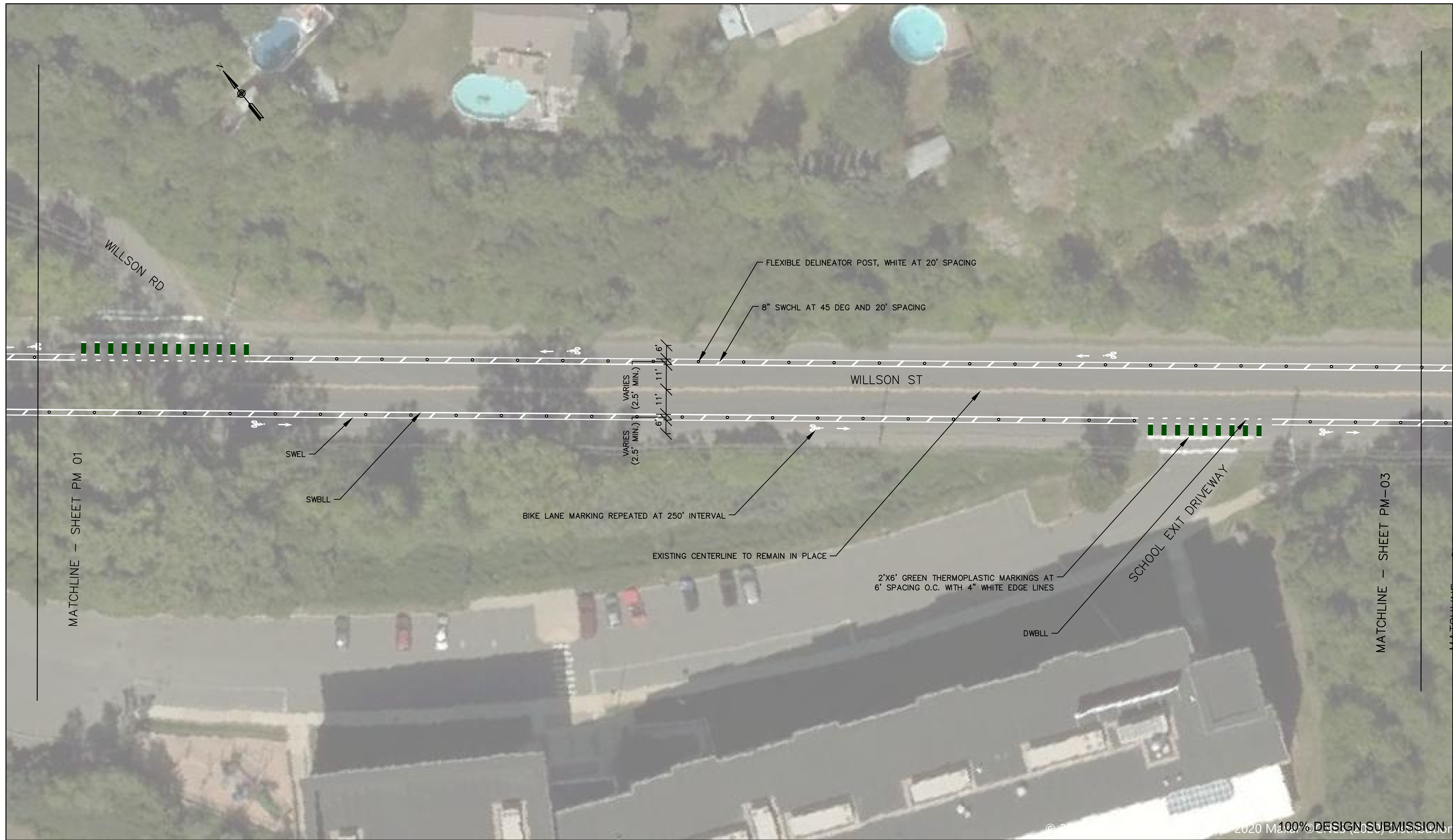
TOOLE DESIGN

2 OLIVER STREET, SUITE 305
BOSTON, MA 02109
PHONE: 617.619.9910
FAX: 301.927.2800
www.tooledesign.com

MASSDOT SHARED STREETS
GRANT PROGRAM
CITY OF SALEM

WILLSON STREET SAFE ROUTES TO SCHOOL IMPROVEMENTS

PROJECT NO.	60197.06
DATE	8/18/2020
DRAWING NO.	PM-01
SHEET NO.	4 OF 7



© 2020 MassDOT. 100% DESIGN SUBMISSION

PROFESSIONAL CERTIFICATION
 I HEREBY CERTIFY THAT THESE PLANS WERE PREPARED OR APPROVED BY ME, AND THAT I AM A DULY LICENSED PROFESSIONAL ENGINEER UNDER THE LAWS OF THE STATE OF MASSACHUSETTS, LICENSE NO. 53115
 EXPIRATION DATE: 06-30-2020.

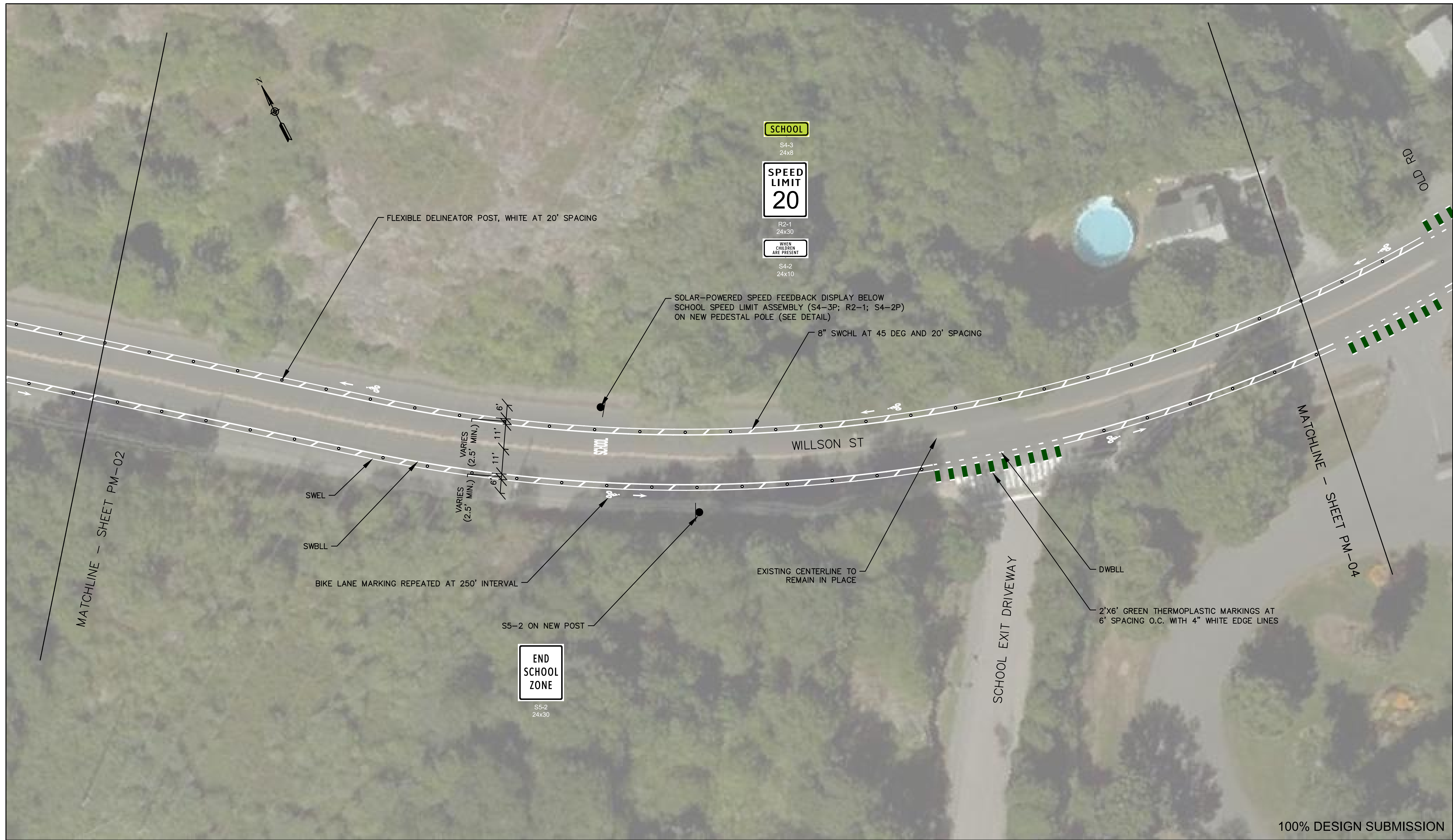
REUSE OF DOCUMENTS					
ALL DRAWINGS ARE INSTRUMENTS OF PROFESSIONAL SERVICE FOR THIS PROJECT. REUSE OR ALTERATION IS AT THE USER'S SOLE RISK.					
DSGN	BT				
DR	BT				
CHK	JB				
APVD	MD	NO.	DATE	REVISION	BY APVD

TOOLE DESIGN
 2 OLIVER STREET, SUITE 305
 BOSTON, MA 02109
 PHONE: 617.619.9910
 FAX: 301.927.2800
 www.tooledesign.com

MASSDOT SHARED STREETS
 GRANT PROGRAM
 CITY OF SALEM

WILLSON STREET SAFE ROUTES TO SCHOOL IMPROVEMENTS

PROJECT NO.	60197.06
DATE	8/18/2020
DRAWING NO.	PM-02
SHEET NO.	5 OF 7



100% DESIGN SUBMISSION

PROFESSIONAL CERTIFICATION

I HEREBY CERTIFY THAT THESE PLANS WERE PREPARED OR APPROVED BY ME, AND THAT I AM A DULY LICENSED PROFESSIONAL ENGINEER UNDER THE LAWS OF THE STATE OF MASSACHUSETTS, LICENSE NO. 53115
EXPIRATION DATE: 06-30-2020.

REUSE OF DOCUMENTS					
ALL DRAWINGS ARE INSTRUMENTS OF PROFESSIONAL SERVICE FOR THIS PROJECT. REUSE OR ALTERATION IS AT THE USER'S SOLE RISK.					
DSGN	BT				
DR	BT				
CHK	JB				
APVD	MD	NO.	DATE	REVISION	BY APVD

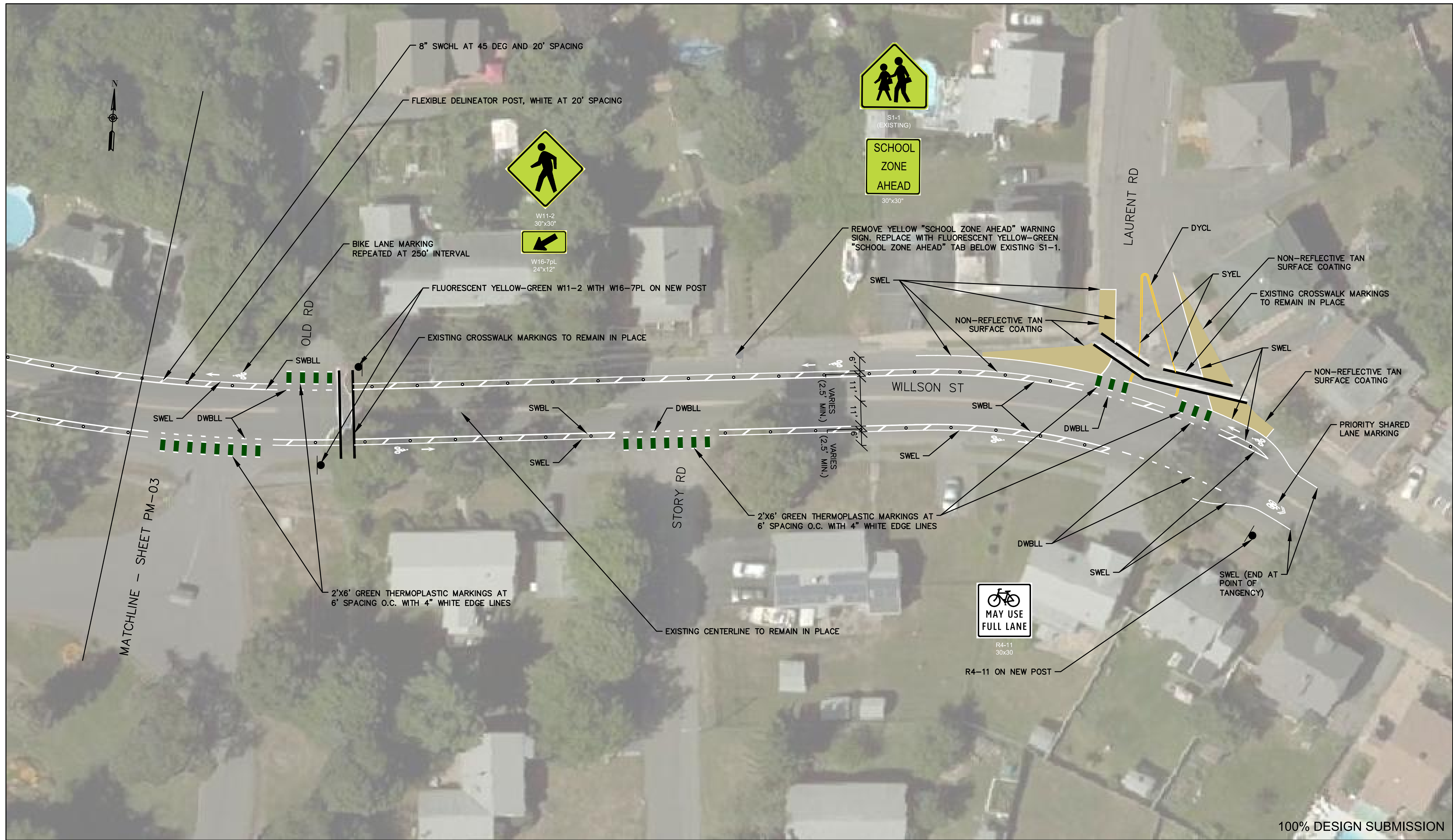
TOOLE DESIGN

2 OLIVER STREET, SUITE 305
BOSTON, MA 02109
PHONE: 617.619.9910
FAX: 301.927.2800
www.tooledesign.com

MASSDOT SHARED STREETS
GRANT PROGRAM
CITY OF SALEM

WILLSON STREET SAFE ROUTES TO SCHOOL IMPROVEMENTS

PROJECT NO.	60197.06
DATE	8/18/2020
DRAWING NO.	PM-03
SHEET NO.	6 OF 7



100% DESIGN SUBMISSION

PROFESSIONAL CERTIFICATION
 I HEREBY CERTIFY THAT THESE PLANS WERE PREPARED OR APPROVED BY ME, AND THAT I AM A DULY LICENSED PROFESSIONAL ENGINEER UNDER THE LAWS OF THE STATE OF MASSACHUSETTS, LICENSE NO. 53115
 EXPIRATION DATE: 06-30-2020.

REUSE OF DOCUMENTS		ALL DRAWINGS ARE INSTRUMENTS OF PROFESSIONAL SERVICE FOR THIS PROJECT. REUSE OR ALTERATION IS AT THE USER'S SOLE RISK.	
DSGN	BT		
DR	BT		
CHK	JB		
APVD	MD	NO.	DATE
		REVISION	BY
			APVD

TOOLE DESIGN
 2 OLIVER STREET, SUITE 305
 BOSTON, MA 02109
 PHONE: 617.619.9910
 FAX: 301.927.2800
 www.tooledesign.com

MASSDOT SHARED STREETS
 GRANT PROGRAM
 CITY OF SALEM

WILLSON STREET SAFE ROUTES TO SCHOOL IMPROVEMENTS

PROJECT NO.	60197.06
DATE	8/18/2020
DRAWING NO.	PM-04
SHEET NO.	7 OF 7